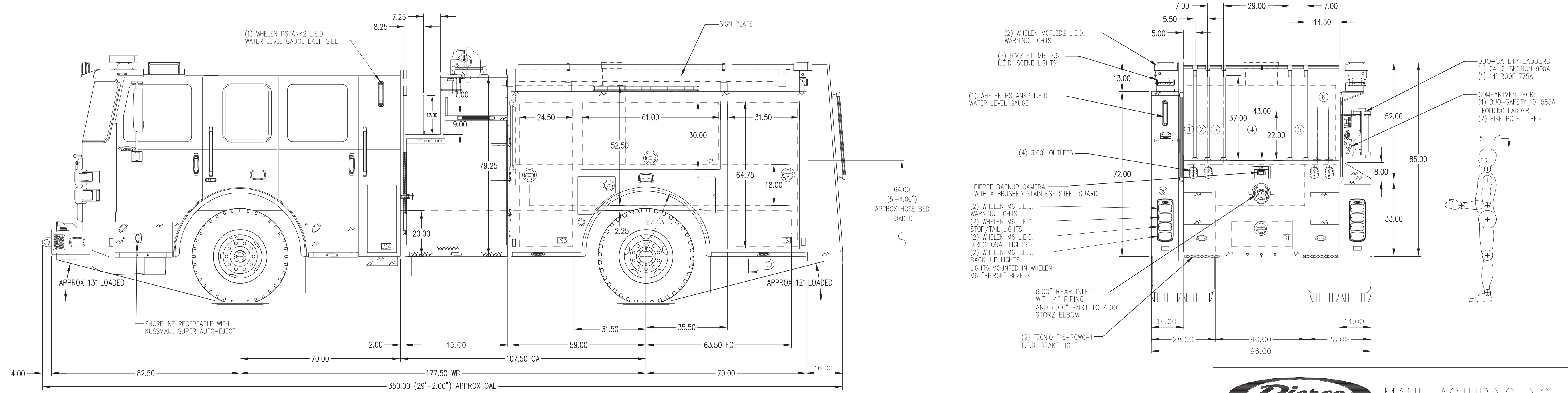


- HOSEBED CAPACITIES**
- ① 300' OF 1.75" SNAP TITE GLADIATOR HOSE SINGLE STACK
 - ② 200' OF 1.75" SNAP TITE GLADIATOR HOSE SINGLE STACK
 - ③ 400' OF 3.00" MERCEDES AQUAFLOW HOSE SINGLE STACK
 - ④ 1000' OF 4.00" MERCEDES MEGAFLOW HOSE
 - ⑤ 250' OF 2.50" SNAP TITE GLADIATOR HOSE SINGLE STACK
 - ⑥ 400' OF 1.75" SNAP TITE GLADIATOR HOSE TRIPLE STACK



ALUMINUM BODY MAXIMUM O.A.H. 10'-0" MAXIMUM O.A.L. 31'-0" SIDE ROLL AND FRONTAL IMPACT PROTECTION

NOTE
DIMENSIONS SHOWN ARE APPROXIMATE AND ARE SUBJECT TO MINOR DEVIATIONS AS MAY OCCUR OR BE NECESSARY IN CONSTRUCTION. MINOR DETAILS NOT SHOWN.

REV	DATE	BY	CH	REV	DATE	BY	CH	ENFORCER	TITLE	FOR	DWG NO.	PROPOSAL	1093
				06APR26	KRG	-		CHASSIS DATA	1500 GPM, 700 GAL WATER TANK	NORRISTOWN FIRE DEPARTMENT		SCALE	DATE
				20MAR26	KRG	-		MAKE	129" PUMPER, HARD WIRED	NORRISTOWN, PA		DRAWN BY	02FEB2026
				04MAR26	KRG	-		PIERCE				CHECKED BY	N/A
				18FEB26	KRG	-		MODEL				SHEET SIZE	SHEET NO.
				16FEB26	KRG	-						D	1 OF 1
PRELIMINARY PRINT ONLY													

Pierce MANUFACTURING INC.

NFPA 1900 (2024) COMPLIANT