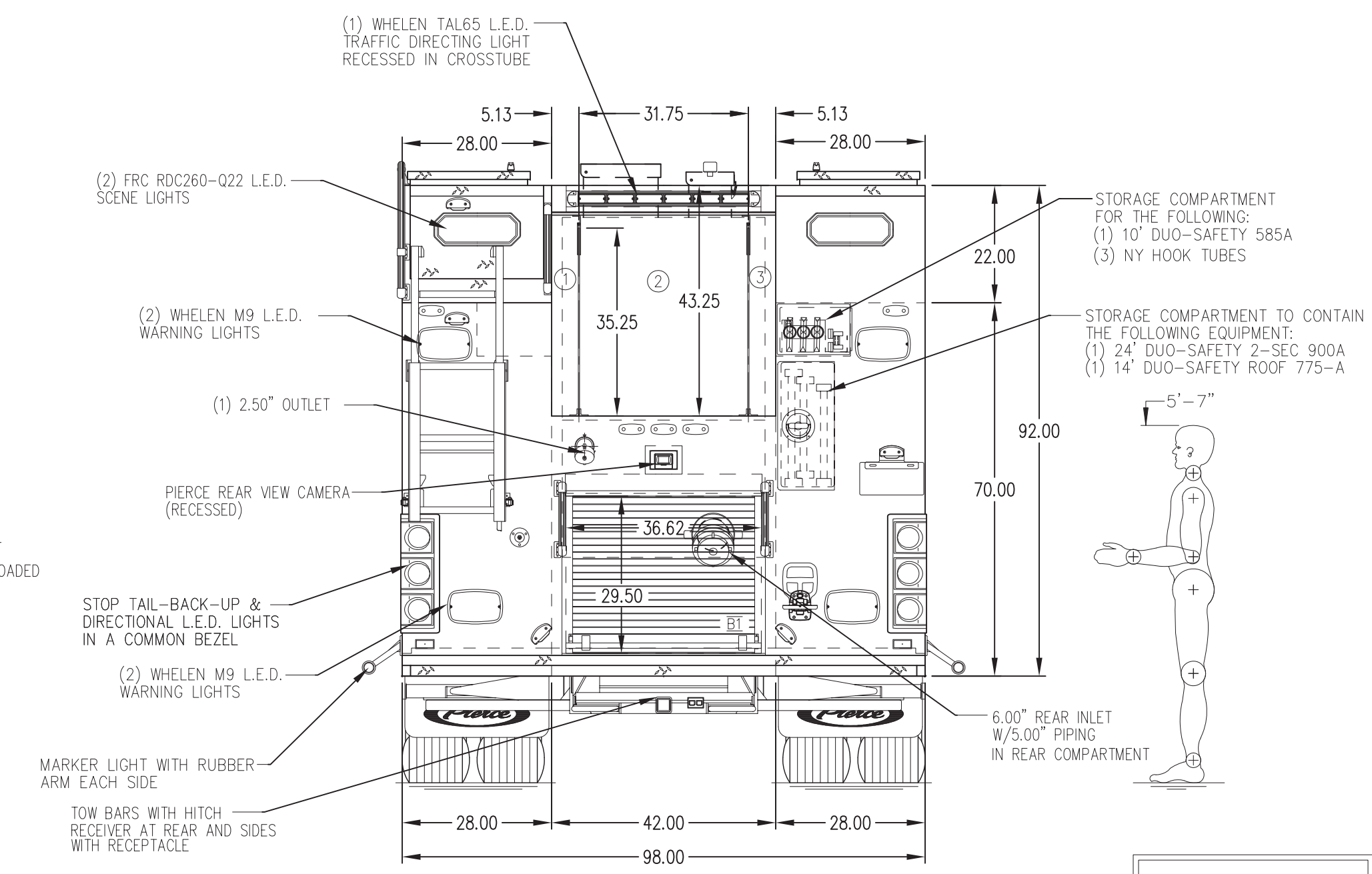
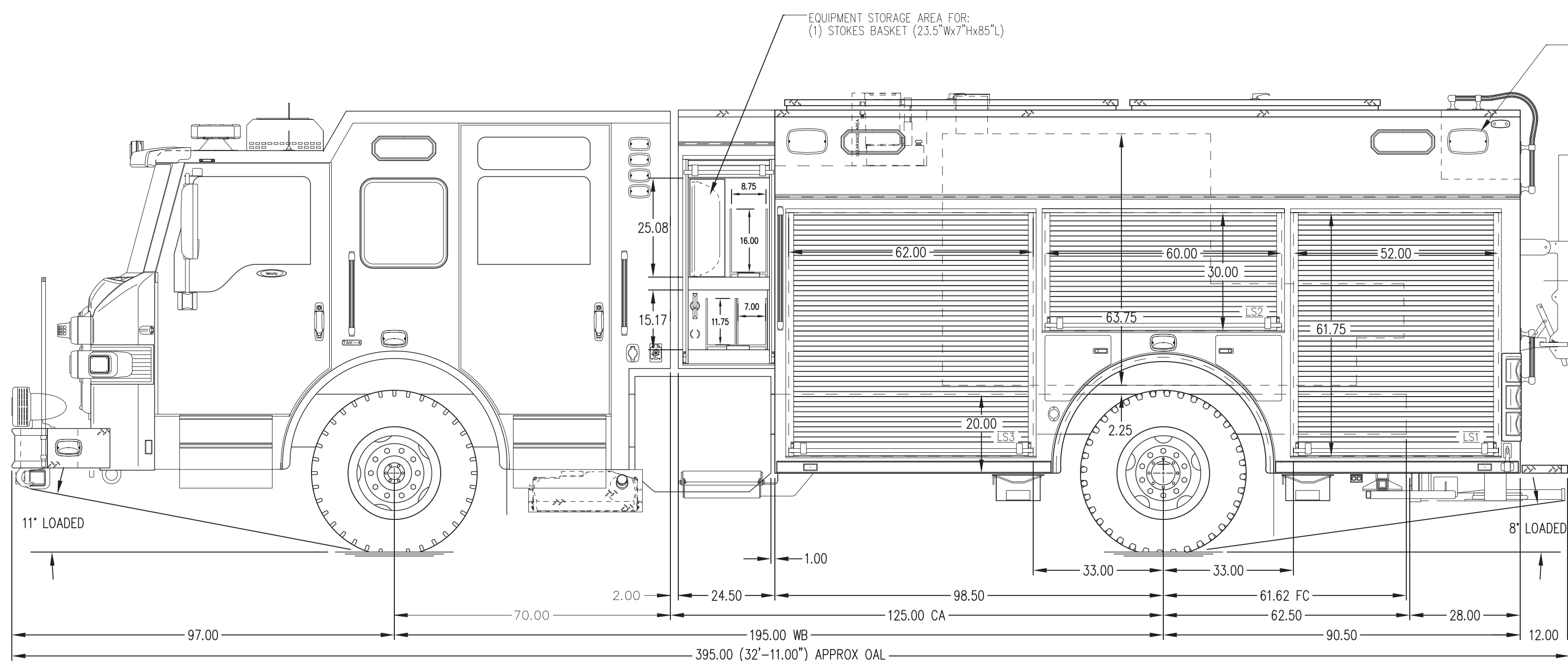


- HOSEBED CAPACITIES
- ① 250' OF 2.50" D.J. HOSE
 - ② 850' OF 5.00" D.J. HOSE
 - ③ 250' OF 2.50" D.J. HOSE



ALUMINUM BODY

SIDE ROLL AND FRONTAL IMPACT PROTECTION

NOTE
DIMENSIONS SHOWN ARE APPROXIMATE AND ARE SUBJECT TO MINOR DEVIATIONS AS MAY OCCUR OR BE NECESSARY IN CONSTRUCTION. MINOR DETAILS NOT SHOWN.

- 1. SHORELINE RECEPTACLE WITH KUSSMAUL SUPER AUTO-EJECT LOCATED ON DRIVER SIDE OF THE CAB
- 2. AIR INLET WITH KUSSMAUL AIR EJECT LOCATED ON DRIVER SIDE OF THE CAB
- 3. BATTERY CHARGER LOCATED PER ORDER
- 4. BATTERY CHARGE INDICATOR LOCATED ON DRIVER SEAT RISER

MAXIMUM O.A.L. 33'-0.00" (396.00")
MAXIMUM O.A.H. 10'-8.00" (128.00")

REV	DATE	BY	CH	VELOCITY
27FEB26	KRG	-	-	-
16FEB26	KRG	-	-	-
13JAN26	KRG	-	-	-
12JAN26	KRG	-	-	CHASSIS DATA
06JAN26	KRG	-	-	MAKE
02JAN26	KRG	-	-	PIERCE
18DEC25	KRG	-	-	MODEL
17DEC25	KRG	-	-	VELOCITY

		PROPOSAL	843
		SCALE	DATE
TITLE	2000 GPM, 770G TANK, 750G WATER, 20G FOAM 189" PUC PUMPER, MUX	DRAWN BY	KRG
FOR	CANONSBURG VOLUNTEER FIRE DEPARTMENT CANONSBURG, PA	CHECKED BY	N/A
DWG NO.	PRELIMINARY PRINT ONLY	SHEET SIZE	D
		SHEET NO.	1 OF 1

NFPA 1900 (2024) COMPLIANT