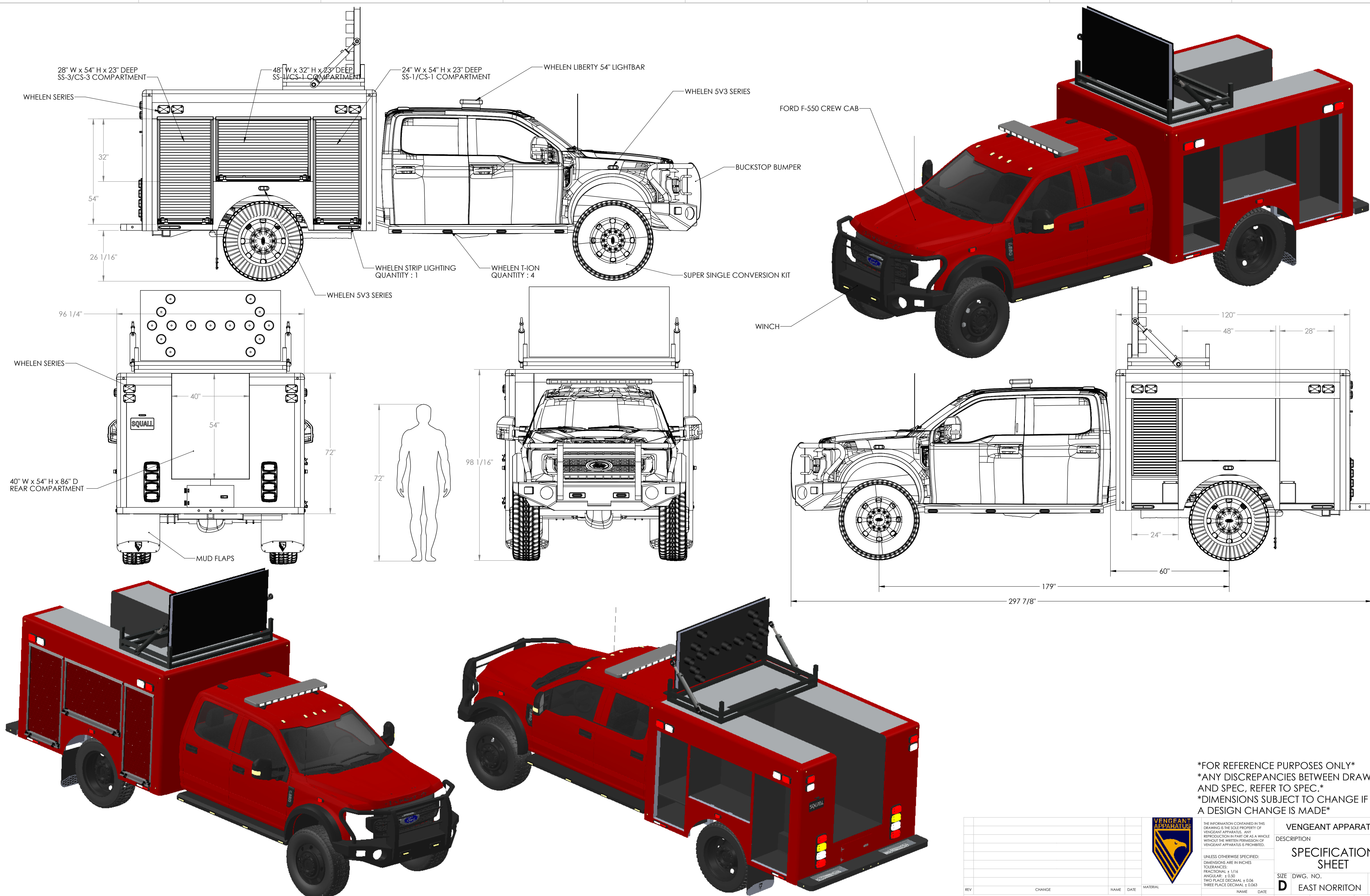


8 7 6 5 4 3 2 1



28" W x 54" H x 23" DEEP SS-3/CS-3 COMPARTMENT
 48" W x 32" H x 23" DEEP SS-1/CS-1 COMPARTMENT
 24" W x 54" H x 23" DEEP SS-1/CS-1 COMPARTMENT
 WHELEN LIBERTY 54" LIGHTBAR
 WHELEN 5V3 SERIES
 FORD F-550 CREW CAB
 BUCKSTOP BUMPER
 WHELEN STRIP LIGHTING QUANTITY : 1
 WHELEN T-ION QUANTITY : 4
 SUPER SINGLE CONVERSION KIT

32"
 54"
 26 1/16"
 96 1/4"
 40"
 54"
 72"
 40" W x 54" H x 86" D REAR COMPARTMENT
 MUD FLAPS

WHELEN 5V3 SERIES
 98 1/16"
 72"

WINCH
 120"
 48"
 28"
 24"
 60"
 179"
 297 7/8"

FOR REFERENCE PURPOSES ONLY
 ANY DISCREPANCIES BETWEEN DRAWING AND SPEC, REFER TO SPEC.
 DIMENSIONS SUBJECT TO CHANGE IF A DESIGN CHANGE IS MADE

VENGEANT APPARATUS		DESCRIPTION	
SPECIFICATION SHEET		REV A	
SIZE	DWG. NO.	REV	
D	EAST NORRITON	A	
DO NOT SCALE DRAWING		SCALE: 1:22 WEIGHT: SHEET 1 OF 1	

8 7 6 5 4 3 2 1