



Laurel FC
Job #44994

THIS REPORT CONTAINS PHOTOS OF:

- The painted body.
- The chassis on line with the engine installed.



GLICK
FIRE EQUIPMENT COMPANY, INC.

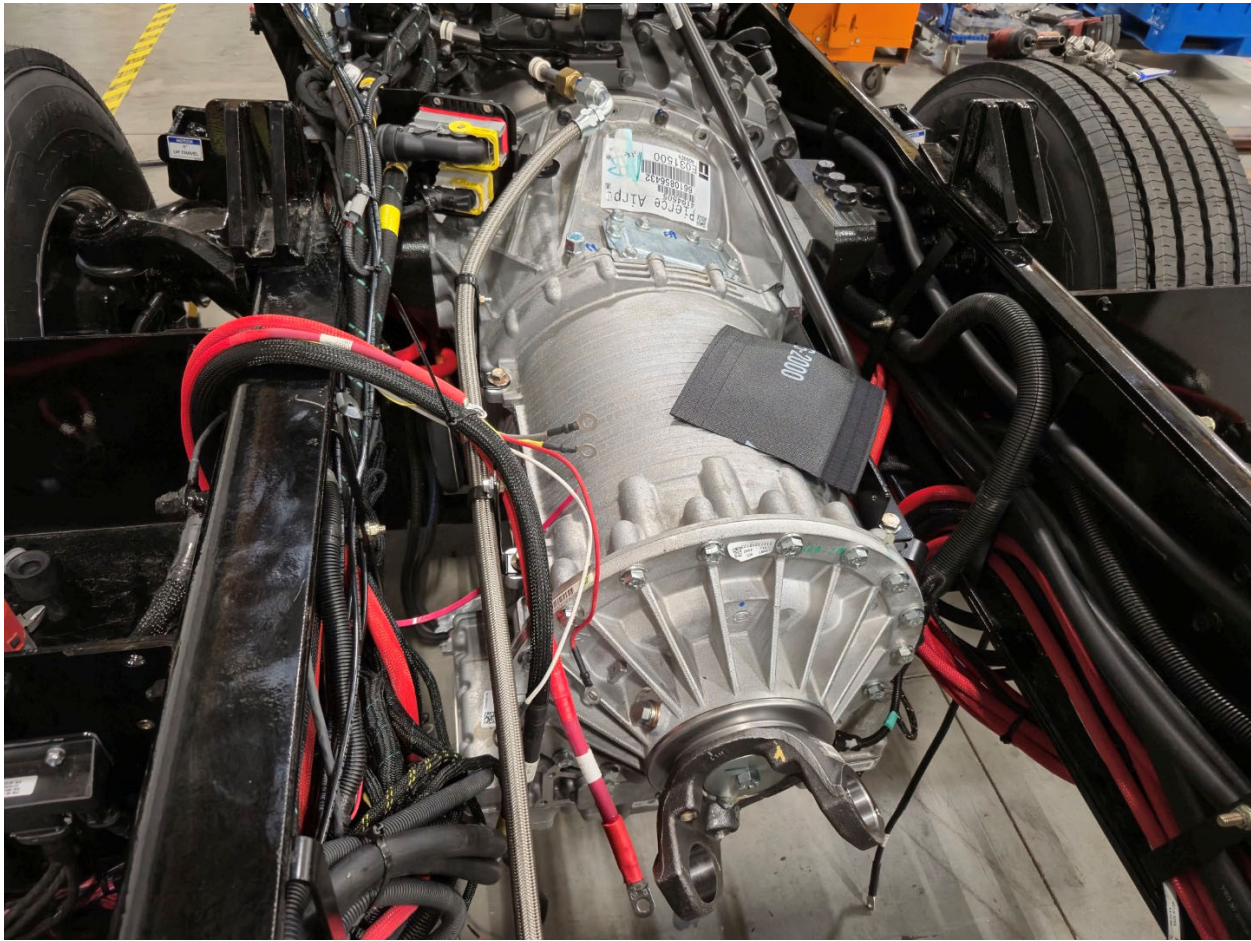


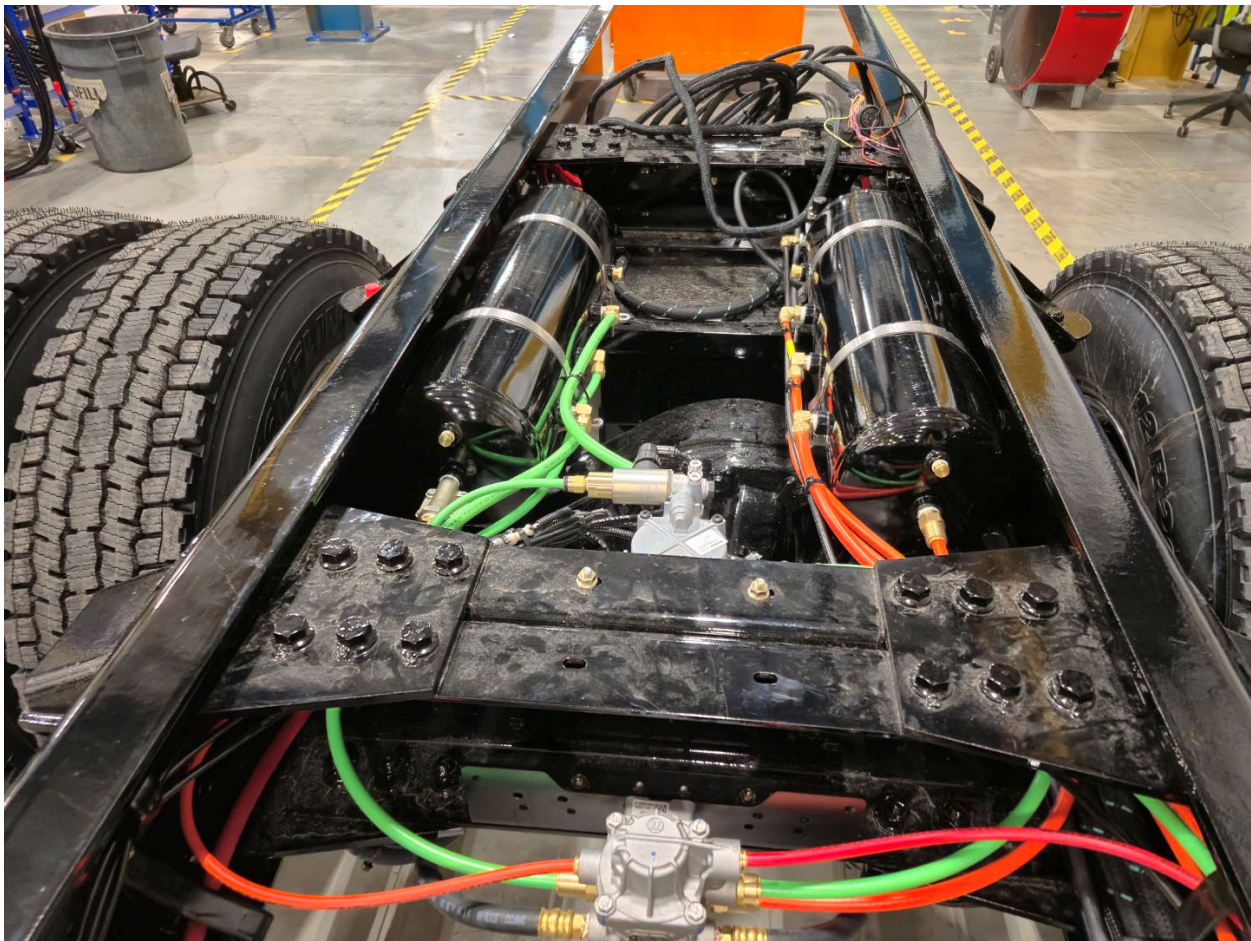
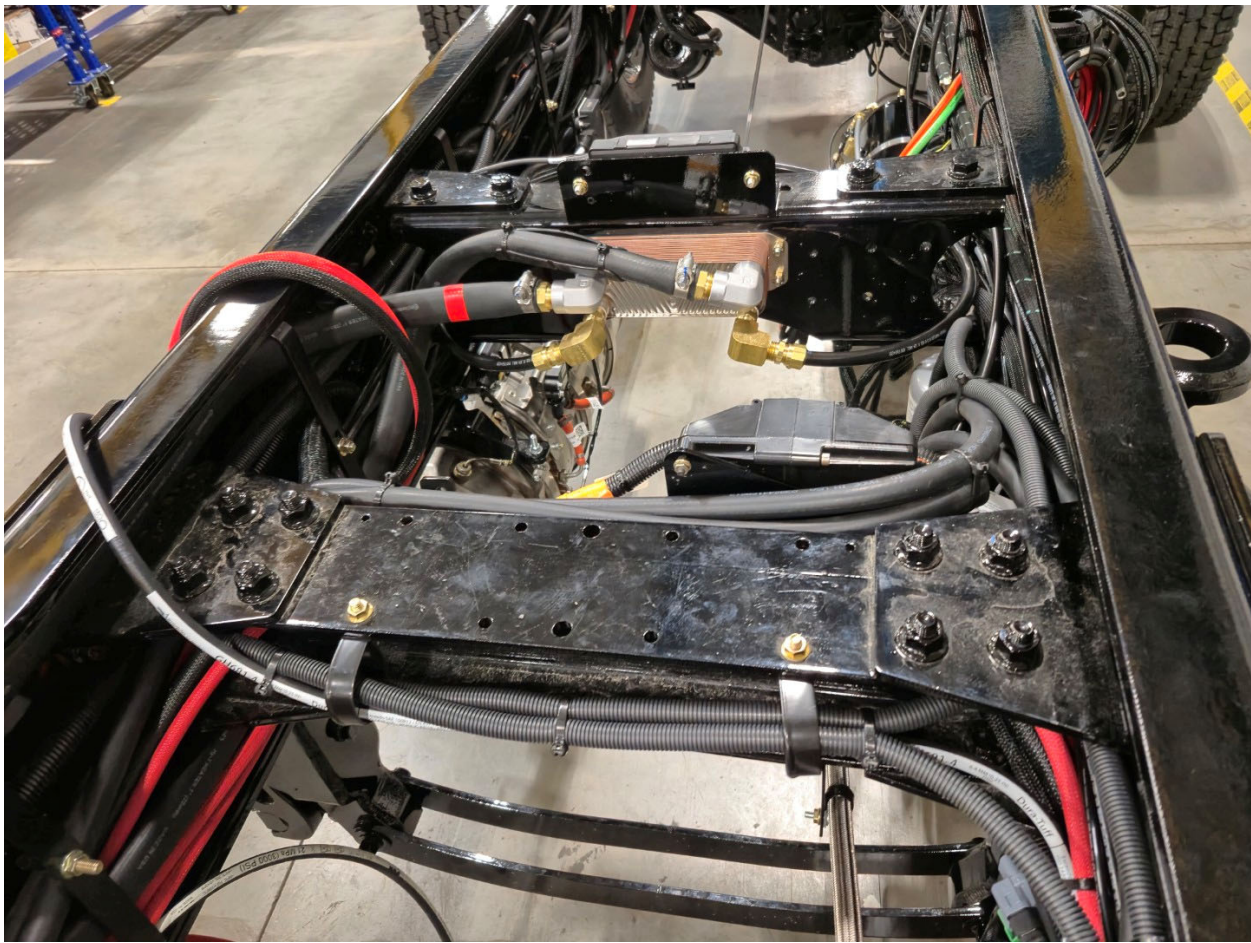


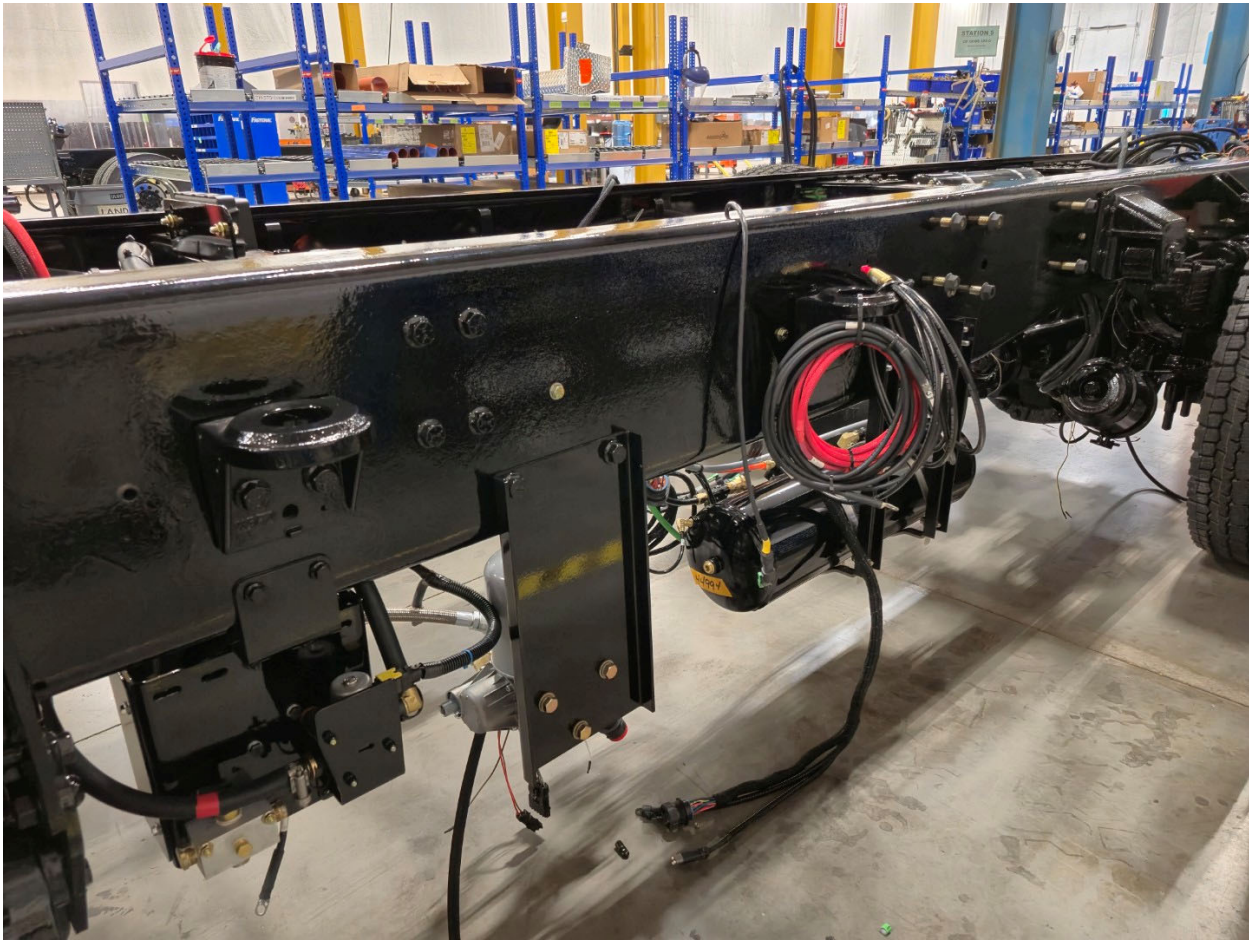
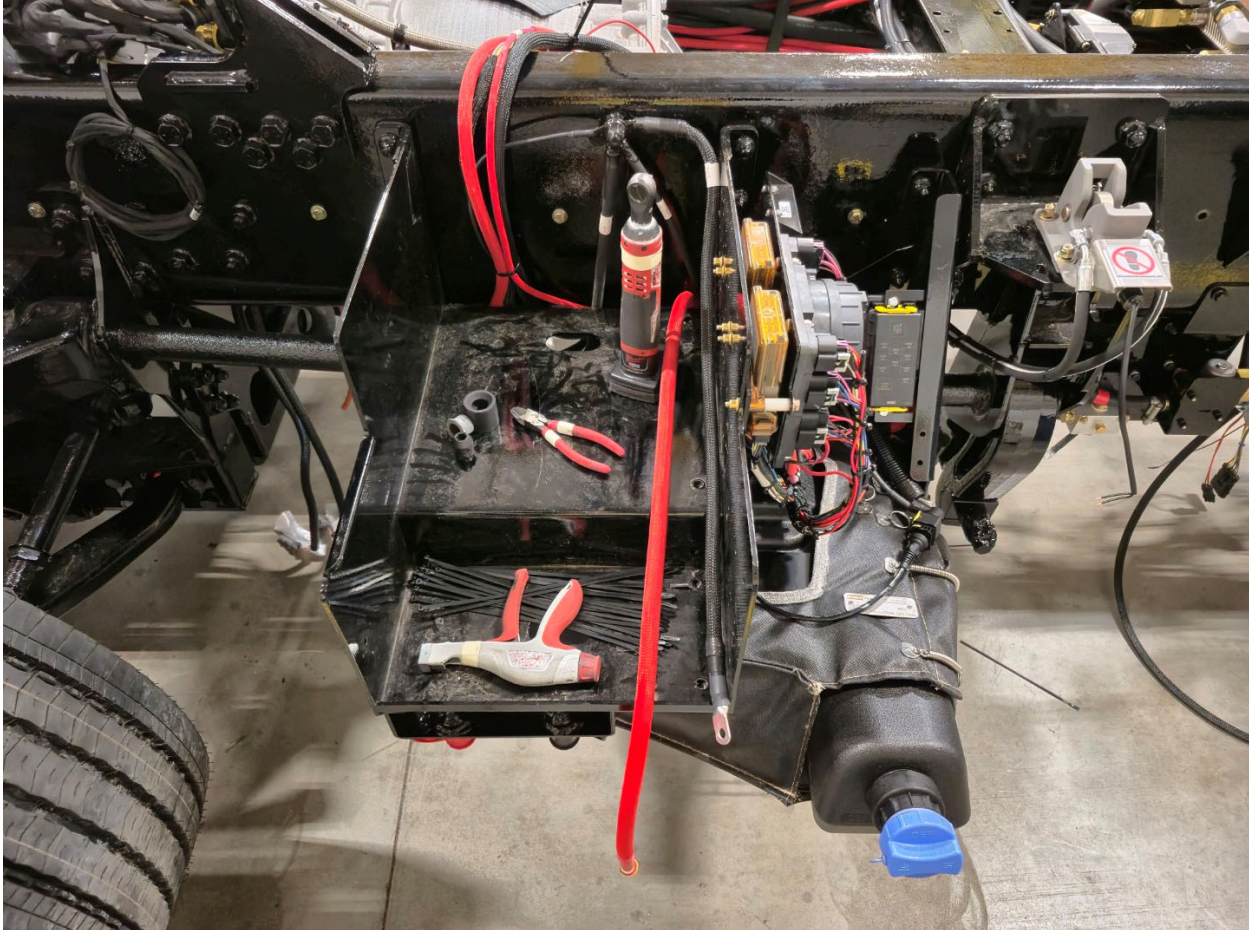






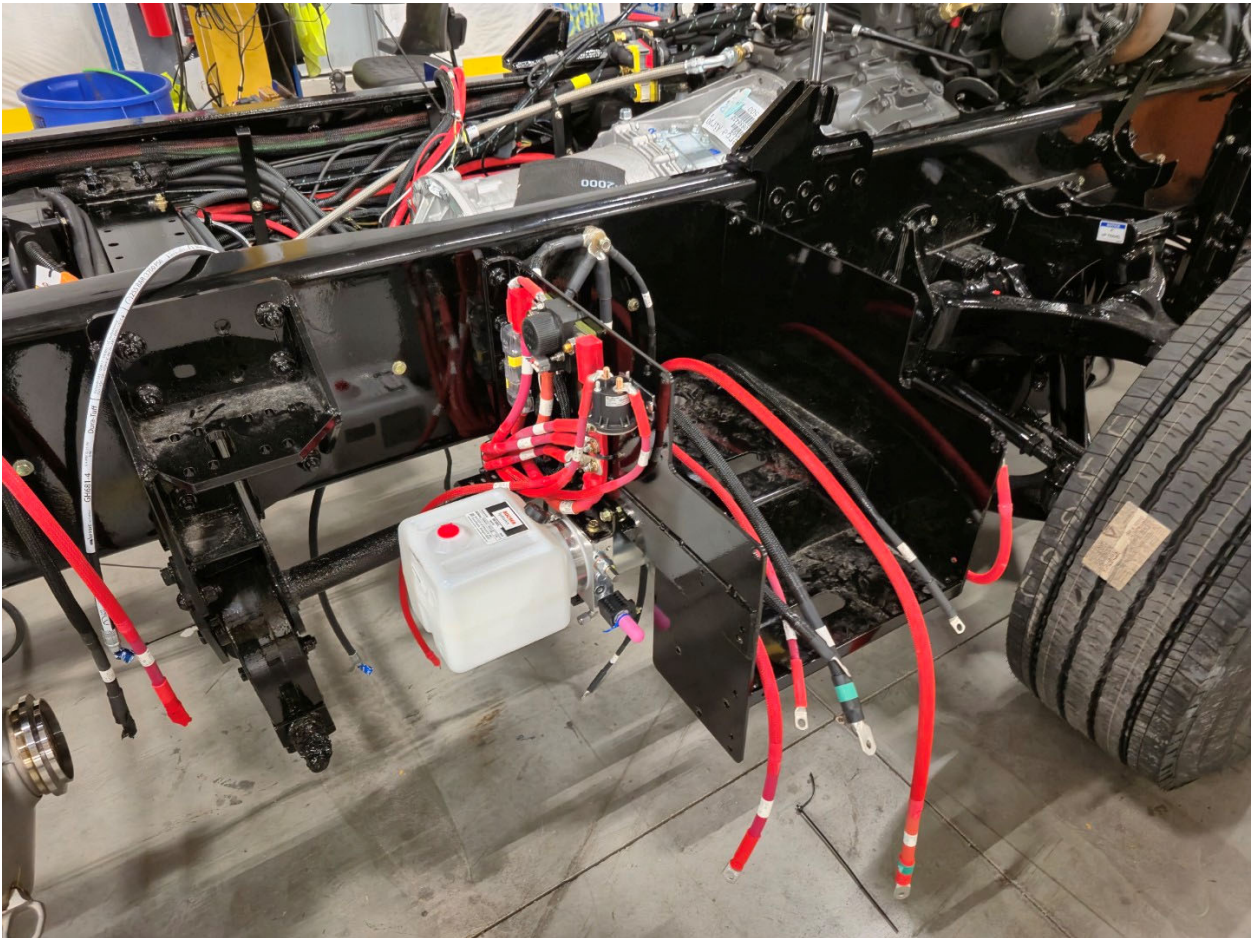


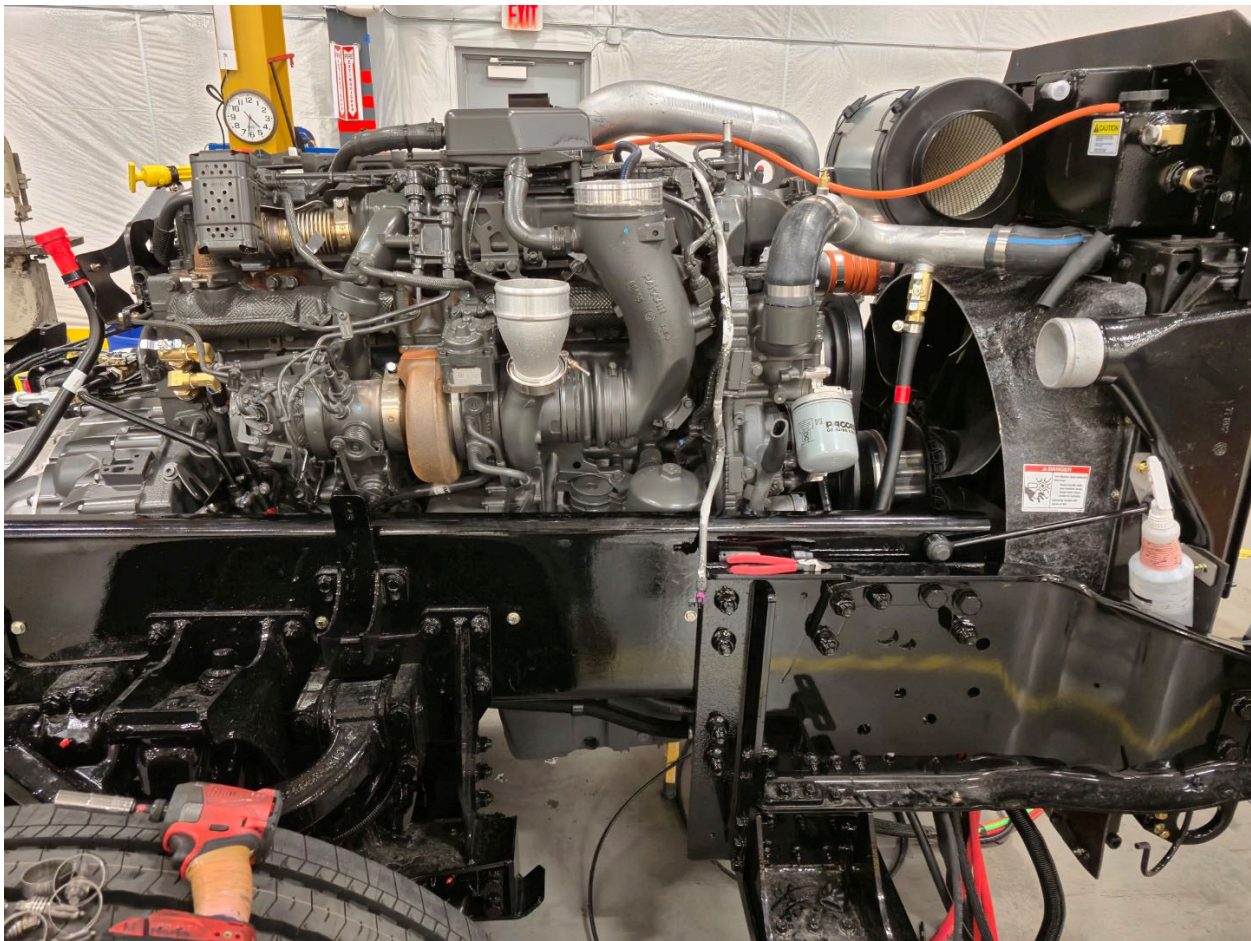


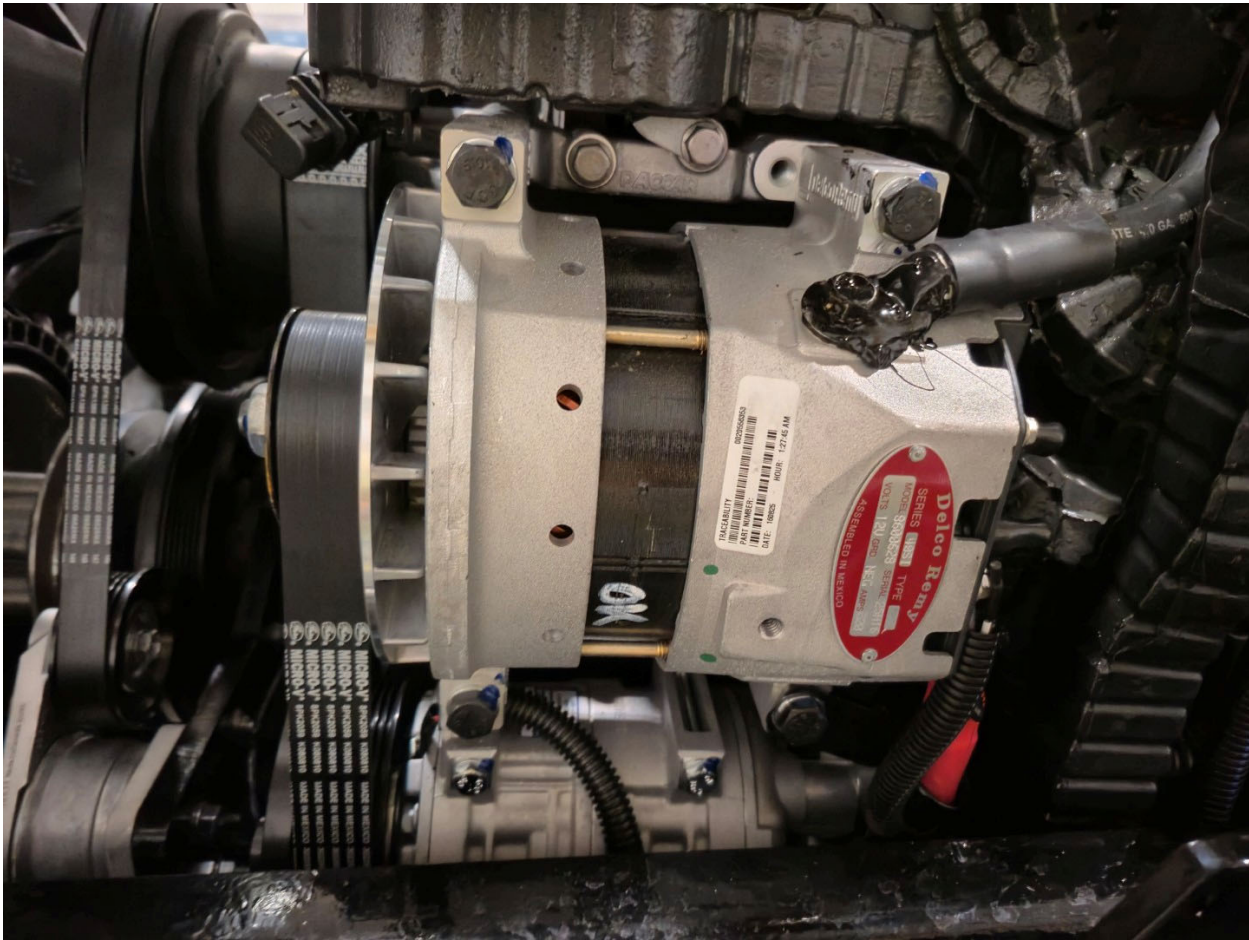


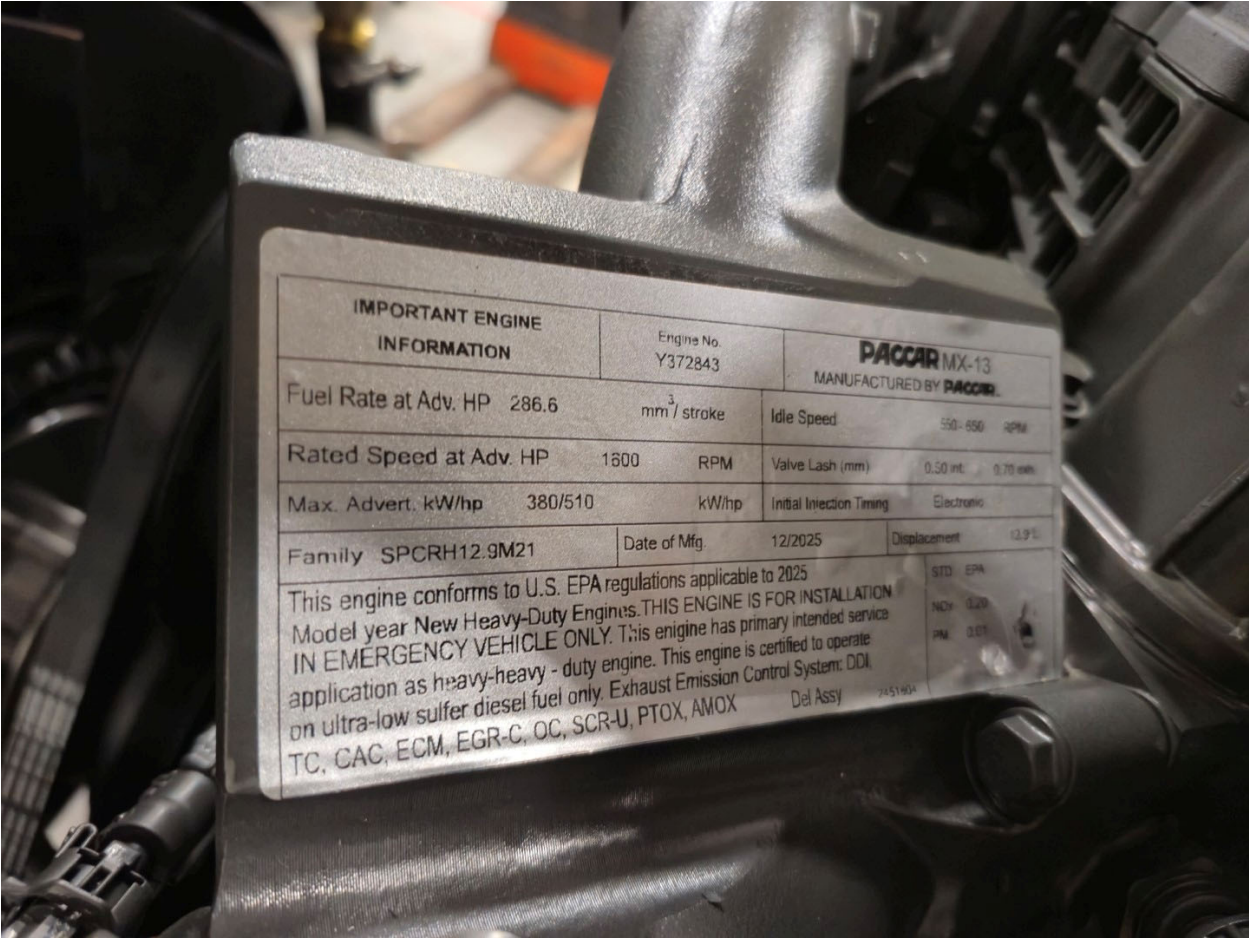












IMPORTANT ENGINE INFORMATION		Engine No. Y372843	PACCAR MX-13 MANUFACTURED BY PACCAR		
Fuel Rate at Adv. HP	286.6	mm ³ / stroke	Idle Speed	550-650 RPM	
Rated Speed at Adv. HP	1600	RPM	Valve Lash (mm)	0.50 int. 0.70 exh.	
Max. Advert. kW/hp	380/510	kW/hp	Initial Injection Timing	Electronic	
Family	SPCRH12.9M21	Date of Mfg.	12/2025	Displacement	12.9 L
<p>This engine conforms to U.S. EPA regulations applicable to 2025 Model year New Heavy-Duty Engines. THIS ENGINE IS FOR INSTALLATION IN EMERGENCY VEHICLE ONLY. This engine has primary intended service application as heavy-heavy - duty engine. This engine is certified to operate on ultra-low sulfur diesel fuel only. Exhaust Emission Control System: DDI, TC, CAC, ECM, EGR-C, OC, SCR-U, PTOX, AMOX</p>				STD: EPA NOx: 0.20 PM: 0.01	
				Del Assy	2451404