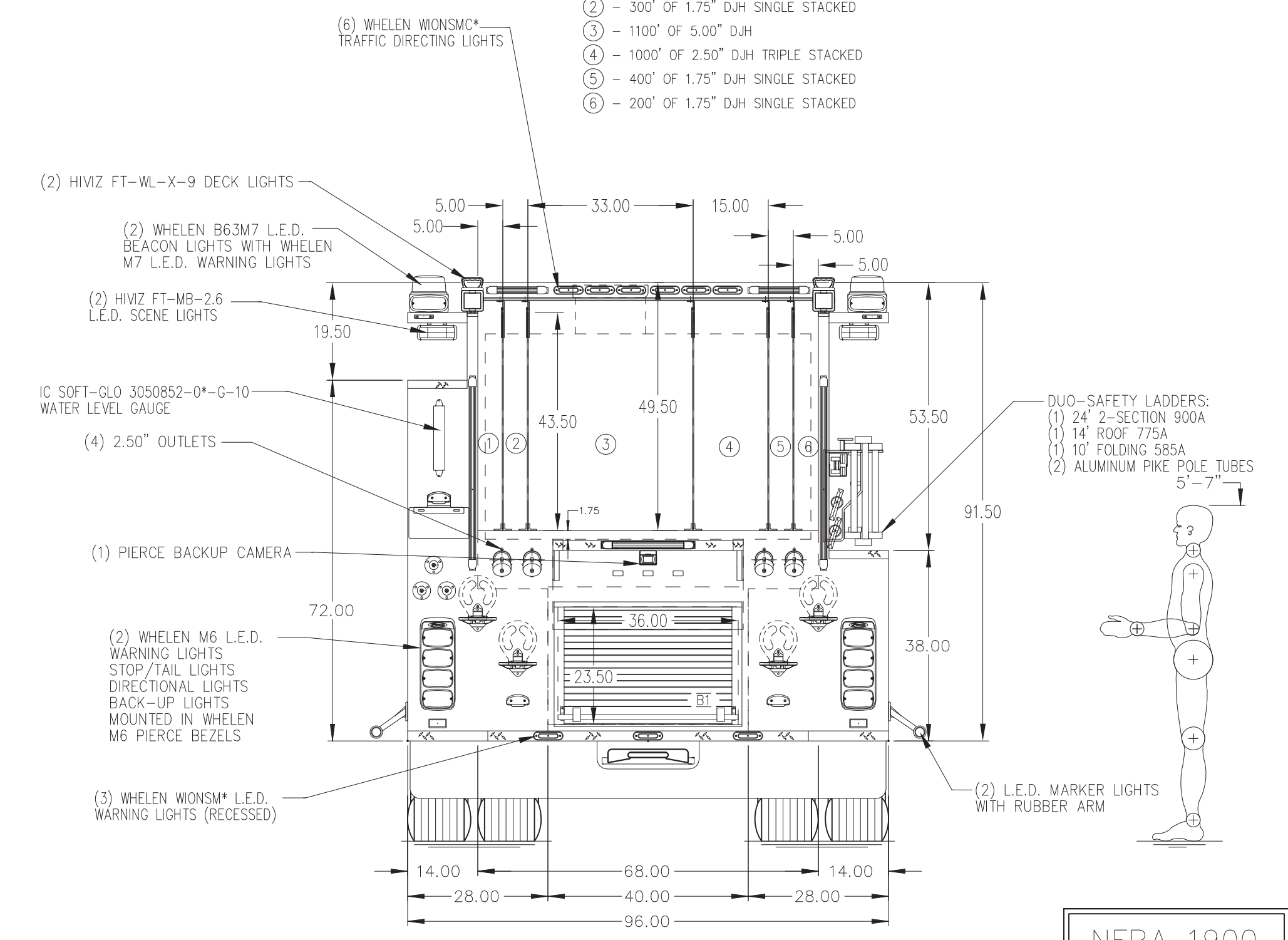
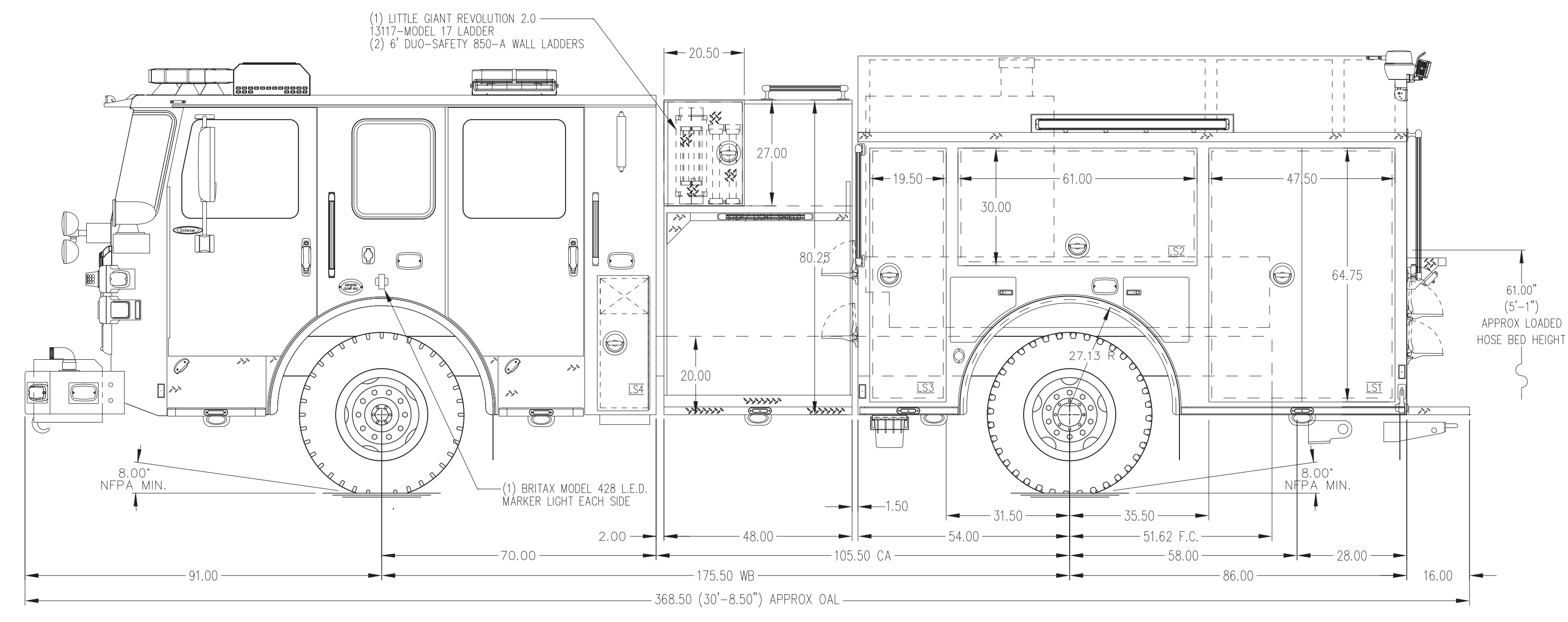


- HOSEBED CAPACITIES
- ① - 200' OF 1.75" D.J.H SINGLE STACKED
 - ② - 300' OF 1.75" D.J.H SINGLE STACKED
 - ③ - 1100' OF 5.00" D.J.H
 - ④ - 1000' OF 2.50" D.J.H TRIPLE STACKED
 - ⑤ - 400' OF 1.75" D.J.H SINGLE STACKED
 - ⑥ - 200' OF 1.75" D.J.H SINGLE STACKED



ALUMINUM BODY

NOTE
 DIMENSIONS SHOWN ARE APPROXIMATE AND ARE SUBJECT TO MINOR DEVIATIONS AS MAY OCCUR OR BE NECESSARY IN CONSTRUCTION. MINOR DETAILS NOT SHOWN.

- 1. SHORELINE RECEPTACLE WITH KUSSMAUL SUPER AUTO-EJECT LOCATED ON DRIVER SIDE OF THE CAB
- 2. BATTERY CHARGER LOCATED PER ORDER
- 3. BATTERY CHARGE INDICATOR LOCATED ON DRIVER SEAT RISER

REV	DATE	BY	CH	ENFORCER
25FEB25	KRG	-	-	-
06FEB25	KRG	-	-	-
09JAN25	KRG	-	-	CHASSIS DATA
28MAY24	KRG	-	-	MAKE
20MAY24	KRG	-	-	PIERCE
08MAY24	KRG	-	-	MODEL
02MAY24	KRG	-	-	ENFORCER

Pierce MANUFACTURING INC.

TITLE: 2000-D-750 GALLON WATER TANK, 140" PUMPER BODY DELUGE, BOOSTER REEL, LADDERS ON LOW SIDE

FOR: MARSHALL TOWNSHIP VOLUNTEER FIRE DEPARTMENT WARRENDALE, PA

DWG NO.: PRELIMINARY PRINT ONLY

PROPOSAL	860
SCALE	DATE
1:24	
DRAWN BY	30APR2024
KRG	
CHECKED BY	N/A
N/A	N/A
SHEET SIZE	SHEET NO.
D	1 OF 1

NFPA 1900 (2024) COMPLIANT