

**GREASE GRITS:**  
**Aftermarket and Customer Service**

**DEPARTMENT SPOTLIGHT!**  
**Fabrication**

# **GLICK** **at a GLANCE**

Summer/Fall 2025  
VOL. 32/ISSUE 2



**INSIDE:**

EMS News • Vengeant Demo Available • Firehouse Grub • GLICK Sponsored Events • Fire Expo Pics  
Employee News • Department Spotlight • New Sales • Recent Deliveries • Pierce Road Rally Wrap-up



## Letter from the President &amp; Guests

*Surround yourself with people who fight for you,  
in the rooms you aren't in.*

This issue, we hear from  
Co-Owner and President Amy Sweitzer.

Spring and summer brought a fresh dose of energy and plenty of opportunities to connect. Between regional shows, training events, travel with customers, the recent Pierce Road Rally, and simple chats at the facilities, we've enjoyed seeing so many of you in person these past few months.

Your input continues to shape our direction and decisions, from improving our website to growing support divisions that better serve your needs. Some of those divisions are highlighted in this issue of the newsletter and others have starred in preview newsletters. If you missed a few, now is a great time to catch up. Find them on our new website at [glickfire.com/newsletter](http://glickfire.com/newsletter). If you have questions about a specific feature or division, reach out to me or any of our managers – we'd be glad to discuss your needs and how best to align with you in the future.

While I have your attention, let's discuss these **GLICK** Fire newsletters. We've been composing and sending quarterly newsletters for many, many years but have failed to ask what topics YOU want to read, hear and learn about. Here's your chance to let us know what you like, (or where we've missed the mark), and suggest future topics! While you're at it, we'd also love to hear who you'd like to see featured as a guest contributor. You can let us know by text, in person, by email, or take the easy route and visit [glickfire.com/topics](http://glickfire.com/topics).

Help us by sharing topics you actually want to read, instead of reading a future how-to article on polishing diamond-plate with a toothbrush."



As we begin closing out the summer, I'd like to take a moment and focus on **GLICK** Fire values. You may be wondering "how does this affect me?" but I'd like to make a case that it does in many circumstances.

Since 2022, in each newsletter, Jodi and I have tried to spotlight one of **GLICK's** core values. After the past few months of travel and connections, Teamwork stands out. The collaboration between our team, our partners, and all of you has been exceptional. Working together as a team, whether internally with employees or externally with you, to accomplish a common goal, is a benefit to all involved. Thank you for your partnership, your feedback, and your continued trust.

Be safe and be kind.



## GET SOCIAL WITH US!



/GlickFireEquipment



/glickfire



@glickfire



@glickfire



/glickfire

# Welcome to our New Employees!

## AUSTIN BELMONT

**Service Tech Apprentice (PT) • Harleysville**

Austin completed his second year of high school at Western Montgomery Career and Technology Center in the Diesel Technology class. He is a Junior Firefighter at Pennsburg Fire Company, where he has volunteered for the last two years, following in his dad's footsteps, who is currently the Chief. In his free time, you can find Austin fishing with friends.



## FRANK BIALKO

**Service Technician • Washington County**

Frank is an Army veteran and graduate of Rosedale Technical Institute. He started his diesel mechanic career while serving in the Army and joins GLICK Fire with more than 20 years of experience.



## DAVE HECKERT

**Apparatus Orientation • Central PA Region**

Dave currently resides with his wife of 26 years and their three dogs in the Mechanicsburg area, where he was born and raised. He served in the United States Coast Guard. He joins GLICK Fire after retiring from Montgomery County Maryland Fire & Rescue after 20 years as a paid firefighter, and has also volunteered with Monroe Fire Company in Cumberland County for 40 years.



## TJ HUERBIN

**Service Tech Apprentice • Zelienople**

TJ has lived in Valencia, PA his entire life and currently resides there with his wife and 2 dogs. TJ has been a volunteer firefighter for 7 years with Middlesex Township Volunteer Fire Company.



## MADDY ROHRER

**Marketing • Bird In Hand**

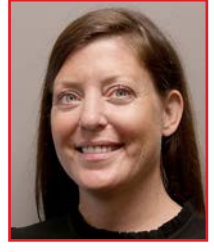
Maddy has lived in Lancaster County her entire life, specifically East Petersburg. She attended Millersville University, and joins GLICK Fire with experience in nonprofit and emergency service marketing. Maddy has been a Support Member of East Petersburg Fire Company for 10 years. She enjoys collecting glass Christmas ornaments, photography, exploring new places, listening to music, and attending concerts.



## MELISSA SHULTZ

**HR • Bird In Hand**

Melissa was born in Lancaster, PA and graduated from McCaskey High School with her twin brother. She has enjoyed traveling for work and lived in New York City for a period of time. In her free time Melissa enjoys going hiking, cooking or trying new restaurants, traveling, and spending time at home laughing at her two cats, Millie and Roamie.



## NATE STEELE

**Mobile Service Tech • Zelienople**

Nate recently rejoined the GLICK team. He has lived in Cranberry Township his entire life and currently resides there with his wife, daughter, and 3 dogs. In his free time, Nate enjoys riding dirt bikes and playing ice hockey.



## Congratulations! Employee Years of Service ...



**Hank Boyer**

Service Writer  
Bird In Hand



**Ray Robinson**

Service Tech  
Zelienople



**Chris Imms**

Parts Dept.  
Harleysville



**Heidi Rosenberger**

Service Writer  
Harleysville



**Matt Wiedenhaefer**

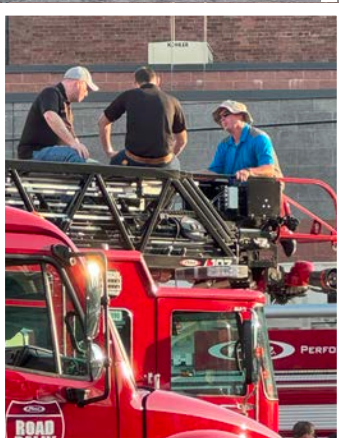
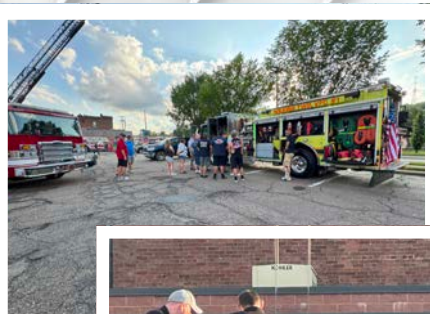
Fire Sale Account Manager  
SE Pennsylvania





## *The Pierce Road Rally visited Pennsylvania in July!*

Thank you to Carnegie Volunteer Fire Dept. and New Kingstown Fire Company for hosting and accommodating the guests and Pierce crew. We sincerely appreciate everyone who was able to join us!





**FIRE EXPO 2025**

Thank you for making Fire Expo 2025, held in May at the PA Farm Show Complex and Expo Center in Harrisburg PA, a successful event! We were thrilled to see so many familiar faces. Our booth was a constant flow of people, allowing us to meet many new people and make worthwhile connections. We hope you were able to visit us... maybe you will see your picture here!







## PIERCE AFTERMARKET SUPPORT =



SUPERIOR  
CUSTOMER  
SERVICE

As fire departments invest in increasingly sophisticated vehicles, the importance of robust customer support and comprehensive aftermarket services has never been more critical. While finding the right type of apparatus to fit the needs of the community is essential, not all manufacturers deliver the same level of aftermarket support.



### Comprehensive Service & Support Network

Pierce offers the largest support network in the industry, adding value to the full lifetime of an apparatus.

If a fire truck repair or service issue arises, dealers are the first line of local support. **GLICK** provides service with our Emergency Vehicle Technician (EVT) and Pierce Master Technician-Certified mechanics, backed by a robust parts department and online support from [pierceparts.com](http://pierceparts.com).

### 24/7 Technical Assistance

**GLICK** technicians have direct access to Pierce's Technical Support Call Center, staffed by master technicians who resolve most issues quickly. For complex cases, Pierce Field Service engineers collaborate with Product Engineers to ensure solutions.



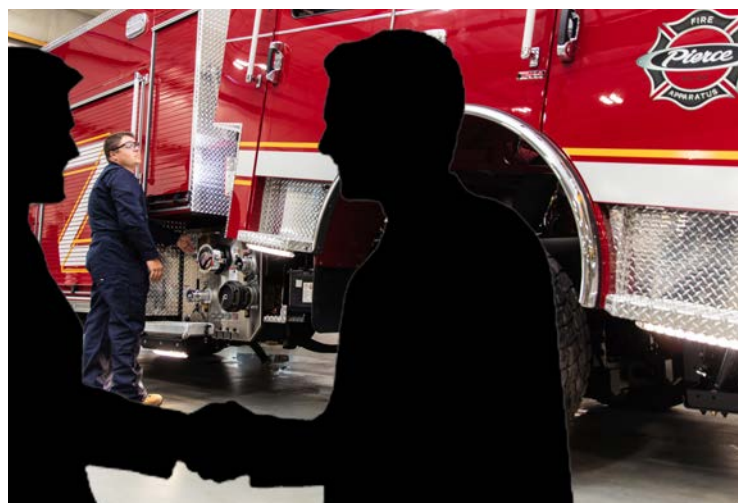
### Mobile Service Vehicles

With a fleet of strategically located mobile service vehicles across Pennsylvania, our team brings certified service directly to your department, reducing downtime and getting trucks back in service quicker.

### Ongoing Training & Resources

Pierce offers manufacturer-direct training, with Subject Matter Experts (SMEs) delivering the most current information with hands-on training classes.

Keeping the team equipped with the most current information and training is key to getting our customers the best possible solution to any issue that may arise. Our service department conducts annual vendor and manufacturer training throughout the year.



### More Than a Sale — A Commitment

Exceptional customer service extends beyond the initial sale, and Pierce is committed to supporting its dealerships and customers.

If your apparatus needs service, parts, or technical issues diagnosed, you can contact our knowledgeable staff!

Email us at [service@glickfire.com](mailto:service@glickfire.com).



# DEPARTMENT SPOTLIGHT

## Fabrication



**GLICK** has dedicated full-service fabrication shops at our Lancaster County, Montgomery County, and Butler County facilities. Our knowledgeable, full-time fabrication technicians will help you custom-figure your fire truck or ambulance.

Our facilities are fully equipped and our team of six dedicated employees is trained to deliver exceptional results.

We have field-certified welders qualified to work on Pierce® Ascendant® aerials, as well as certified welders in steel and aluminum.

Along with minor accident repairs, moderate refurbishment, upfit and lighting upgrades, we offer:

- True custom tool mountings
- Fixed shelves, roll-out tool boards and shelves, swing-out tool boards, and roll-out-tilt-down shelves built to your specifications.
- Custom trays, bins, toolboxes, brackets, straps, racks, etc.
- All mounts can be painted to match the cab or compartment color
- Fabricated poly boxes and trays
- Plasma Cutting
- Threading and grooving stainless steel pipe

Our technicians are trained to use brakes, shears, welders, torches, plasma cutters, and more!

### ALL MAKES AND MODELS

**GLICK's** fabrication services are available on all makes and models of fire apparatus and ambulances.

Contact us today to discuss how we can help eliminate problems and make every emergency call more efficient with a custom-fabricated apparatus.

**Get a free quote today!**

**Call 717-299-4120, or email [service@gllickfire.com](mailto:service@gllickfire.com)**



**Tim Cox**  
Lancaster County



**Emily Govan**  
Butler County



**Chase Fahnestock**  
Lancaster County



**Kelly Moyer**  
Montgomery County



**Dave Petrofske**  
Lancaster County



**Doug Pickett**  
Butler County



[www.GlickFire.com/fabrication](http://www.GlickFire.com/fabrication)



**CHIEF XL  
TYPE I**



**EXPRESS PLUS TYPE I**



**CCL150  
TYPE III**

**CRESTLINE®**



**Get the Details at  
[GlickFire.com/stock-ambulances](https://GlickFire.com/stock-ambulances)**



*Actual units may differ from those shown.*

**NEW  
PRODUCTS!**



**EMSWORLD  
EXPO**  
In Partnership With  
**NAEMT**

October 20-24, 2025

**New Products are being unveiled by Crestline and Demers in October at EMS World!  
Stay tuned for these exciting innovations!**





**VENGEANT  
APPARATUS**

# **HALO Utility Vehicle**

## **Glick Stock Unit**

**AVAILABLE FOR  
PURCHASE!**



### **Features:**

- RAM 5500 Tradesman, 4x4, Crew Cab chassis
- 6.7L I6 Cummins Turbo diesel, 6-speed automatic
- CA: 84 in.
- Max tow package
- Trailer brake controller
- ParkView rear back-up camera kit
- 220-amp alternator
- Manual DPF regeneration

### **APPARATUS BODY**

- High Side Dakota service body
- Service body:  
93<sup>3</sup>/<sub>4</sub>" w x 58" h x 134" length
- Full aluminum body
- 18-gauge galvanized shelving installed on aluminum unistrut for infinite adjustment
- LED Stop/Turn/Tail lights
- 7/4-way trailer connection



**Contact your  
Account Manager or  
[sales@glickfire.com](mailto:sales@glickfire.com) to  
schedule a demo today!**



## NEW SALES

COMPANY	COUNTY	APPARATUS TYPE	ACCOUNT MGR.
AMED EMS	Blair	Demers Sprinter Type II Ambulance	Pete Frejkowski
BETHLEHEM TOWNSHIP VOLUNTEER FIRE COMPANY	Northampton	Pierce Enforcer Heavy-Duty Rescue Pumper	Rob Macchia
BLACKLICK VALLEY FOUNDATION AMBULANCE	Cambria	Demers Transit Type II Ambulance	Pete Frejkowski
BOROUGH OF ELLWOOD CITY	Lawrence	Pierce Enforcer Ascendant 100' Mid-Mount	Joe Wrenn
BOROUGH OF ELLWOOD CITY	Lawrence	Pierce Enforcer Pumper	Joe Wrenn
CAMBRIA ALLIANCE EMS	Cambria	Demers Sprinter Type II Ambulance	Pete Frejkowski
CITIZENS FIRE COMPANY NO. 1	Cumberland	Pierce Enforcer Pumper	Cyle Sheaffer
CITY OF BUTLER FIRE DEPT.	Butler	Pierce Saber Pumper	Joe Wrenn
CITY OF FRANKLIN FIRE DEPT.	Venango	Pierce Saber Pumper <b>PIERCE STOCK UNIT!</b>	Joe Wrenn
EAST CARNEGIE VOLUNTEER FIRE DEPT NO. 1	Allegheny	Pierce Enforcer Ascendant 107' Tandem Axle	Sam Gates
EAST NORRITON TOWNSHIP	Montgomery	Vengeant Squall Utility Unit	Matt Wiedenhaefer
EAST WHITELAND TOWNSHIP	Chester	Pierce Saber Pumper <b>GLICK STOCK UNIT!</b>	Chris Obenchain
EDGE HILL FIRE COMPANY NO. 1	Montgomery	Pierce Enforcer Pumper	Matt Wiedenhaefer
FAIRFIELD FIRE & EMS	Adams	Vengeant Ford F550 Sandstorm Brush Truck	Cyle Sheaffer
GOODWILL HOSE COMPANY NO. 3	Bucks	Pierce Enforcer Pumper	Matt Wiedenhaefer
GOSHEN FIRE COMPANY	Chester	Pierce Enforcer Pumper	Chris Obenchain
GOSHEN FIRE COMPANY	Chester	Pierce Enforcer Rescue Pumper	Chris Obenchain
HARLEYSVILLE COMMUNITY FIRE COMPANY	Montgomery	Pierce Enforcer Ascendant 100' Mid-Mount Aerial	Matt Wiedenhaefer
HARMONY FIRE DISTRICT	Butler	Pierce Enforcer Heavy-Duty Rescue Pumper	Sam Gates
KUNKLE FIRE COMPANY	Luzerne	FPG Remount Ambulance	Nick DeWitt
LIONVILLE FIRE COMPANY	Chester	Pierce Enforcer PUC Pumper	Chris Obenchain
MANHEIM TOWNSHIP AMBULANCE ASSOC	Lancaster	FPG Remount Ambulance	Nick DeWitt
MINQUAS FIRE COMPANY NO. 2	Chester	Braun Select Chief XL Type I Ambulance	Nick DeWitt
NEW HOPE EAGLE FIRE COMPANY	Bucks	Pierce Enforcer Heavy-Duty Rescue Pumper	Matt Wiedenhaefer
NORTH CODORUS TOWNSHIP	York	Pierce Enforcer Pumper	Cyle Sheaffer
POCONO MOUNTAIN REGIONAL EMS	Monroe	Braun Express Plus Type I Ambulance	Chris Woolfolk
POCONO MOUNTAIN REGIONAL EMS	Monroe	Braun Express Type III Ambulance	Chris Woolfolk
SCHUYLKILL EMS (POTTSVILLE EMS)	Schuylkill	Demers Sprinter Type II Ambulance	Chris Woolfolk
SECOND ALARMERS RESCUE SQUAD	Montgomery	Braun "Select" Chief XL Type I Ambulance <b>GLICK STOCK UNIT!</b>	Nick DeWitt
SECOND ALARMERS RESCUE SQUAD	Montgomery	Braun Liberty Type I Ambulance	Nick DeWitt
STRASBURG FIRE COMPANY	Lancaster	Pierce/Kenworth Tanker	Jake Bachman
SUBURBAN EMS	Northampton	Crestline CCL150 Type III Ambulances <b>**2 UNITS! **</b>	Nick DeWitt
TRITON HOSE COMPANY	Wyoming	Skeeter F550 Brush Truck	Rob Macchia
UNDINE FIRE COMPANY	Centre	Pierce Saber Pumper <b>GLICK STOCK UNIT!</b>	Rusty Schreiner



**NEW SALES**

COMPANY	COUNTY	APPARATUS TYPE	ACCOUNT MGR.
UPPER MERION TOWNSHIP	Montgomery	Pierce Enforcer Pumper	Matt Wiedenhaefer
WARRINGTON COMMUNITY AMBULANCE	Bucks	Braun Select Chief XL Type I Ambulance	Nick DeWitt
WELLSBORO EMS	Tioga	FPG Remount Ambulance	Chris Woolfolk
WESTERN BERKS FIRE DEPT	Berks	Pierce Enforcer Pumper	Jake Bachman
YORK COUNTY	York	Frontline C-25X-2 Mobile Command	Cyle Sheaffer

**VISIT OUR WEBSITE FOR MORE APPARATUS ON ORDER!**

**[www.glickfire.com/on-order](http://www.glickfire.com/on-order)**

**NEW FEATURE!**

***You can now follow along with the build process of on-order Pierce Apparatus on our website!***

***Check out the Production Reports from these departments:***

***YARDLEY MAKEFIELD FC • RIDGE FC • CRANBERRY TOWNSHIP VFC • LYONS FC  
FALLS TWP FC • HERSHEY VFC • TWIN VALLEY FD • BOYERTOWN AREA FIRE & RESCUE  
EAST NORRITON TWP • CHAMBERSBURG FD • UNION FC OF LEESPORT • WORCESTER FD  
CITY OF CHESTER FD • WHITE HAVEN FC • DENVER FC • GRANVILLE FC • PLAINS TWP FD  
PRESTO VFD • BETHEL PARK VFC • PERRY TWP VFD • SPRINGFIELD VFD • SOMERSET VFC • AND MORE!!***

***Check back often for additional units and updates!***

**VISIT [glickfire.com/on-order](http://glickfire.com/on-order) and search for department name. Go to the PRODUCTION IMAGES tab to view PDFs.**

**FIREHOUSE GRUB****Sticky Cinnamon Bacon Roll-ups** *(Makes 8)*

- Nonstick cooking spray
- 1/2 cup sugar
- 12 slices Applewood Smoked or Honey and Maple Bacon
- 1/4 cup melted butter
- 4 flour tortillas (8 inches)
- 2 teaspoons cinnamon
- 2 tablespoons applesauce

Heat oven to 375°F. Spray baking sheet with nonstick cooking spray.

Cook bacon according to package directions; drain. Combine cinnamon and sugar; mix well.

Brush melted butter on both sides of each tortilla; coat both sides with cinnamon sugar.

Place three slices bacon and 2 teaspoons applesauce on one edge of tortilla. Roll up and place seam-side down in prepared pan. Repeat with remaining tortillas.

Bake 12-16 minutes until sugar mixture is bubbly. Cut tortilla roll-ups in half before serving. Serve warm.



**BACK MOUNTAIN REGIONAL FIRE & EMS, Luzerne County, Job #F25C-21134**

**Crestline CCL150 Type III Ambulance** on a Ford E350 chassis; Stryker Performance-LOAD; 72" body; All Whelen LED emergency lighting; Rear camera

**CUMRU TOWNSHIP FIRE DEPT., Berks County, Job #39842**

**Pierce Freightliner FX Tanker**; Cummins L9, 400 hp engine; Waterous 1,000 GPM PTO pump; 3,000-gallon tank; Pierce 7" LCD FX rear camera; Weldon V-MUX electrical system; FXT manual portable tank rack, with cover; 10-inch Newton air-controlled rear dump chute; (2) 2.5" direct rear tank fills; **GRAPHICS, TOOL MOUNTING AND UPFIT BY GLICK**

**EAST BRANDYWINE FIRE COMPANY, Chester County, Job #39276**

**Pierce Enforcer Walk-In Heavy-Duty Rescue Pumper**; Cummins X12, 500 hp engine; Hale 250 GPM; 300-gallon tank; Harrison 10kW generator; 22-inch extended bumper; Warn Zeon 10,000 lb. portable winch, wireless; Skylight escape hatch; Side Roll and Frontal Impact Protection; TAK-4 Independent Front Suspension; **TOOL MOUNTING BY GLICK**

**ELK RUN FIRE COMPANY, Jefferson County, Job #RR0347**

**River Raptor XTR 1860 Heavy-Duty Rigid Inflatable Rescue Boat**; Rotax Supercharged 300 hp engine; XTR 3500 lb. winch assembly; T-top mounted communications box; Helm-mounted Garmin GPS; Whelen IonV red/white warning lights; Custom trailer with LED Guide Lights

**ELKINS PARK FIRE COMPANY, Montgomery County, Job #40290**  
**Pierce Enforcer Pumper**; Cummins L9, 450 hp engine; Waterous 2,000 GPM two-stage pump; 500-gallon tank; New York style hose bed; 3.00" Deluge outlet with TFT Extend-a-gun XG18; Akron monitor; 19-inch extended bumper

**HARLEYSVILLE AREA EMS, Montgomery County, Job #F25C-21142**

**Crestline CCL150 Type III Ambulance** on a Ford E350 chassis; Stryker Power-LOAD and cot; CPR seating; O2 to Go oxygen lift system; All Whelen LED emergency lighting; Rear camera; **UPFIT BY GLICK**

**GOOD FELLOWSHIP AMBULANCE, Chester County, Job #F25C-6657**

**Demers MX-164 Type III Ambulance** on a Ford E450 diesel chassis; Cab extended into module for more cab space and improved ergonomics; Stryker Power-LOAD; Traffic emitter; Whelen emergency lighting; **UPFIT BY GLICK**

**HANOVER TWP COMMUNITY AMBULANCE, Luzerne County, Job #F25C-20231**

**Crestline CCL150 Type III Ambulance** on a Ford E350 chassis; Stryker Power-LOAD and cot; CPR seating; (7) LED emergency lights on front; All Whelen LED emergency lighting; Rear camera; **UPFIT AND GRAPHICS BY GLICK**

**LOWER PROVIDENCE VOLUNTEER FIRE COMPANY, Montgomery County, Job #39472**

**Pierce Enforcer Pumper**; Cummins L9, 450 hp engine; Hale 2,000 GPM pump; 750-gallon tank; New York style hose bed; 3.00" Deluge outlet with TFT Extend-a-gun XG18; Akron monitor; 19-inch extended bumper; Oil-dry hopper in slide-out compartment; Side Roll and Frontal Impact Protection

**LEHIGH VALLEY HEALTH NETWORK, Luzerne and Monroe County, Job #F25C-21136/37/38/39/40/41 \*\*6 UNITS\*\***

**Crestline CCL150 Type III Ambulance** on a Ford E350 chassis; Stryker Power-LOAD; Traffic emitter; O2 to Go oxygen lift system; CPR seating; (7) LED emergency lights on front; All Whelen LED emergency lighting; Rear camera; **UPFIT AND GRAPHICS BY GLICK**

**LEHIGH VALLEY HEALTH NETWORK, Lehigh County, Job #09271**

**Braun Chief XL Type I Ambulance** on a Ford F550 chassis; Stryker Power-LOAD; EZ O2 Lift; Traffic emitter; Ali Arch front bumper; Whelen M-series emergency lighting; **GRAPHICS BY GLICK**





**MANHEIM TWP AMBULANCE, Lancaster County, Job #17162**

**First Priority Renaissance Remount Type III Ambulance** on a Ford E450 chassis; New paint; New heat/AC; New floor; Upgraded scene lights to LED; New LED strip lighting in outside compartments; New custom center console; Rumbler siren; **GRAPHICS AND UPFIT BY GLICK**



**MANSFIELD FIREMENS AMBULANCE, Tioga County, Job #17537**  
**First Priority Renaissance Remount Type III Ambulance** on a Ford E450 chassis; New custom paint; New heat/AC; Upgrade scene lights to LED; New front chrome bumper guard; **GRAPHICS BY GLICK**

**MOUNT BETHEL VOLUNTEER FIRE COMPANY, Northampton County, Job #39152**

**Pierce Enforcer Pumper**; Cummins X12, 500 hp engine; Waterous 1,750 GPM pump; 1,250-gallon tank; Husky 3 foam system with 25-gallon foam cell; Harrison 3kW generator; (2) 1.75" speedlays and (1) 2.50" speedlay; 3.00" Deluge outlet with TFT Extend-a-gun XG12; TFT Crossfire monitor; 19-inch extended bumper; Will-Burt Chief light tower; Zico Quic-Lift hydraulic tank rack; Side Roll and Frontal Impact Protection; TAK-4 Independent Front Suspension



**MT PLEASANT TWP VOLUNTEER FIRE DEPT., Washington County, Job #41203**

**Pierce Saber Pumper**; Cummins L9, 450 hp engine; Waterous 1,500 GPM pump; 1,000-gallon tank; New York style hose bed; 3.00" Deluge outlet; Akron monitor; 19-inch extended bumper; Oil dry compartment with slide out hopper; 4.00" front inlet; **GRAPHICS BY GLICK**

**NANTICOKE FIRE COMPANY, Luzerne County, Job #39337**

**Pierce Enforcer Ascendant 100' Mid-mount Aerial**; Cummins X15, 605 hp engine; Waterous 2,000 GPM pump; 300-gallon tank; (2) TFT Monsoon monitors; Flowmeter MUX waterway; 15-inch extended bumper; TAK-4 Independent Front Suspension; TAK 4 T3 rear suspension; **TOOL MOUNTING BY GLICK**

**NORTHERN VALLEY AREA EMS, Lehigh County, Job #09366**  
**Braun Express Type III Ambulance** on a Ford E350 chassis; Stryker Power-LOAD; Traffic emitter; On-Spot tire chains; Front and rear SUMO Springs; Zico QRD2 oxygen brackets; **GRAPHICS BY GLICK**

**NORTHERN YORK COUNTY FIRE RESCUE AND EMS, York County, Job #39468**

**Pierce Enforcer Pumper**; Cummins L9, 450 hp engine; Hale 1,500 GPM pump; 1,000-gallon tank; 20-gallon foam cell; New York style hose bed; 3.00" Deluge outlet with TFT Extend-a-gun XG18; Akron monitor; 22-inch extended bumper; Side Roll and Frontal Impact Protection; TAK-4 Independent Front Suspension; 6.00" front inlet; **TOOL MOUNTING BY GLICK**

**OSCOLUWA ENGINE & HOSE COMPANY, Bradford County, Job #40753**

**Pierce Velocity Pumper**; Cummins X12, 525 hp engine; Hale 2,000 GPM pump; 1,000-gallon tank; Husky 12 dual-agent foam system with 25-gallon Class B foam cell and 20-gallon Class A foam cells; (3) speedlays; Top mount pump house; 3.00" Deluge outlet; Akron monitor; 22-inch extended bumper; Side Roll and Frontal Impact Protection; TAK-4 Independent Front Suspension; 5.00" front inlet; **TOOL MOUNTING BY GLICK**

**PENNS VALLEY EMS, Centre County, Job #F25C-6658**

**Demers MX-164 Type III Ambulance** on a Ford E350 chassis; Backup camera; Power locks and windows; LED dome lighting; All LED Whelen emergency lighting; **GRAPHICS BY GLICK**

**PLEASANT GAP FIRE COMPANY, Centre County, Job #40555**

**Pierce Enforcer Pumper**; Cummins L9, 450 hp engine; Waterous 1,500 GPM pump; 750-gallon tank; New York style hose bed; 3.00" Deluge outlet with TFT Extend-a-gun XG12; Akron monitor; 19-inch extended bumper; Side Roll and Frontal Impact Protection; TAK-4 Independent Front Suspension; 6.00" front inlet; **GRAPHICS BY GLICK**

**POCONO MOUNTAIN REGIONAL EMS, Monroe County, Job #07847R**

**First Priority Renaissance Remount Type III Ambulance** on a Ford E350 Super Duty chassis; Stryker Power-LOAD; New paint; New electrical; New heat/AC; **GRAPHICS AND UPFIT BY GLICK**

**NORTHERN BERKS EMS, Berks County, Job #F25C-21144**

**Crestline CCL150 Type III Ambulance** on a Ford E350 chassis; Stryker Power-LOAD and cot; Traffic emitter; O2 to Go oxygen lift system; CPR seating; All Whelen LED emergency lighting; Rear camera; **UPFIT BY GLICK**





**TOPTON COMMUNITY AMBULANCE, Berks County,  
Job #05947R**

**First Priority Renaissance Remount Type III Ambulance** on a Ford E350 Super Duty chassis; Stryker Power-LOAD; New paint; New electrical; New heat/AC; Custom center console; Rear camera; **GRAPHICS BY GLICK**

**WESTFALL TWP VOLUNTEER FIRE DEPT, Pike County,  
Job #0342**

**River Raptor SR-XD 2072 Rescue Boat**; Rotax Supercharged 300 hp engine; Livorsi INR shifter system; Fishmaster t-top; T-top mounted communications box; NMEA 2K marine communications network; Helm lever stomp grate; Fold and stow boarding ladder system; Bow-recessed LED lightbar package; LED cockpit and deck lighting package; Underwater transom light package; Custom dual axle aluminum roller trailer



**WHITEMARSH COMMUNITY AMBULANCE,  
Montgomery County, Job #F25C-21143**

**Crestline CCL150 Type III Ambulance** on a Ford E350 Super Duty chassis; Stryker Performance-LOAD; O2 to Go oxygen lift system; CPR seating; (7) LED emergency lights on front; All Whelen LED emergency lighting; Rear camera; Air horns; **GRAPHICS BY GLICK**



## Is Your Department Looking for a New Emergency Vehicle?

Our sales team will work hard to get to know your department *and* your community so that we can help you design the most effective and dependable apparatus to serve your community for years to come.

Contact [sales@gllickfire.com](mailto:sales@gllickfire.com), or find your account manager at [www.GlickFire.com/account-managers](http://www.GlickFire.com/account-managers).

## Some Interesting Things About EMTs and Paramedics

Paramedics always notice how IV-friendly your veins are, even if you are not their patient. You think they are looking at you in a romantic way? They're probably thinking about how your veins would be great for a 14-gauge needle.

Rarely do those in EMS have the pleasure of finishing a meal while on duty. Inevitably, the tones will go off to dispatch the crew to a call just as their food has finished cooking. This is why those involved in EMS can eat a five-course meal 2 minutes flat.

Paramedics have a warped sense of humor. The longer they are in EMS, the more twisted their humor becomes. After seeing so many horrific things, this dark sense of humor becomes a protective mechanism to handle the unbelievable stress that comes with the job.

EMS workers bring their work home with them. Yes, their shift may end, but they can't just erase what they saw.

Because EMS shifts are long, sometimes more than 24 hours long, sleep is a necessity. You can bet as soon as an EMS worker falls asleep, they will be abruptly awakened and dispatched to a call.

The quickest way to make a paramedic mad is to call him an "ambulance driver." Next time you are in pain or have a life-threatening condition, do you really want a "driver" to come to your rescue?

These traits may seem quirky, but let's all be thankful these dedicated men and women are there when we need them the most!

THANK YOU!





If your department is looking to get Upfit services (such as lighting and siren installation, consoles, or radio updates), or Graphics for your fleet, GLICK can get that done for you! We offer quality manufacturer items and skilled technicians to get your apparatus performing at top condition and looking great!

**GLICK**  
Upfit

## RECENT DELIVERIES

**GLICK**  
Graphics

**BERWYN FIRE COMPANY, Chester County,**  
Ford F550 Brush Truck - Compartment Tool mounting and hose bed straps. Also did graphics.



**NORTH MIDDLETON TOWNSHIP, Cumberland County,**  
Pierce Kenworth Tanker - Complete Graphics install



**GOOD FELLOWSHIP AMBULANCE CLUB, Chester County,**  
UTV - EMS skid unit install in UTV bed



**MANSFIELD FIREMENS AMBULANCE, Tioga County,**  
Remount Ambulance - Complete Graphics install







www.glickfire.com



**LANCASTER COUNTY**  
350 Mill Creek Road  
Bird In Hand, PA 17505  
(717) 299-4120

**MONTGOMERY COUNTY**  
110 Christopher Lane  
Harleysville, PA 19438  
(267) 638-6380

**CLINTON COUNTY**  
7484 Nittany Valley Drive  
Mill Hall, PA 17751  
(570) 858-0500

**BUTLER COUNTY**  
2348 Evans City Road  
Zelienople, PA 16063  
(724) 452-5553

*If you no longer wish to receive our newsletter, or are receiving duplicates, please email [marketing@glickfire.com](mailto:marketing@glickfire.com), or call 717.299.4120.*

## GLICK SPONSORED EVENTS\*

- |           |  |           |   |
|-----------|--|-----------|---|
| Aug 6-9   | Lisburn Community FC – <i>Annual Old Time Festival</i>                 | Aug 25    | 50th Anniversary Celebration of Pittsburgh Emergency Medical Services – <i>Sheraton Hotel in Station Square</i> |
| Aug 10    | Collegeville FC – <i>Main Street Car Show</i>                          | Aug 29-31 | Ford City Hose Co – <i>Street Fair</i>  |
| Aug 16    | Ford Cliff VFC – <i>Rock'n the Cliff</i>                               | Sept 5    | York Revolution Baseball – <i>First Responders Night</i>  |
| Aug 13-16 | Lingohocken FC – <i>Middletown Grange Fair</i>                         | Sept 6    | Amity FC – <i>Golf Tournament</i>   |
| Aug 15-17 | Columbia VFC, Clearfield Cty – <i>Central District convention</i>      | Sept 10   | Friendship Fire Co. No. 1 – <i>Citizens Fire Academy</i>  |
| Aug 15-17 | Butler County Fire Chief's Assoc – <i>Jimmy Ellis Training Weekend</i> | Sept 12   | Fairless Hills FD – <i>Golf Outing</i>  |
| Aug 20    | Southeast PA Firefighters – <i>Golf Tournament</i>                     | Sept 19   | Columbia Borough FD – <i>Big Fish Memorial Golf Outing</i>  |
| Aug 22    | Morris Twp VFC – <i>10th Annual Mega Bash</i>                          | Sept 19   | Port Matilda FC – <i>Outdoor Raffle Event</i>   |
| Aug 22    | West Grove FC – <i>Golf Outing</i>                                     | Sept 20   | Hilltown Twp VFC – <i>Wines on the Hill Festival</i>  |
| Aug 23    | Chicora Independent Hose. Co – <i>Fall Gun Raffle</i>                  | Sept 26   | Strasburg FC – <i>Jim Kiscaden Memorial Golf Tournament</i>   |
| Aug 23    | Scottdale VFD – <i>Golf Outing</i>                                     | Sept 27   | Marshall's Creek FC – <i>Fall Classic Golf Tournament</i>   |
| Aug 23    | Worcester VFD – <i>Chicken BBQ</i>                                     | Oct 3-4   | Concepts in Trauma and Critical Care Conference – <i>Tioga Downs Casino Resort</i>                              |
| Aug 24    | Moon Twp FC – <i>Car Cruise</i>  |           |   |

\*ALL EVENTS SUBJECT TO CHANGE.  
Not a complete list. Visit [glickfire.com/events](http://glickfire.com/events) for more info

**Seven Mtns EMS Council Fall Conference, Oct. 3-5 • Pine Barn Inn, Danville, PA**