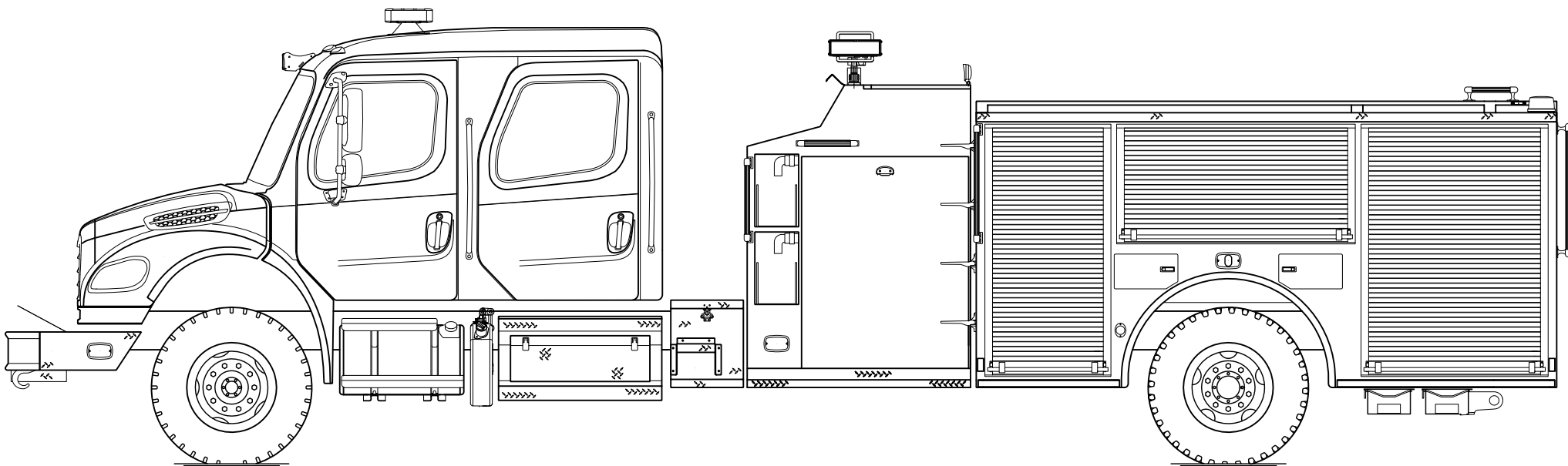




PERFORM. LIKE NO OTHER.™

Freightliner Pumper

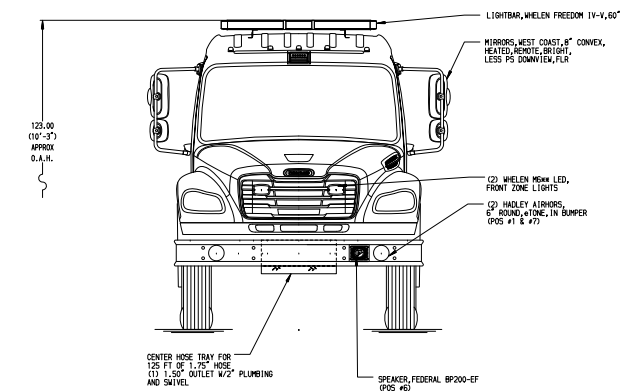


Chassis

Chassis	4-door Freightliner M2-106 cab
Seating Capacity	5
Overall Height	10' 3"
Overall Length	34' 2"
GVW Rating	37,300 lb
Front Axle	Freightliner, 13,300 lb
Rear Axle	Meritor, 24,000 lb
Engine	Cummins L9, 360 hp, 1150 lb-ft

Body

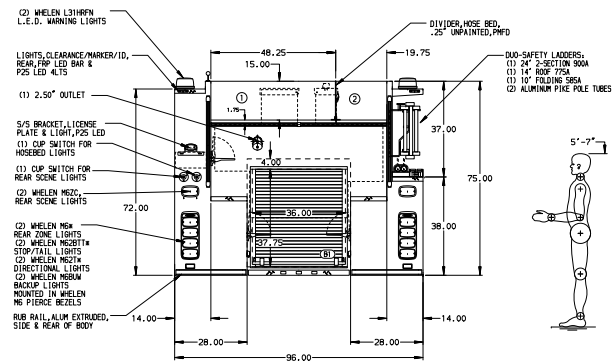
Material	Aluminum
Compartmentation	152" high/low compartmentation
Doors	Rollup
Pump	Waterous, 1,500 gpm
Tank	750 gallons
Pump Panel	Pierce® Control Zone™ 45" pump panel w/ 19" walkway
Foam System	Provisions for future foam system
Foam Cell	20 gallons



HOSEBED CAPACITIES

① - 1000' OF 5.00" D.J. POLY HOSE

② - 400' OF 3.00" D.J. POLY HOSE



 MANUFACTURING INC.										JOB NO.	41200AD
										SCALE	DATE
										DRAWN BY	22MAR24
										CHECKED BY	22MAR24
										SHEET SIZE	SHEET NO.
										D	1 of 1