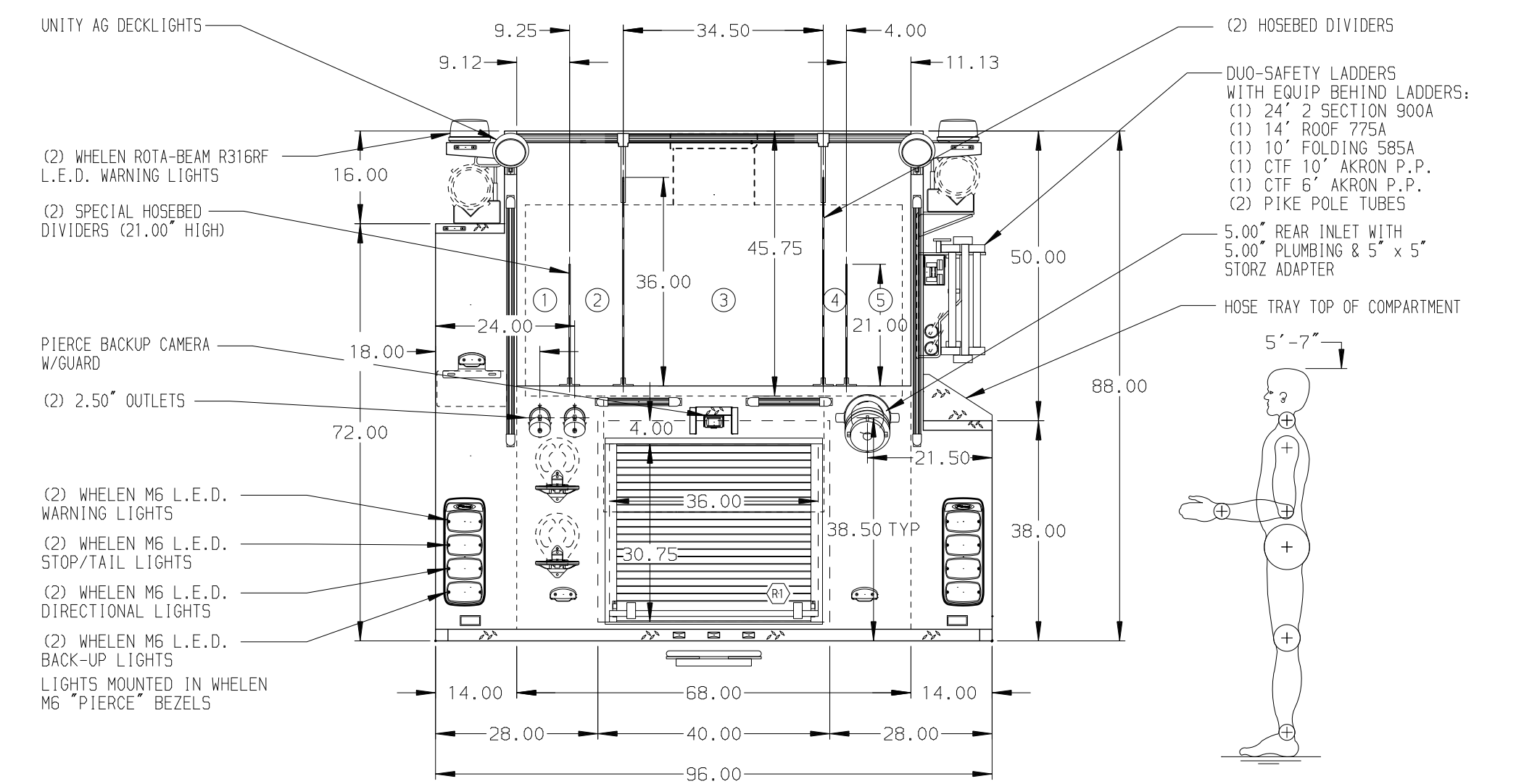


- HOSEBED CAPACITIES
- ① 300' OF 2.50" D.J. POLY HOSE
  - ② 300' OF 2.50" D.J. POLY HOSE
  - ③ 1000' OF 5.00" D.J. POLY HOSE
  - ④ 150' OF 1.75" D.J. POLY HOSE
  - ⑤ 300' OF 3.00" D.J. POLY HOSE



ALUMINUM BODY

SIDE ROLL AND FRONTAL IMPACT PROTECTION

NOTE  
DIMENSIONS SHOWN ARE APPROXIMATE AND ARE SUBJECT TO MINOR DEVIATIONS AS MAY OCCUR OR BE NECESSARY IN CONSTRUCTION. MINOR DETAILS NOT SHOWN.

1. IOTA BATTERY CHARGER LOCATED BEHIND DRIVERS SEAT
2. BATTERY CHARGE INDICATOR DISPLAY LOCATED BEHIND DRIVERS SEAT THROUGH WINDOW
3. REVERSED HINGED DOOR ON COMPARTMENT D3
4. ONE FULL WIDTH/DEPTH PAINTED ADJUSTABLE SHELF IN COMPARTMENT D1, D2 & D3
5. PEGBOARD W/TRACK ON REAR WALL IN COMPARTMENT D3
6. WORDEN HWGY-SB SUPER GRIPPER WHEEL CHOCKS MOUNTED AT PICK-UP

REV	DATE	BY	CH	ENFORCER
22FEB16	AMI	DTS		CHASSIS DATA
20JAN16	AMI	DTS		MAKE
01DEC15	AMI	CSH		PIERCE
				MODEL

TITLE	FOR	DWG NO.
2000-D-750P 136" PUMPER BODY, LOW SIDE PS, DS FH (3)XLAYS, DELUGE, LDRS ON PS SIDE SHEET, REAR INLET	HILLTOP HOSE COMPANY OF NATRONA NATRONA HEIGHTS, PENNSYLVANIA	29516AD

JOB NO.	SCALE	DATE
29516	1:24	
DRAWN BY	CHECKED BY	SHEET SIZE
AMI	CSH	D
DATE	SHEET NO.	OF 1
16NOV15	16NOV15	1