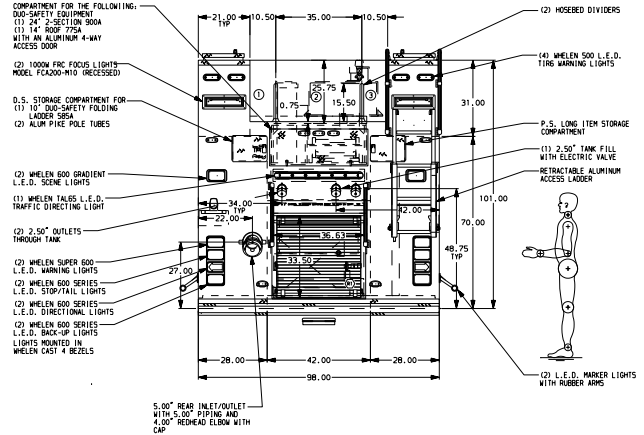


- HOSEBELLS CAPACITIES
- ① 300' OF 2.50" O.D. POLY HOSE
  - ② 1000' OF 4.00" O.D. POLY HOSE
  - ③ 300' OF 2.50" O.D. POLY HOSE



**ALUMINUM BODY**

- NOTE**
- DIMENSIONS SHOWN ARE APPROXIMATE AND ARE SUBJECT TO MINOR DEVIATIONS AS MAY OCCUR OR BE NECESSARY IN CONSTRUCTION. MINOR DETAILS NOT SHOWN.
1. AIR INLET WITH DISCONNECT COUPLING LOCATED IN D.S. STEP WELL
  2. PIERCE LOGS MOUNTED LOCATED FRONT AND REAR
  3. 5/8" FENDER CROWS LOCATED FRONT AND REAR
  4. MOUNTING BRACKETS FOR ANTENNAS LOCATED PER SHOP ORDER
  5. DUAL PRO BATTERY CHARGER LOCATED IN PUMP PLUMBING AREA
  6. ONE HANNAY ELECTRIC REWIND REEL MODEL SPEN-23-24 WITH CAPACITY FOR 200' OF 1.00" HOSE LOCATED IN COMPARTMENT R1 WITH 1/2 HP MOTOR
  7. HOSE 12 GPM AGENT FOAM SYSTEM RESERVOIR LOCATED IN PUMP PLUMBING AREA
  8. L.E.D. PERIMETER SCENE LIGHTS LOCATED PER SHOP ORDER
  9. CIRCUIT BREAKER PANEL LOCATED IN COMPARTMENT D3
  10. TWO HANNAY ELECTRIC REWIND CABLE REELS MODEL 1618-17-18 WITH CAPACITY FOR 200' OF 10/4 CABLE
  11. ONE 1IN HATCH COMPARTMENT ABOVE D2 & ONE ABOVE P3 WITH HOSEB BELLS-20 JUNCTION BOXES AND HOLDERS
  12. FOUR 15A 120V CIRCULAR RECEPTABLES LOCATED IN CAB
  13. ONE 30A 240V RECEPTABLE LOCATED IN EACH HATCH COMPARTMENT REAR HYDRAULIC EQUIPMENT
  14. FOUR HANNAY ELECTRIC REWIND HYDRAULIC HOSE REELS MODEL 2018-17-18 WITH CAPACITY FOR 100' OF 2.5" O.D. HOSE LOCATED IN HATCH COMPARTMENTS TWO ABOVE D2 & TWO ABOVE P3
  15. ONE MOUNTING BRACKET FOR HANNAY POWER SUPPLY UNIT LOCATED IN FORWARD AREA OF EACH HATCH COMPARTMENT
  16. STORAGE BASKETS FOR 120 AIR BOTTLES IN HATCH COMPARTMENT ABOVE P1/P2
  17. ONE FLOOR MOUNTED SLIDE-OUT TRAY LOCATED IN D3 & P3
  18. TWO ADJUSTABLE SLIDE-OUT TRAYS LOCATED IN D1, P1 & P4
  19. ONE ADJUSTABLE SLIDE-OUT TRAY LOCATED IN D1, P1 & P2
  20. ONE SWING-OUT TOOLBOX LOCATED IN D2
  21. ONE VINYL FLAP LOCATED IN COMPARTMENT D2 & P2
  22. ONE ADJUSTABLE SHELF LOCATED IN D3 & P3
  23. ALUMINUM PEGBOARD TO BE MOUNTED ON BACK WALL OF D2

CUSTOMER APPROVAL				JOB NO.	22055
APPROVED BY:				SCALE	1:24
DATE:				DATE	18MAR09
CHASSIS DATA				DRAWN BY	HSD
TITLE	1500-D-750P, 50 GALLON FOAM TANK, 214" PUC BODY (2) X-LAYS, LADDERS IN POLY RACK, REAR INLET/OUTLET			CHECKED BY	SHA
FOR	MORRISVILLE FIRE COMPANY MORRISVILLE, PA			DATE	24MAR09
REV	DATE	BY	CH	DWG NO.	22055AD
				SHEET SIZE	D
				SHEET NO.	1 of 1