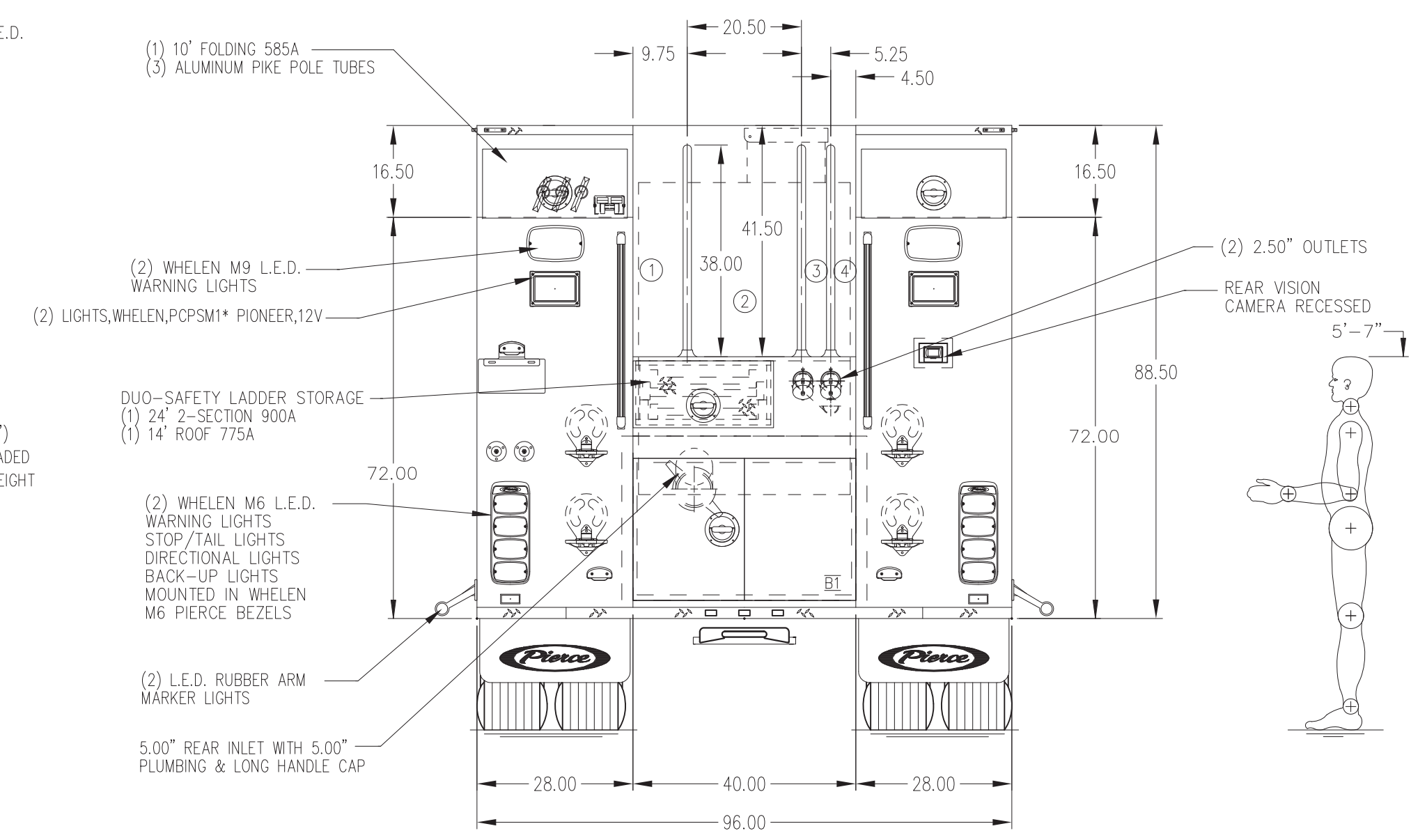
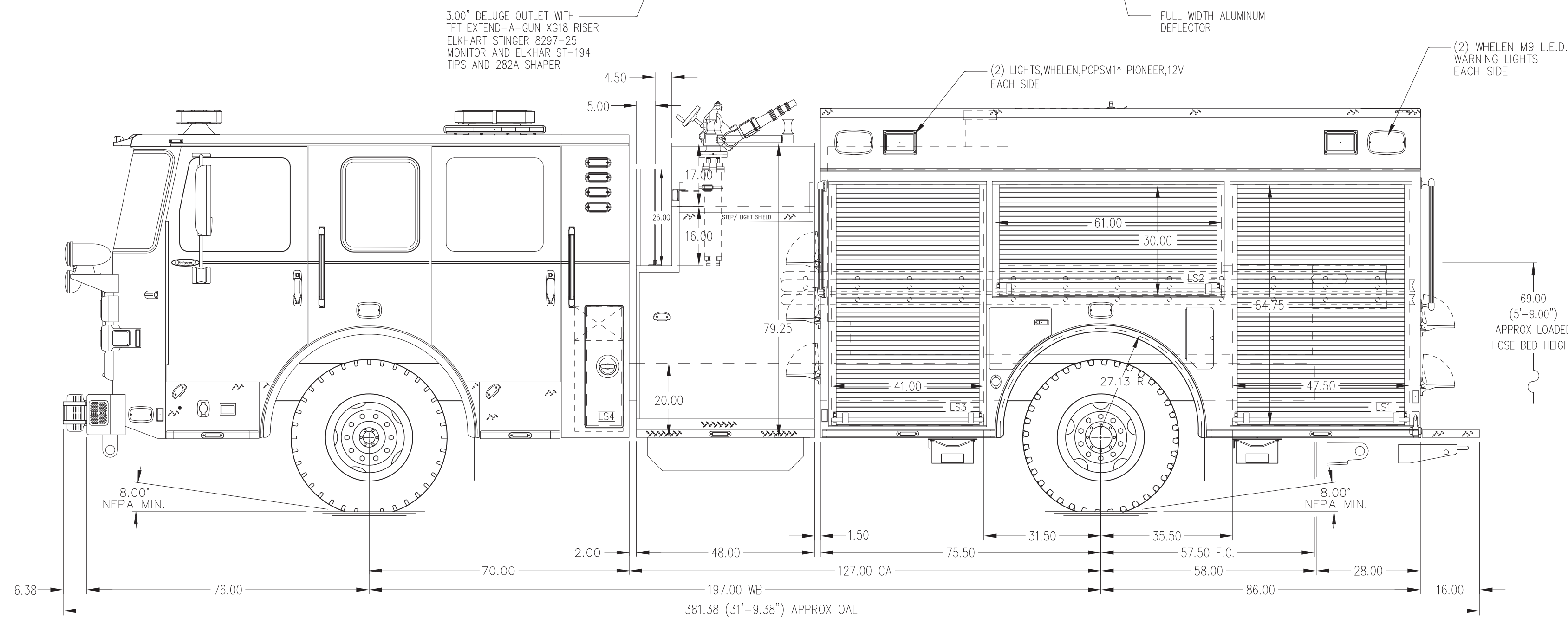


- HOSEBED CAPACITIES
- ① 800' OF 2.50" D.J. HOSE (DEADLAY)
 - ② 1200' OF 3.00" D.J. HOSE (DEADLAY)
 - ③ 200' OF 1.75" D.J. HOSE (PRECONNECT SINGLE STACK)
 - ④ 300' OF 1.75" D.J. HOSE (PRECONNECT SINGLE STACK)



ALUMINUM BODY

MAX O.A.H. 9'-8.00"

SIDE ROLL AND FRONTAL IMPACT PROTECTION

NOTE
 DIMENSIONS SHOWN ARE APPROXIMATE AND ARE SUBJECT TO MINOR DEVIATIONS AS MAY OCCUR OR BE NECESSARY IN CONSTRUCTION.
 MINOR DETAILS NOT SHOWN.

- 1. SHORELINE RECEPTACLES LOCATED IN THE DRIVER SIDE STEPWELL.
- 2. AIR INLET WITH DISCONNECT COUPLING IN THE DRIVER SIDE STEPWELL.
- 3. BATTERY CHARGER LOCATED PER ORDER.

REV	DATE	BY	CH	ENFORCER
05MAR24	KRG	-		CHASSIS DATA
12FEB24	KRG	-		MAKE
11DEC23	KRG	-		PIERCE
01DEC23	KRG	-		MODEL

		PROPOSAL	920
		SCALE	DATE
TITLE	1500-D-500P, 161" PUMPER BODY LADDERS THRU TANK, (2) CROSSLAYS	DRAWN BY	29NOV2023
FOR	SHARON HILL FIRE COMPANY SHARON HILL, PA	CHECKED BY	N/A
DWG NO.	PRELIMINARY PRINT ONLY	SHEET SIZE	SHEET NO.
		D	1 OF 1