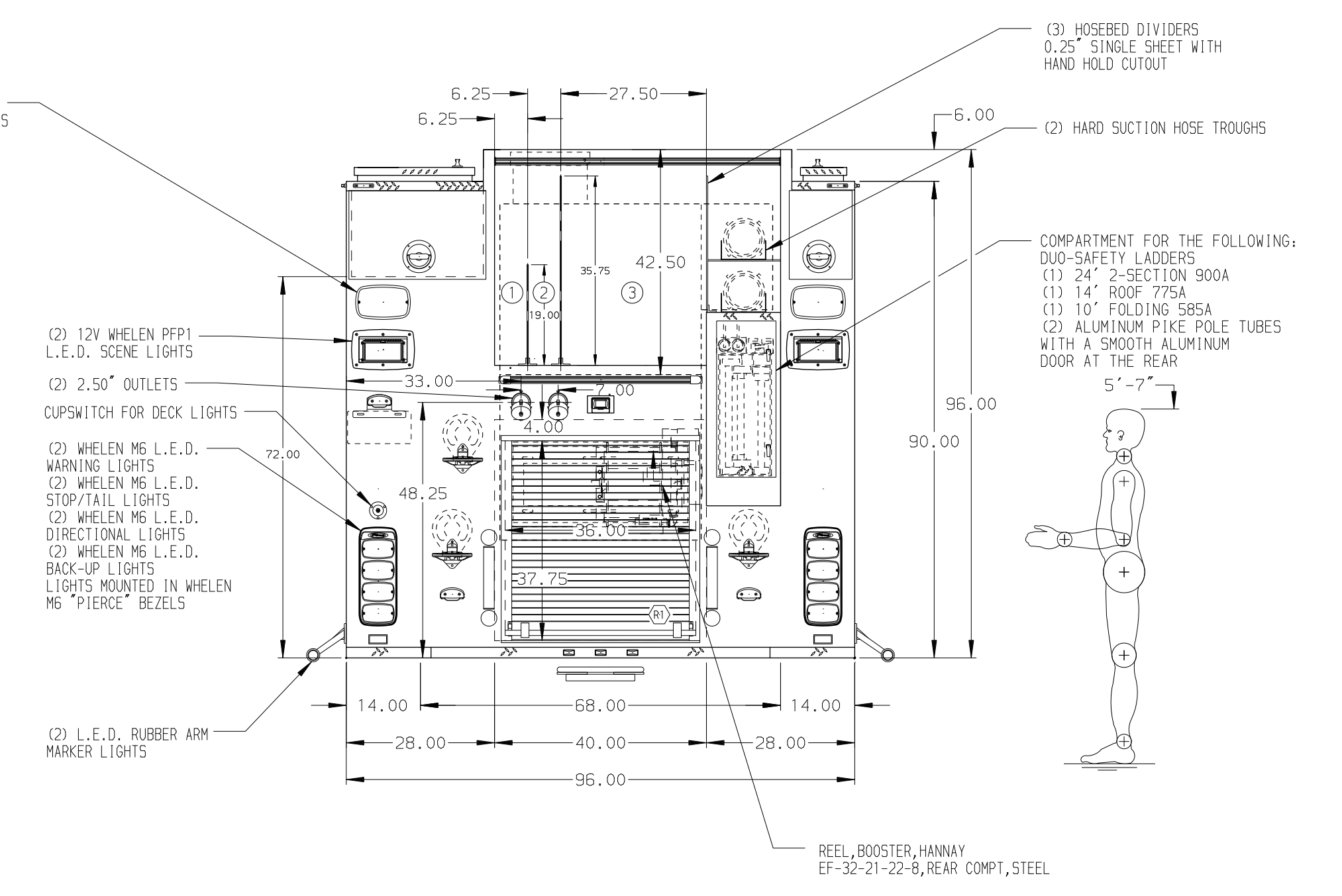
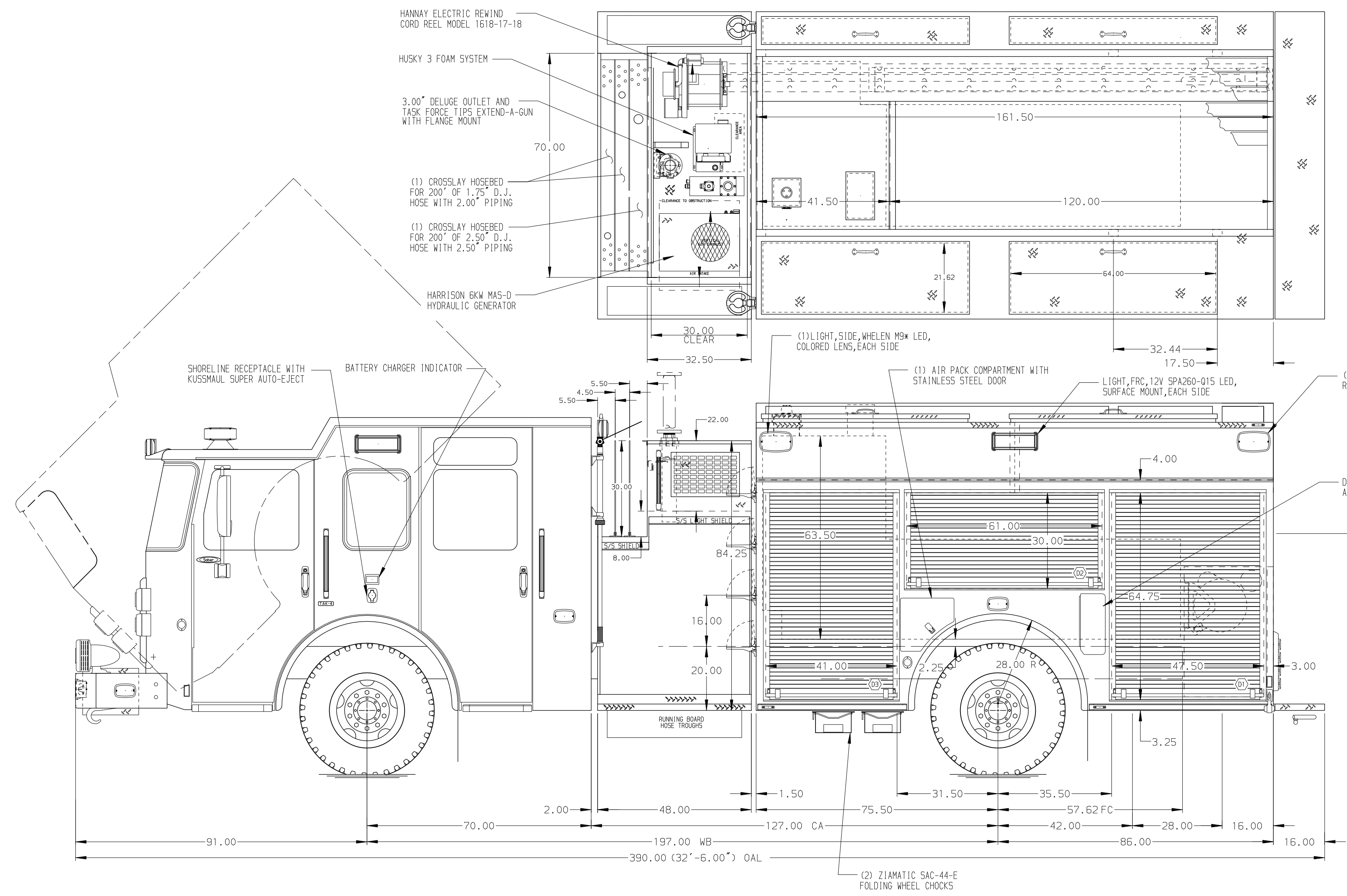


- HOSEBED CAPACITIES
- ① 200' OF 3.00" D.J. POLY HOSE
 - ② 400' OF 3.00" D.J. POLY HOSE
 - ③ 1300' OF 5.00" D.J. POLY HOSE



ALUMINUM BODY MAXIMUM O.A.H. 122.00"

NOTE
DIMENSIONS SHOWN ARE APPROXIMATE AND ARE SUBJECT TO MINOR DEVIATIONS AS MAY OCCUR OR BE NECESSARY IN CONSTRUCTION. MINOR DETAILS NOT SHOWN.

REV	DATE	BY	CH	SABER FR
23NOV15	JLA	RWI		CHASSIS DATA
13OCT15	JLA	VMO		MAKE
21SEP15	TES	CSH		PIERCE
01SEP15	TES	CSH		MODEL

		JOB NO.	29436
		SCALE	DATE
TITLE	1500-D-750P 25G FOAM 161" BODY, FH&D DS, FDLER PS LADDERS NEXT TO TANK, 3 XLAYS, DELUGE, GENERATOR	DRAWN BY	TES
FOR	WILLIAM PENN FIRE COMPANY HULMEVILLE, PENNSYLVANIA	CHECKED BY	MGE
DWG NO.	29436AD	SHEET SIZE	D
		SHEET NO.	1 OF 1