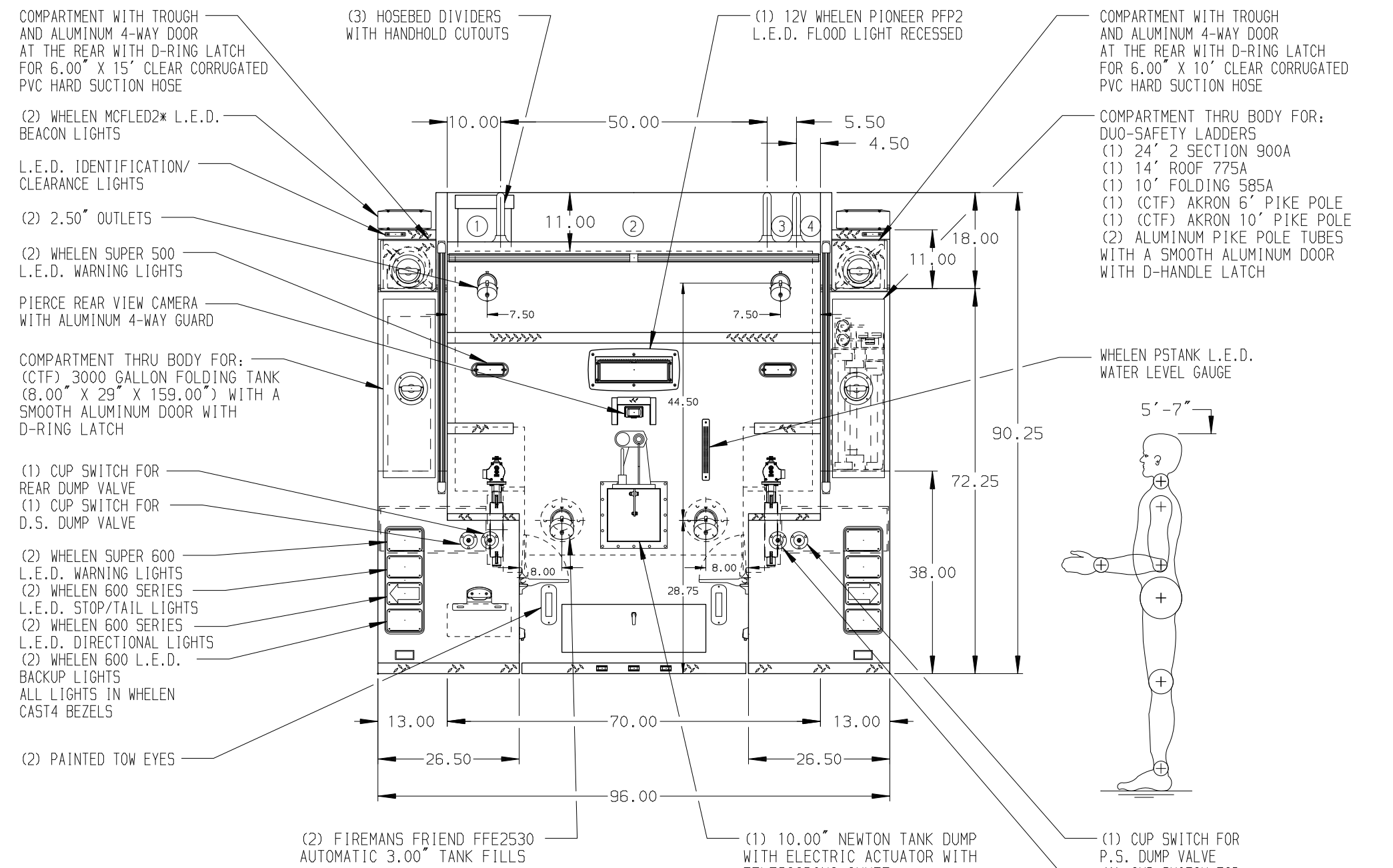
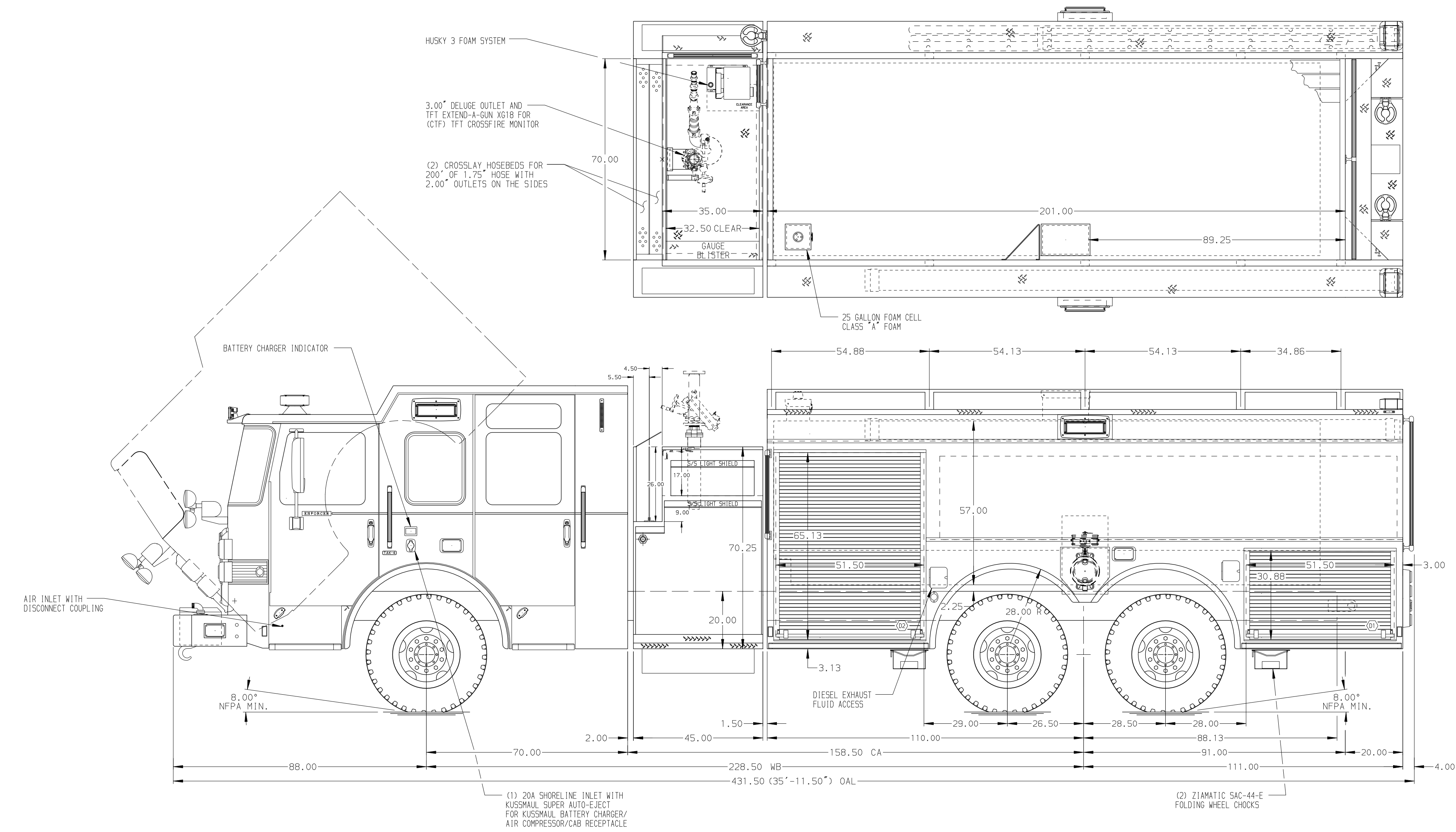


- HOSEBED CAPACITIES
- 150' OF 2.50" D.J. HOSE
 - 1000' OF 5.00" D.J. HOSE
 - 200' OF 1.75" D.J. HOSE
 - 200' OF 1.75" D.J. HOSE



ALUMINUM BODY MAXIMUM O.A.L. 431.50" MAXIMUM O.A.H. 114.00" SIDE ROLL AND FRONTAL IMPACT PROTECTION

NOTE
DIMENSIONS SHOWN ARE APPROXIMATE AND ARE SUBJECT TO MINOR DEVIATIONS AS MAY OCCUR OR BE NECESSARY IN CONSTRUCTION.
MINOR DETAILS NOT SHOWN.

1. PUMP PANEL DRAWING REQUIRED.
2. ONSPOT AUTOMATIC FIRE CHAINS TO BE PROVIDED AT REAR
3. 5/STL SCUFFPLATE ON EACH CAB DOOR JAMB
4. MOUNTING BASES FOR ANTENNAS LOCATED PER SHOP ORDER
5. KUSSMAUL PUMP PLUS 1200 BATTERY CHARGER/AIR COMPRESSOR LOCATED BEHIND DRIVER SEAT
6. PERIMETER SCENE LIGHTS LOCATED PER SHOP ORDER
7. ONE 12V L.E.D. LIGHT STRIP LOCATED ON EACH SIDE IN THE HOSEBED
8. 5/STL SCUFFPLATE ON REAR OUTER CORNER OF BODY
9. PIERCE L.E.D. DUAL COMPARTMENT LIGHT STRIPS LOCATED PER SHOP ORDER
10. STAINLESS STEEL FENDER CROWNS FRONT AND REAR

11. PAINTED SHELF TRACKS LOCATED IN COMPARTMENTS D1, D2, P1 & P2
12. ONE FULL WIDTH/DEPTH PAINTED ADJUSTABLE SHELF IN COMPARTMENT P2; TWO IN D2
13. STORAGE RACK FOR (4) AIR BOTTLES IN COMPARTMENTS D1 & P1
14. ALL FOLDING STEPS TO BE TRIDENT WITH INTEGRATED L.E.D. LIGHT UNLESS SPECIFIED
15. 5/STL DRIP PAN GUARD FOR ROLL UP DOOR LOCATED IN D1, D2, P1 & P2
16. PAINTED ALUMINUM PEGBOARD WITH TRACK ON REAR TANK WALL OF COMPARTMENT D2
17. STORAGE RACK FOR (4) AIR BOTTLES IN COMPARTMENTS D1 & P1
18. ONE 20A, 120V DUPLEX RECEPTACLE BEHIND OFFICER'S SEAT

REV	DATE	BY	CH	ENFORCER
17AUG15	NPA	DTs	MAKE	
15JUL15	NPA	DTs	PIERCE	
11JUN15	NPA	CSH	MODEL	

Pierce MANUFACTURING INC.		JOB NO.	28992
		SCALE	1:24
		DATE	
		DRAWN BY	NPA
		CHECKED BY	CSH
		SHEET SIZE	D
		SHEET NO.	1 OF 1

TITLE 1500-D-2500P W/25 GAL FOAM, 221" FH FRT, LOW REAR SIDE CONTROL, (2) XLAYS, LADDERS THRU BODY, DELUGE
FOR MARYSVILLE FIRE COMPANY
MARYSVILLE, PENNSYLVANIA
DWG NO. 28992AD