

COMPARTMENT P1 CONTAINS:

- (4) STD DEPTH ADJ SLIDE OUT TOOLBOARDS
WITH PAC TRAC
- (1) OIL DRY HOPPER
- (3) VERTICAL COMPARTMENT DIVIDERS
- (3) FLAT TOP SHELVES

-

-

COMPARTMENT P2 CONTAINS:

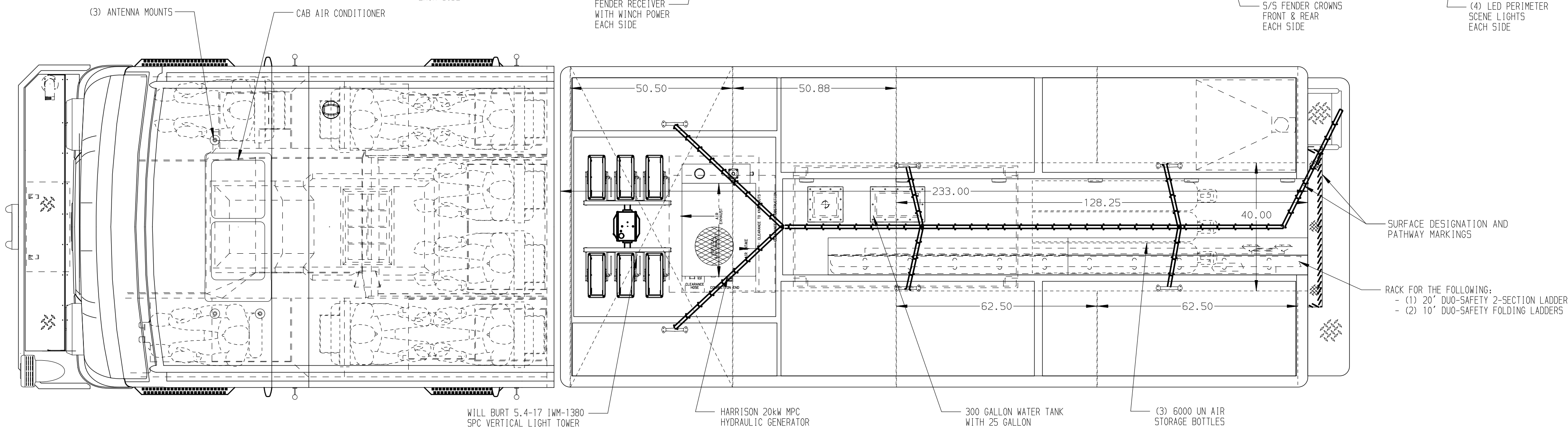
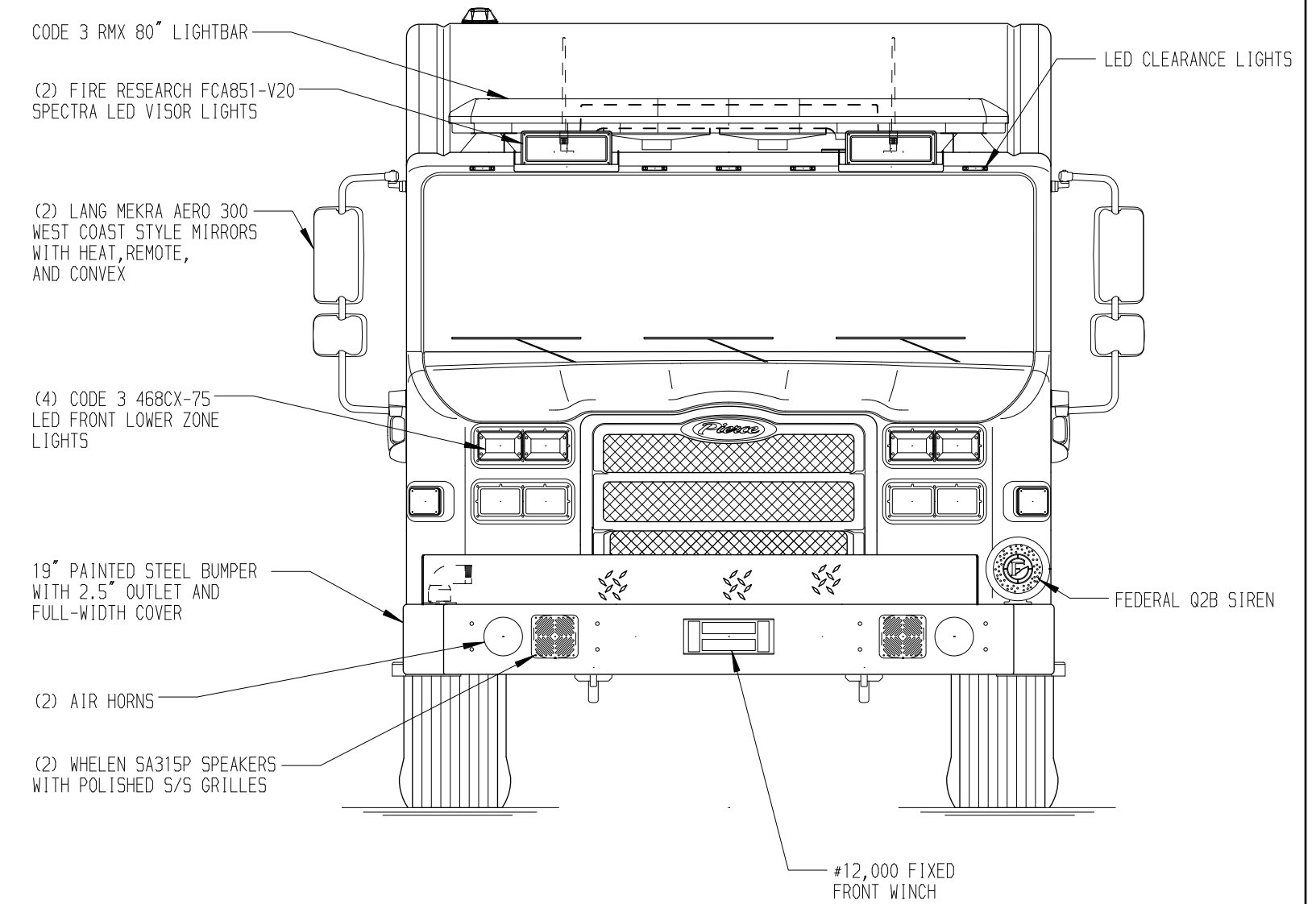
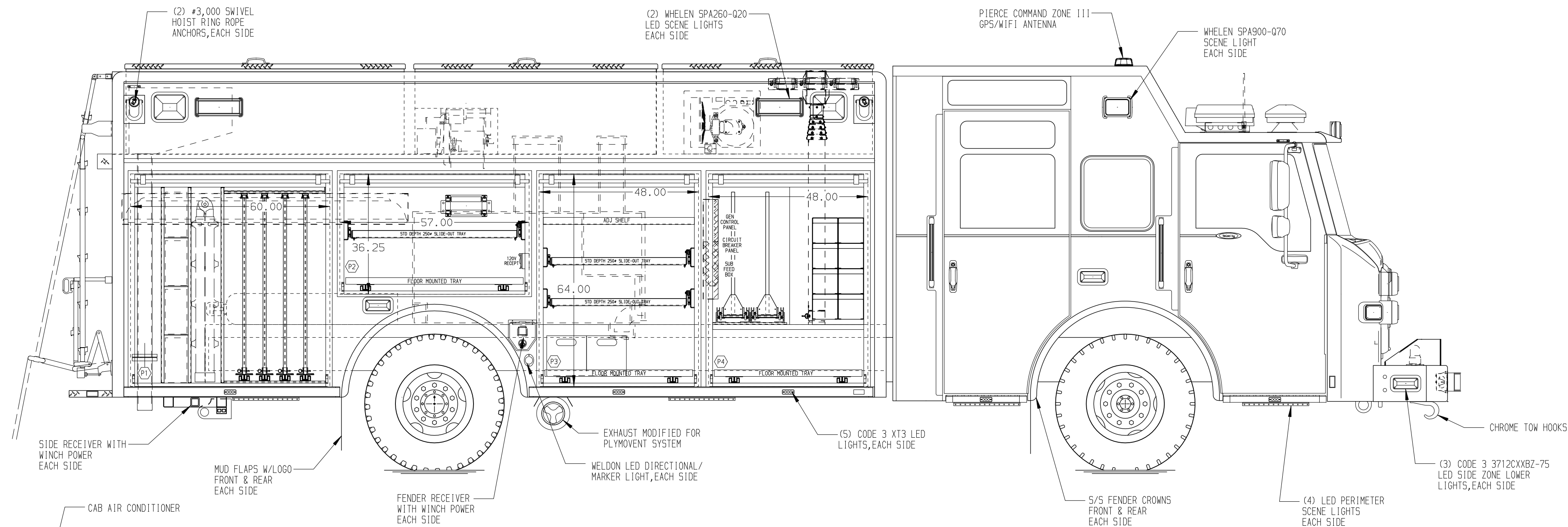
- (1) STD DEPTH ADJ SLIDE OUT TRAY
- (1) STD DEPTH FLOOR MOUNTED TRAY
- (1) 200A, 120V DUPLEX RECEPTACLE
- (1) ELECTRIC CORD REEL WITH
200' OF 10/4 YELLOW CORD

COMPARTMENT P3 CONTAINS:

- (1) STD DEPTH ADJ SLIDE OUT SHELF
- (2) STD DEPTH ADJ SLIDE OUT TRAYS
- (1) STD DEPTH FLOOR MOUNTED TRAY
- (2) POLY TOOL BOXES

-

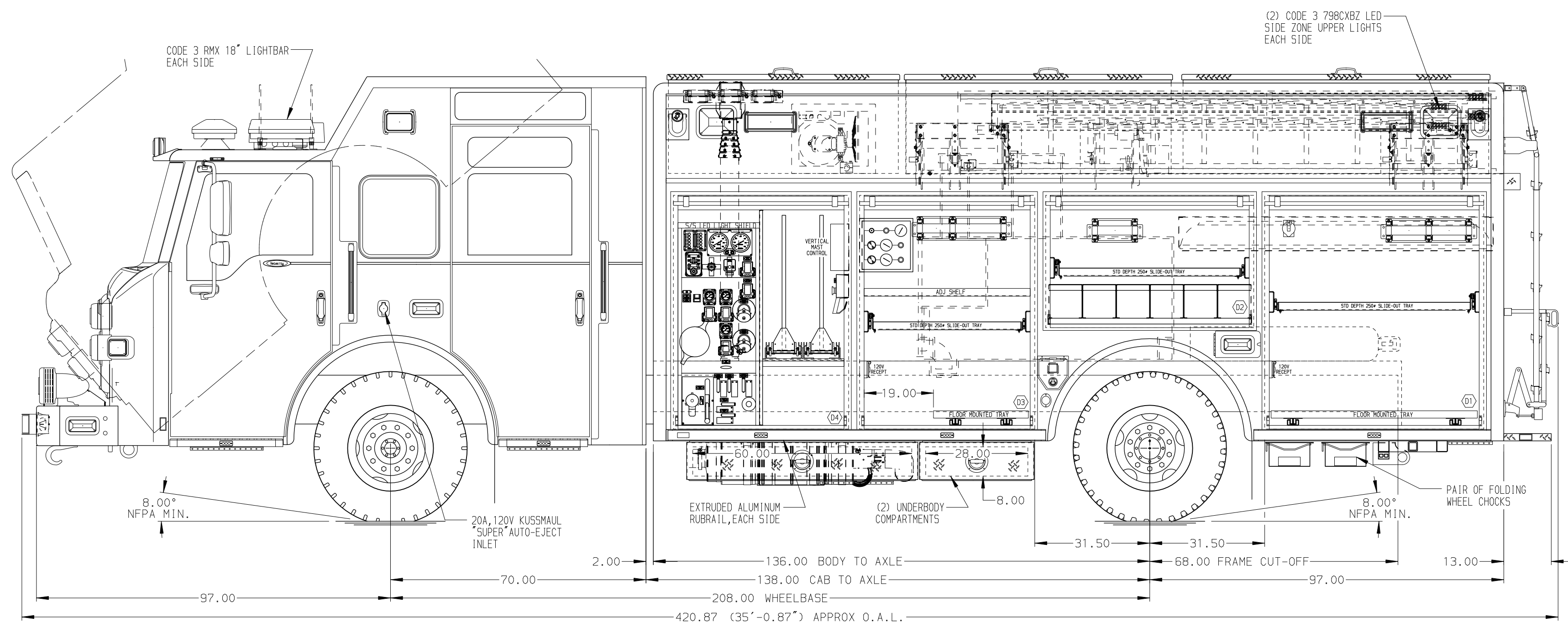
-



REAR COMPARTMENT CONTAINS
THE FOLLOWING:

COMPARTMENT R1 CONTAINS:

- (1) STOKES BASKET RACK
-
-
-
-



COMPARTMENT D1 CONTAINS:

- (1) STD DEPTH FLOOR MOUNTED TRAY
- (1) STD DEPTH ADJ SLIDE OUT TRAY
- (1) 20A,120V DUAL RECEPTACLE
- (1) DUAL HYDRAULIC REEL W/100' OF HOSE ON EACH
- (1) 30A,240V T.L. RECEPTACLE WITH SWITCH

-

COMPARTMENT D2 CONTAINS:

- (1) RACK FOR 6 EXTINGUISHERS
- (1) STD DEPTH ADJ SLIDE OUT TRAY
- (1) ELECTRIC CORD REEL WITH 200' OF 10/14 YELLOW CORD

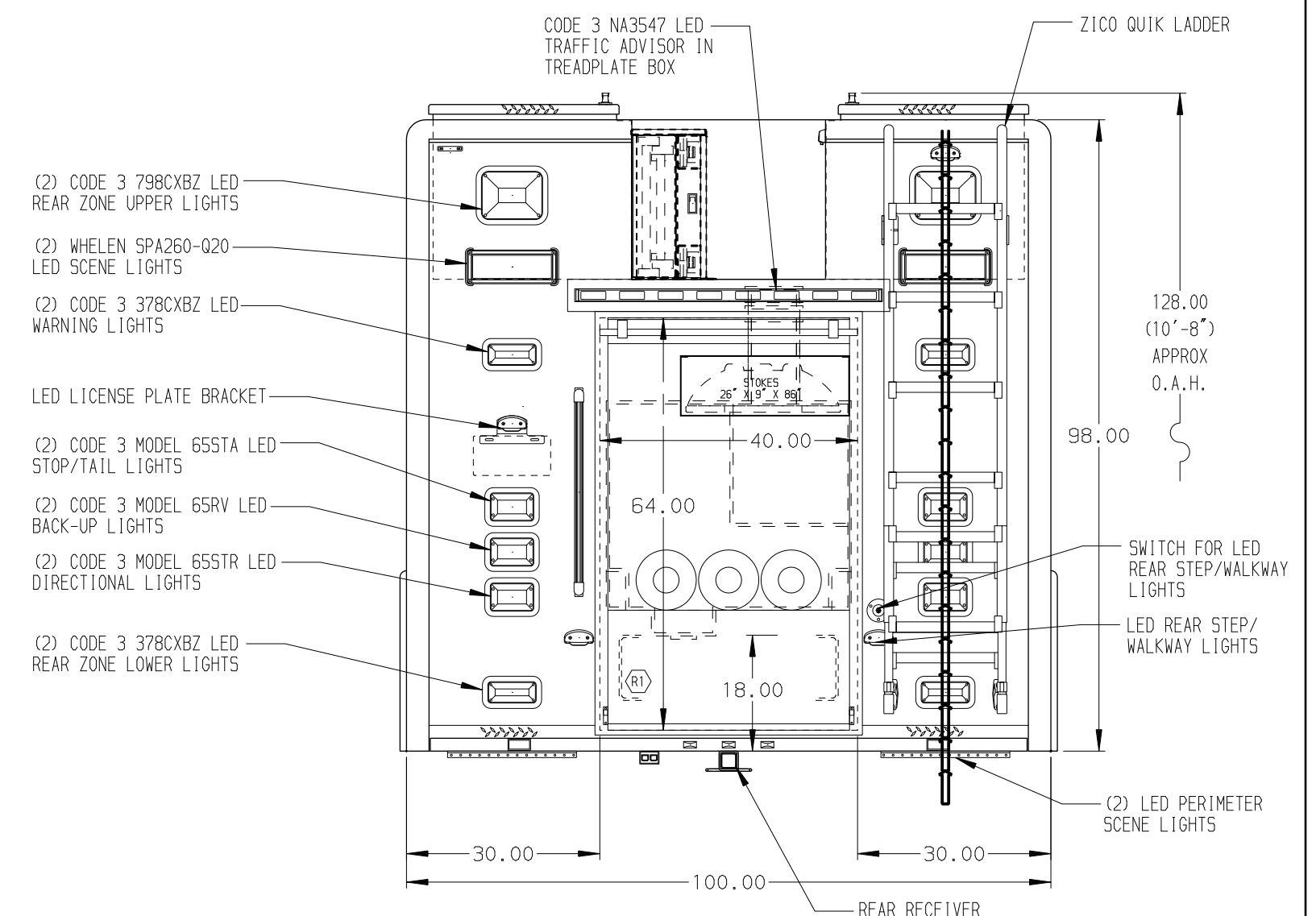
-


COMPARTMENT D3 CONTAINS:

- (1) STD DEPTH ADJ SLIDE OUT TRAY
- (1) STD DEPTH FLOOR MOUNTED TRAY
- (1) STD DEPTH ADJ SHELF
- (1) 20A,120V DUPLEX RECEPTACLE
- (1) DUAL AIR REEL WITH 200' OF LOW AND HIGH PRESSURE HOSE
- (1) TOOL AIR SYSTEM CONTROL PANEL WITH PAC TRAC

COMPARTMENT D4 CONTAINS:

- (1) HORIZONTAL EXTENSION
- (1) VERTICAL COMPARTMENT DIVIDER
- (2) 2-WAY ADJ SLIDE OUT TOOLBOARDS WITH PAC TRAC



| | | | |
|---|---|---------------|---------------------|
|  MANUFACTURING INC. | | JOB NO. | 30524 |
| | | SCALE 1:24 | DATE |
| TITLE | HEAVY DUTY RESCUE NON-WALKIN WITH 300 GALLON WATER AND 25 FOAM | | DRAWN BY DHE |
| FOR | BELMONT HILLS FIRE COMPANY BELMONT HILLS, PA | | CHECKED BY AZU |
| DWG NO. | 30524AD | | SHEET SIZE D |
| | RALPH REHRIG | | SHEET NO. 1 OF 1 |

NOTE
DIMENSIONS SHOWN ARE APPROXIMATE
AND ARE SUBJECT TO MINOR DEVIATIONS
AS MAY OCCUR OR BE NECESSARY IN
CONSTRUCTION.
MINOR DETAILS NOT SHOWN.



NOTES:

| | |
|---|---|
| 1. ONSPOT AUTOMATIC TIRE CHAINS | 10. HALE MG-75 750 GPM WATER PUMP LOCATED BETWEEN THE FRAME RAILS |
| 2. AIR INLET WITH DISCONNECT COUPLING LOCATED IN DRIVER'S SIDE LOWER STEP WELL OF CAB | |
| 3. POLISHED 5/5 SCUFFPLATE ON CAB DOOR JAMBS AND BEHIND HANDRAILS | |
| 4. 5/5 SCUFFPLATE ON REAR CAB CORNERS | |
| 5. FLOOR IN CAB AND CREW CAB TO BE PADDED RUBBER | |
| 6. KUSSMAUL PUMP PLUS 1200 CHARGER LOCATED BEHIND DRIVER'S SEAT | |
| 7. BATTERY CHARGE INDICATOR LOCATED ON DRIVER'S SEAT RISER WITH BRACKET | |
| 8. "L"-SHAPED 5/5 GUARDS ON ALL BODY ROLL-UP DOORS | |
| 9. ROM DUAL LED LIGHT STRIPS IN ALL BODY COMPARTMENTS | |

(SIDE ROLL AND F

MAXIMUM O.A.H. 10'-8"
MAXIMUM O.A.L. 35'-0"

(SIDE ROLL AND FRONTAL IMPACT PROTECTION)

| | | | | | |
|---|---------|---|---------|------|--------------|
| CLEAR DOOR WIDTH KEY | | | | | CHASSIS DATA |
| AMDR ROLL UP DOORS: | -1 7/8" | | | | MAKE |
| GORTITE ROLL UP DOORS: | -2 3/4" | | 24APR17 | DHE | CDK |
| PIERCE DOUBLE LAP DOORS: | -4 1/4" |  | 03MAR17 | DHE | CDK |
| PIERCE LIFT-UP LAP DOORS: | -1 1/2" |  | 26JAN17 | DHE | CDK |
| (EX: 60" F - 1 7/8" = 58 1/8" CLEAR) (F") = FRAME TO FRAME | | | REV | DATE | BY CH |
| | | | | | VXFR7020 |