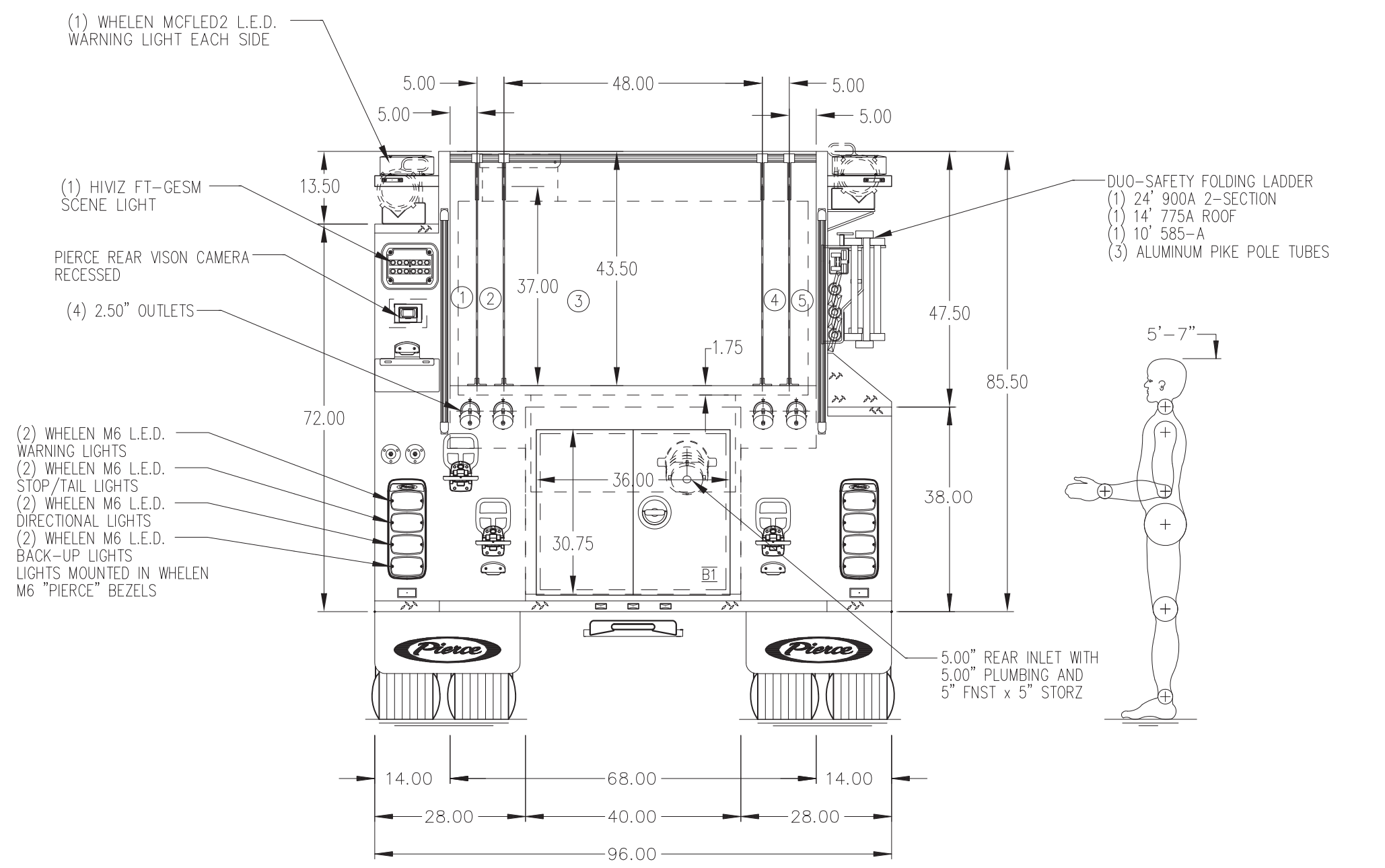
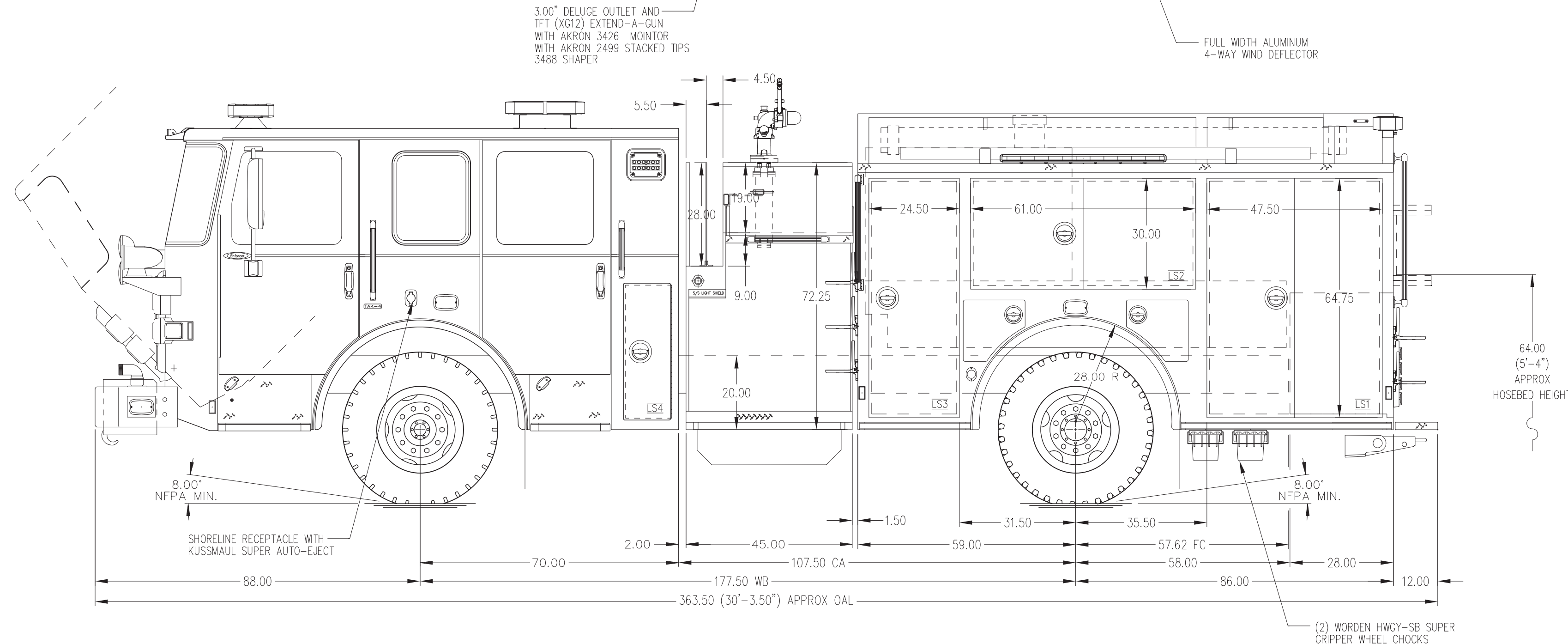


- HOSEBED CAPACITIES
- ① 250' OF 2.50" PRE-CONNECT
 - ② 300' OF 1.75" PRE-CONNECT
 - ③ 1500' OF 5.00" DEADLAY
 - ④ 200' OF 1.75" PRE-CONNECT
 - ⑤ 250' OF 2.50" PRE-CONNECT



ALUMINUM BODY

SIDE ROLL AND FRONTAL IMPACT PROTECTION

NOTE
DIMENSIONS SHOWN ARE APPROXIMATE AND ARE SUBJECT TO MINOR DEVIATIONS AS MAY OCCUR OR BE NECESSARY IN CONSTRUCTION. MINOR DETAILS NOT SHOWN.

REV	DATE	BY	CH	ENFORCER

	MANUFACTURING INC.		PROPOSAL	776
			SCALE	DATE
TITLE		1500-D-750 GAL POLY, 145" PUMPER BODY		
MAKE		(2) XLAYS, LADDERS ON PS		
FOR		GLICK FIRE EQUIPMENT COMPANY, INC		DRAWN BY
MODEL		BIRD-IN-HAND, PA		KRG
DWG NO.		PRELIMINARY PRINT ONLY		CHECKED BY
				N/A
				SHEET SIZE
				D
				SHEET NO.
				1 OF 1