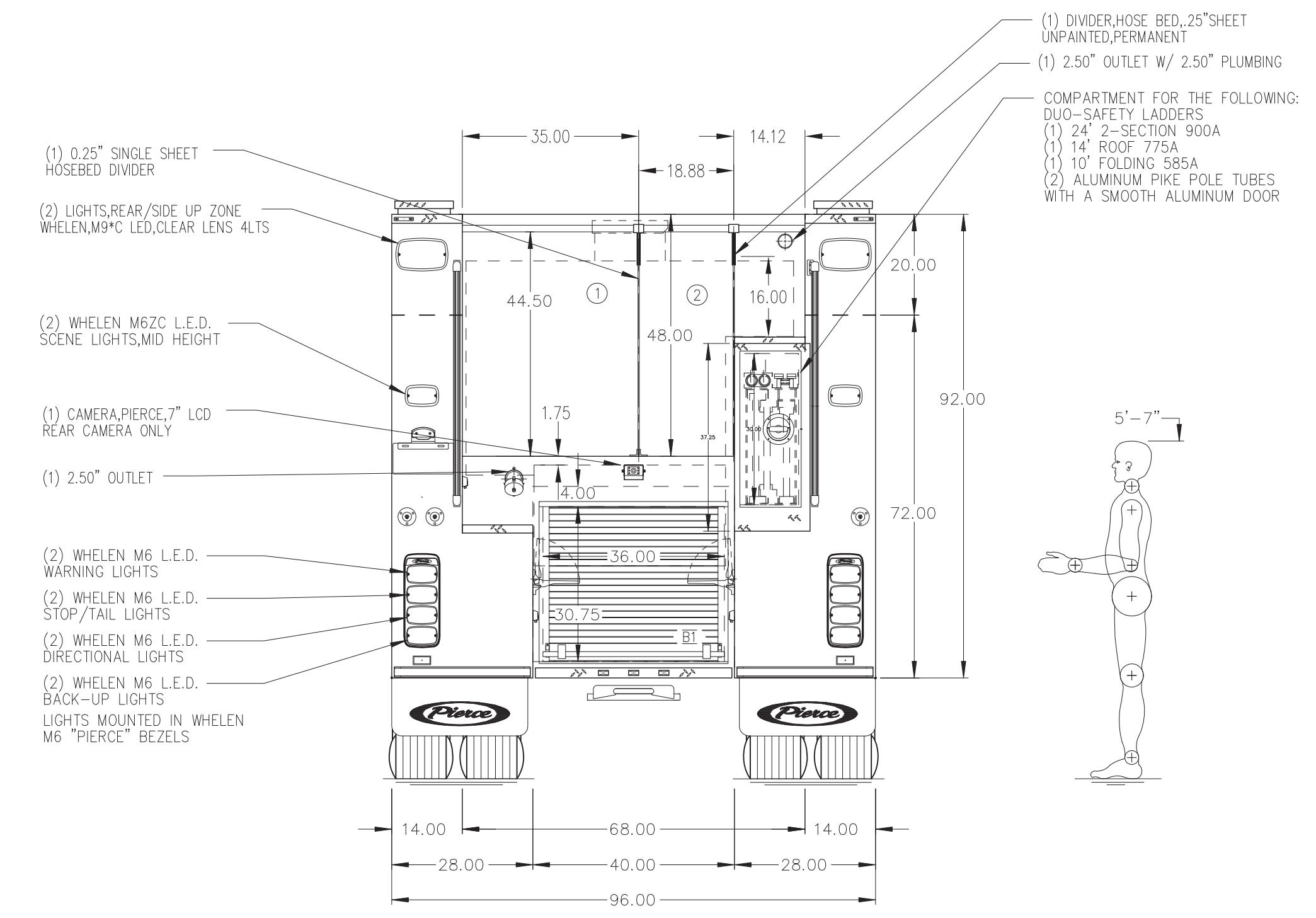


HOSEBED CAPACITIES

① 1000' OF 5.00" D.J. POLY HOSE

② 500' OF 2.50" D.J. POLY HOSE



ALUMINUM BODY

NOTE
DIMENSIONS SHOWN ARE APPROXIMATE AND ARE SUBJECT TO MINOR DEVIATIONS AS MAY OCCUR OR BE NECESSARY IN CONSTRUCTION. MINOR DETAILS NOT SHOWN.

CHASSIS DATA	TITLE	1500-D-750P, 725G WATER 25G FOAM, 152" NEW YORK STYLE PUMPER, (3) CROSSLAYS, 45" PUMPHOUSE, DELUGE
MAKE	FOR	GLICK FIRE EQUIPMENT COMPANY, INC (BID #767)
PIERCE		BIRD-IN-HAND, PA
MODEL	DWG NO.	37987AD
REV	DATE	BY
CH	SABER FR	

<p>MANUFACTURING INC. BRADENTON, FLORIDA</p>		JOB NO.	37987
SCALE	1:24	DATE	
DRAWN BY	KRG	CHECKED BY	-
SHEET SIZE	D	SHEET NO.	1 OF 1