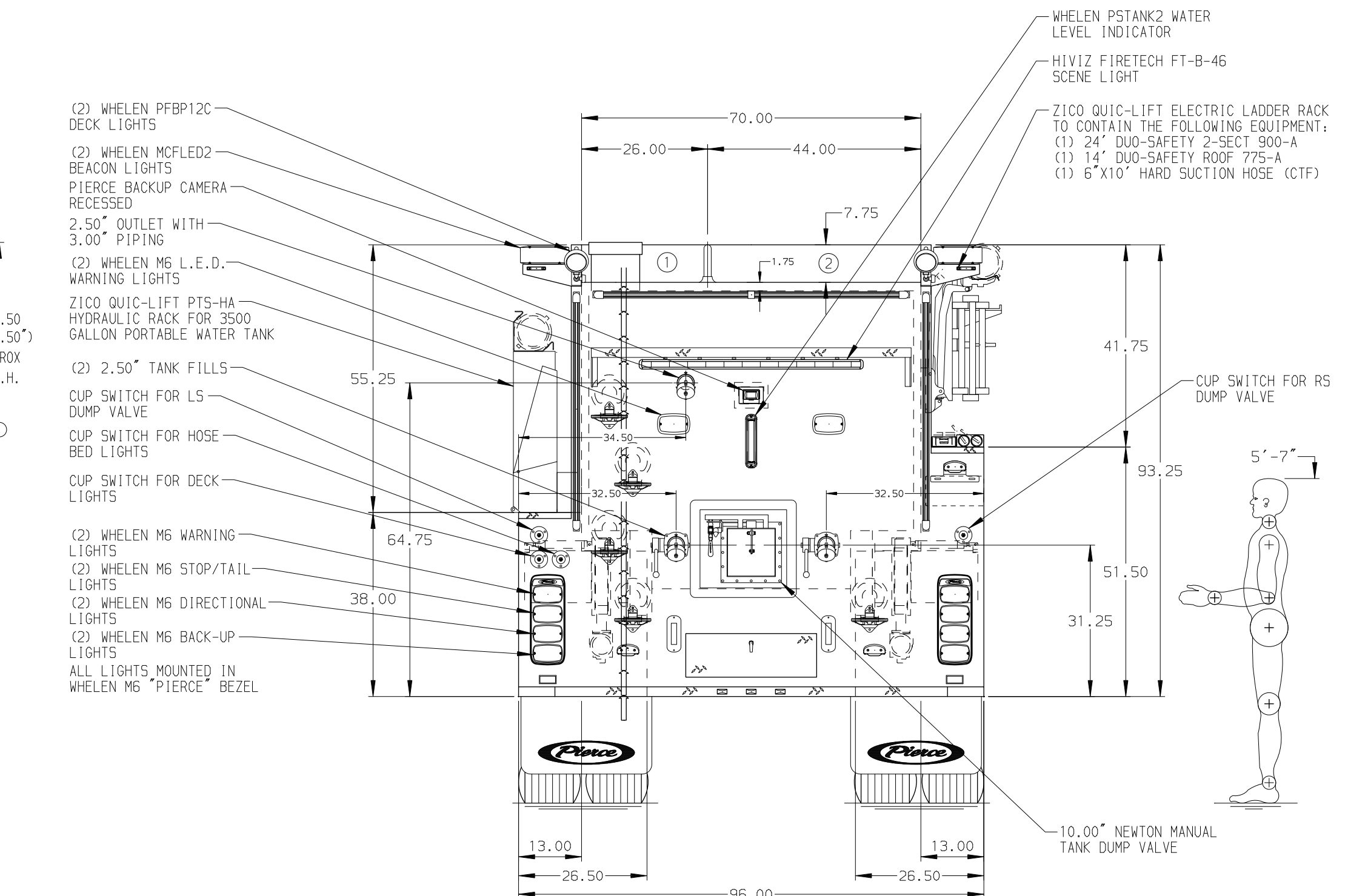
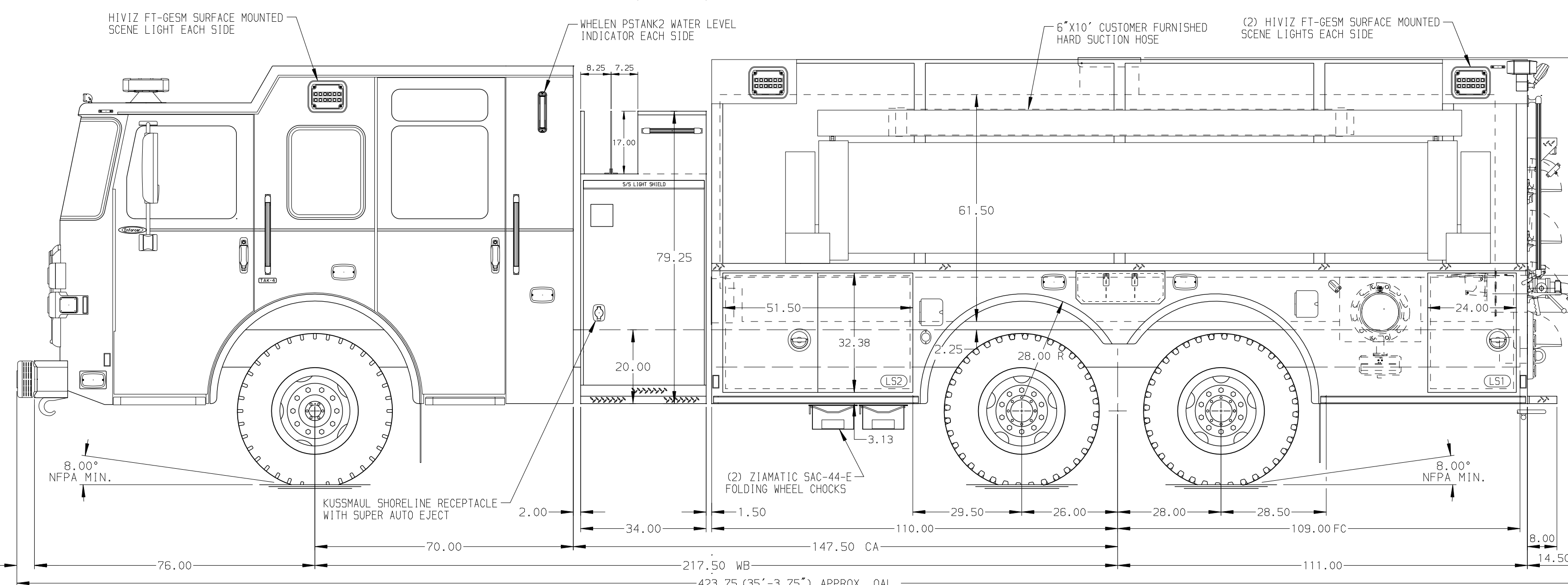


HOSEBED CAPACITIES
 ① 400' OF 2.50" D.J. POLY HOSE
 ② 800' OF 5.00" D.J. POLY HOSE



ALUMINUM BODY MAXIMUM O.A.H. 114.50" TARGET O.A.L. 414.00" SIDE ROLL AND FRONTAL IMPACT PROTECTION

NOTE
 DIMENSIONS SHOWN ARE APPROXIMATE AND ARE SUBJECT TO MINOR DEVIATIONS AS MAY OCCUR OR BE NECESSARY IN CONSTRUCTION. MINOR DETAILS NOT SHOWN.

- THREE P25 WALKING SURFACE LIGHTS LOCATED IN THE CARGO AREA PER OPTION LIST
- ONSPOT TIRE CHAINS PROVIDED AT THE REAR PER OPTION LIST
- BATTERY CHARGER LOCATED PER OPTION LIST
- BATTERY CHARGER INDICATOR LOCATED PER OPTION LIST
- FOUR 120V DUPLEX RECEPTACLES LOCATED PER OPTION LIST

CUSTOMER APPROVAL			
APPROVED BY:			
DATE:			
REV	DATE	BY	CH

		JOB NO.	36845
		SCALE	1:24
TITLE	1250-D-3000P, 221" TANKER BODY, DELUGE	DRAWN BY	BST
MAKE	ZICO LADDER RACK, REAR/SIDE DUMPS, (2) CROSSLAYS	CHECKED BY	CDU
FOR	EARL TOWNSHIP FIRE COMPANY	SHEET SIZE	D
PIERCE	BOYERTOWN, PA	SHEET NO.	1 OF 1
MODEL		36845AD	
DWG NO.			