

**PUMPER
BODY**

Long Aluminum 2nd Gen Pumper

CHASSIS

Enforcer Chassis

**CHASSIS
AXLE, FRONT, CUSTOM**

18,000 Lb TAK-4 Axle

AXLE, REAR

24,000 Lb Dana Axle

ENGINE

450 HP Cummins L9 Engine

TRANSMISSION

Allison 5th Gen, 3000 EVS P

BUMPER

10" Extended Stainless Steel

CAB

6010 Enforcer Cab

**BODY
WATER TANK**

500 Gallon New York Style Water Tank

COMPT, PUMPER, REAR

30.75" FF RollUp Rear Compt

COMPT, PUMPER, LEFT SIDE

161" Lop Full Height & Depth Front & Rear

COMPT, PUMPER, RIGHT SIDE

161" Lop Full Height & Depth Front & Rear

**FIRE SUPPRESSION
PUMPHOUSE**

45" Control Zone Side Mount

PUMP

1500 GPM Waterous CSU

CROSSLAYS, 1.50"

(2) 1.50" Standard Capacity

CROSSLAYS, 2.50"

2.50" Crosslay Not Required

SPEEDLAYS

Speedlays Not Required

GENERATOR

Generator Not Required

Foam System

Foam System Not Required

Foam Cell

Foam Cell Not Required

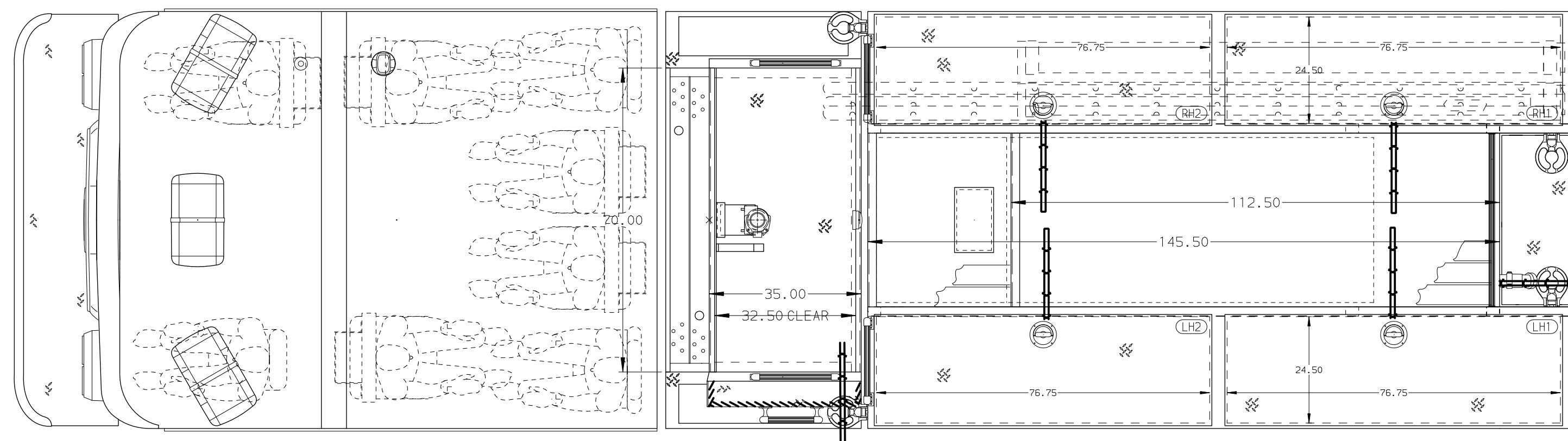
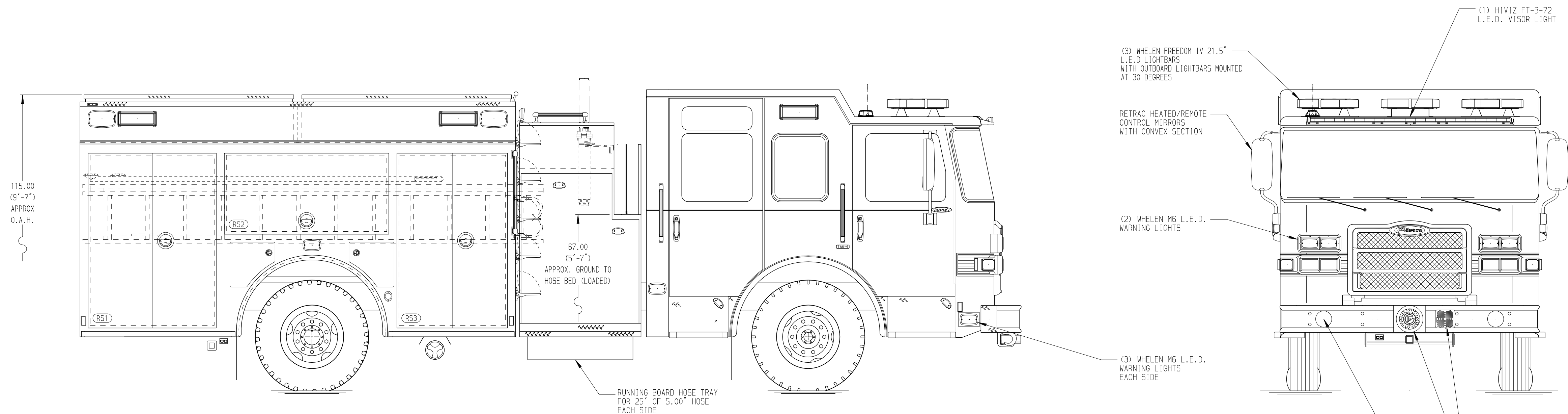
Side Roll and Frontal Impact Protection

MAXIMUM O.A.H. 115.00"

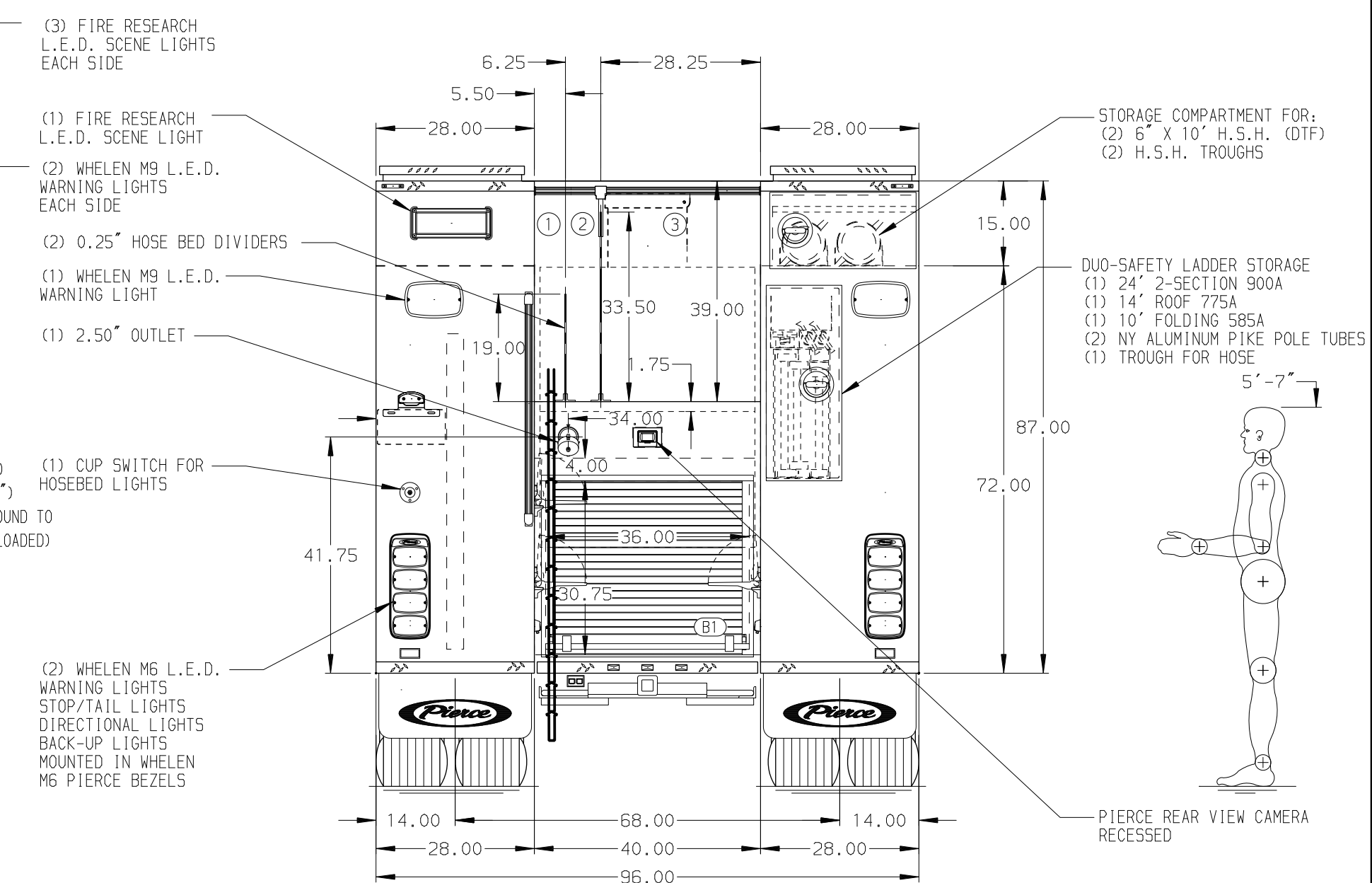
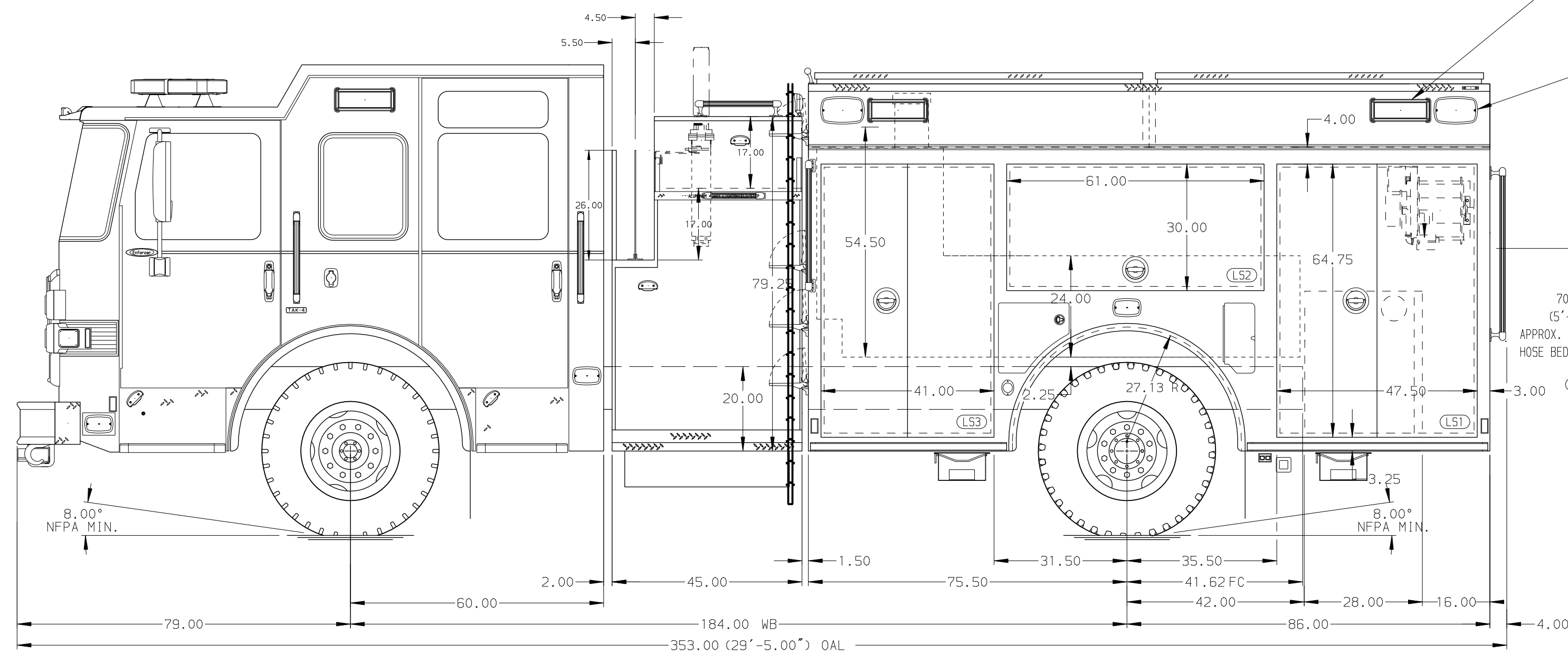
NOTE
DIMENSIONS SHOWN ARE APPROXIMATE AND ARE SUBJECT TO MINOR DEVIATIONS AS MAY OCCUR OR BE NECESSARY IN CONSTRUCTION. MINOR DETAILS NOT SHOWN.

- SHORELINE RECEPTACLE WITH KUSSMAUL SUPER AUTO-EJECT LOCATED ON DRIVER SIDE OF THE CAB
- AIR INLET WITH DISCONNECT COUPLING IN THE DRIVER SIDE STEPIWELL
- BATTERY CHARGER LOCATED BEHIND DRIVER SEAT
- BATTERY CHARGE INDICATOR LOCATED ON THE DRIVER SIDE SEAT RISER
- SIX ADJUSTABLE SHELVES IN COMPARTMENTS PER SHOP ORDER
- TWO FLOOR MOUNTED SLIDE-OUT TRAY IN COMPARTMENT PER SHOP ORDER
- ONE SLIDE-OUT TRAYS IN COMPARTMENT PER SHOP ORDER
- TWO TILT/SLIDE-OUT TRAYS IN COMPARTMENT PER SHOP ORDER
- ONE SLIDE-OUT TOOLBOARD IN COMPARTMENT PER SHOP ORDER
- ONE VERTICAL PARTITION IN COMPARTMENT PER SHOP ORDER

- MOUNTING PLATE IN COMPARTMENT PER SHOP ORDER
- TWO HANNAY CABLE REELS (E1618-17-16) WITH 200' OF 10/3 CABLE LOCATED IN LS3 HIGH (PROVISIONS ONLY)



HOSEBED CAPACITY	
BED 1	200' OF 2.50" D.J. POLY HOSE
BED 2	200' OF 3.00" D.J. POLY HOSE
BED 3	1200' OF 5.00" D.J. POLY HOSE



		JOB NO.	36771
		SCALE	DATE
TITLE	Pierce Pumper Approval Drawing	DRAWN BY	MMF
FOR	Derry Volunteer Fire Company	CHECKED BY	COL
DWG NO.	36771AD	SHEET SIZE	SHEET NO.
		D	1 OF 1

REV	DATE	BY	CH	ENFORCER
30JUN22	MMF	COS		CHASSIS DATA
18FEB22	MMF	COS		MAKE
29NOV21	MMF	COS		PIERCE
14SEP21	MMF	COL		MODEL