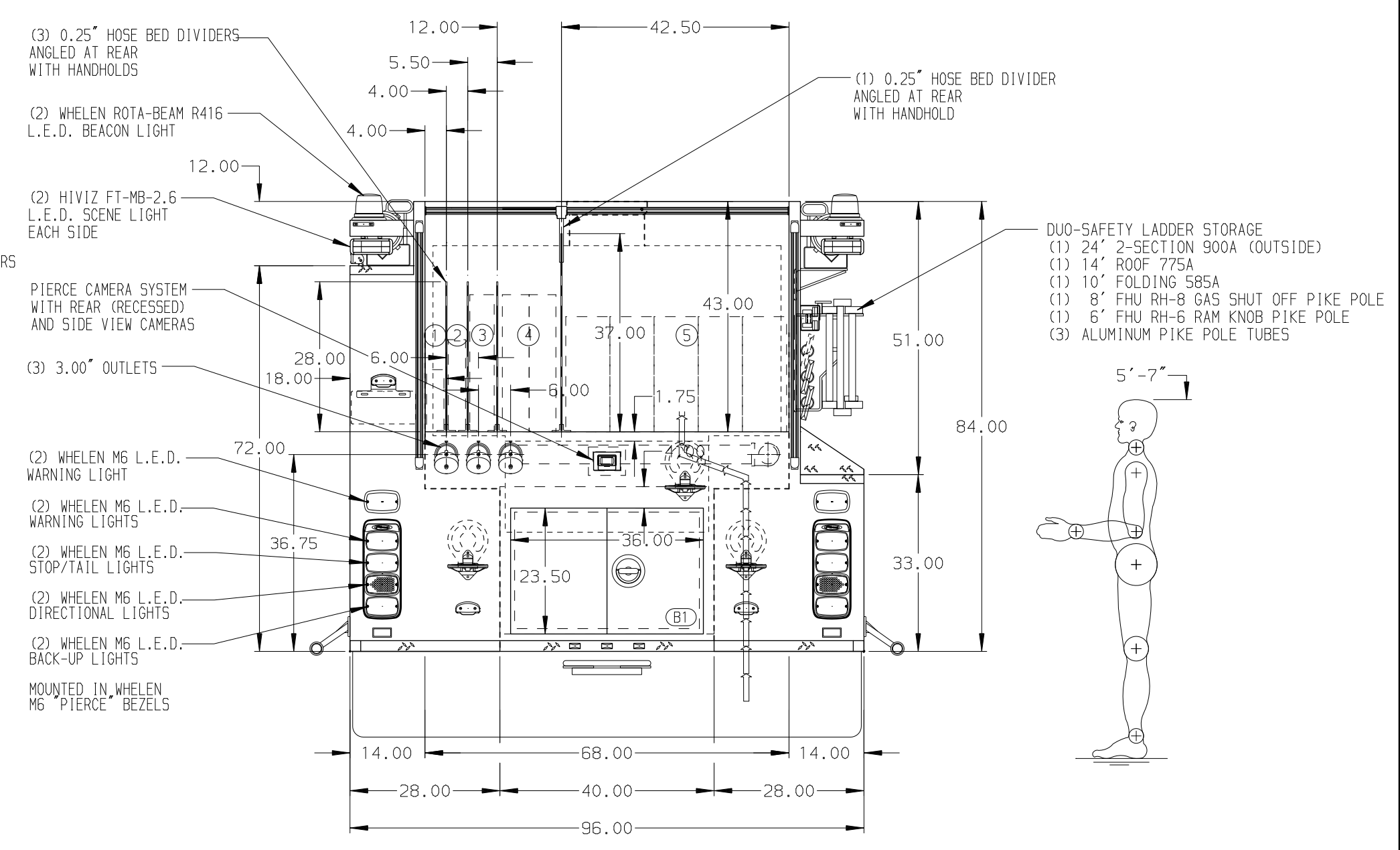
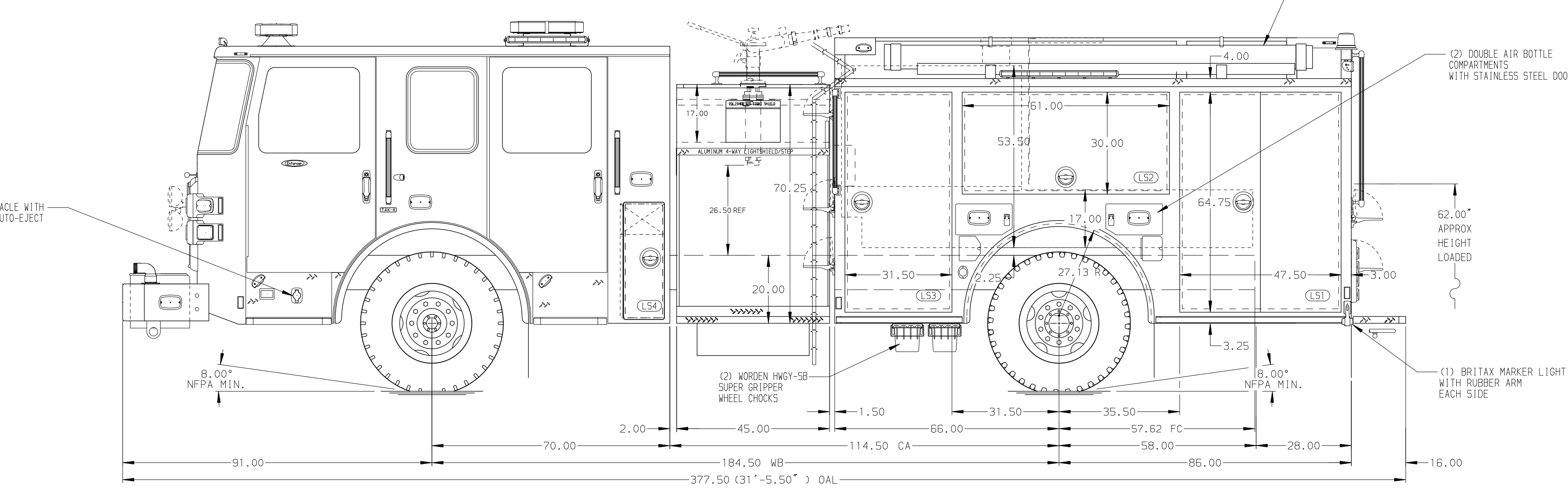


- HOSEBED CAPACITIES**
- ① 200' OF 1.75\"/>



ALUMINUM BODY

MAX OAH = 111"

SIDE ROLL AND FRONTAL IMPACT PROTECTION

NOTE
DIMENSIONS SHOWN ARE APPROXIMATE AND ARE SUBJECT TO MINOR DEVIATIONS AS MAY OCCUR OR BE NECESSARY IN CONSTRUCTION. MINOR DETAILS NOT SHOWN.

- 1. BATTERY CHARGER LOCATED BEHIND DRIVER'S SEAT
- 2. BATTERY CHARGER INDICATOR LOCATED AT DRIVER'S SIDE STEP AREA
- 3. BRUSHED STAINLESS STEEL SCUFFPLATE INSIDE EACH BODY COMPARTMENT DOORS
- 4. 120V DUPLEX RECEPTACLE LOCATED IN COMPARTMENTS R51 AND R52

REV	DATE	BY	CH	ENFORCER
22APR21	SAM	DTS		CHASSIS DATA
04MAR21	SAM	DTS		MAKE
01FEB21	SAM	DTS		PIERCE
05JAN21	SAM	DTS		MODEL
03DEC20	SAM	DTS		

	MANUFACTURING INC.		JOB NO.	35476
			SCALE	DATE
		TITLE	1500-D-750 GAL POLY, 152" FH FDLER LS, LOW FDLER RS LADDER BRACKETS, GENERATOR, DELUGE, BOOSTER REEL	DRAWN BY
		FOR	UPPER DUBLIN TOWNSHIP FORT WASHINGTON, PENNSYLVANIA	CHECKED BY
		DWG NO.	35476AD	SHEET SIZE
				SHEET NO.
				1 OF 1