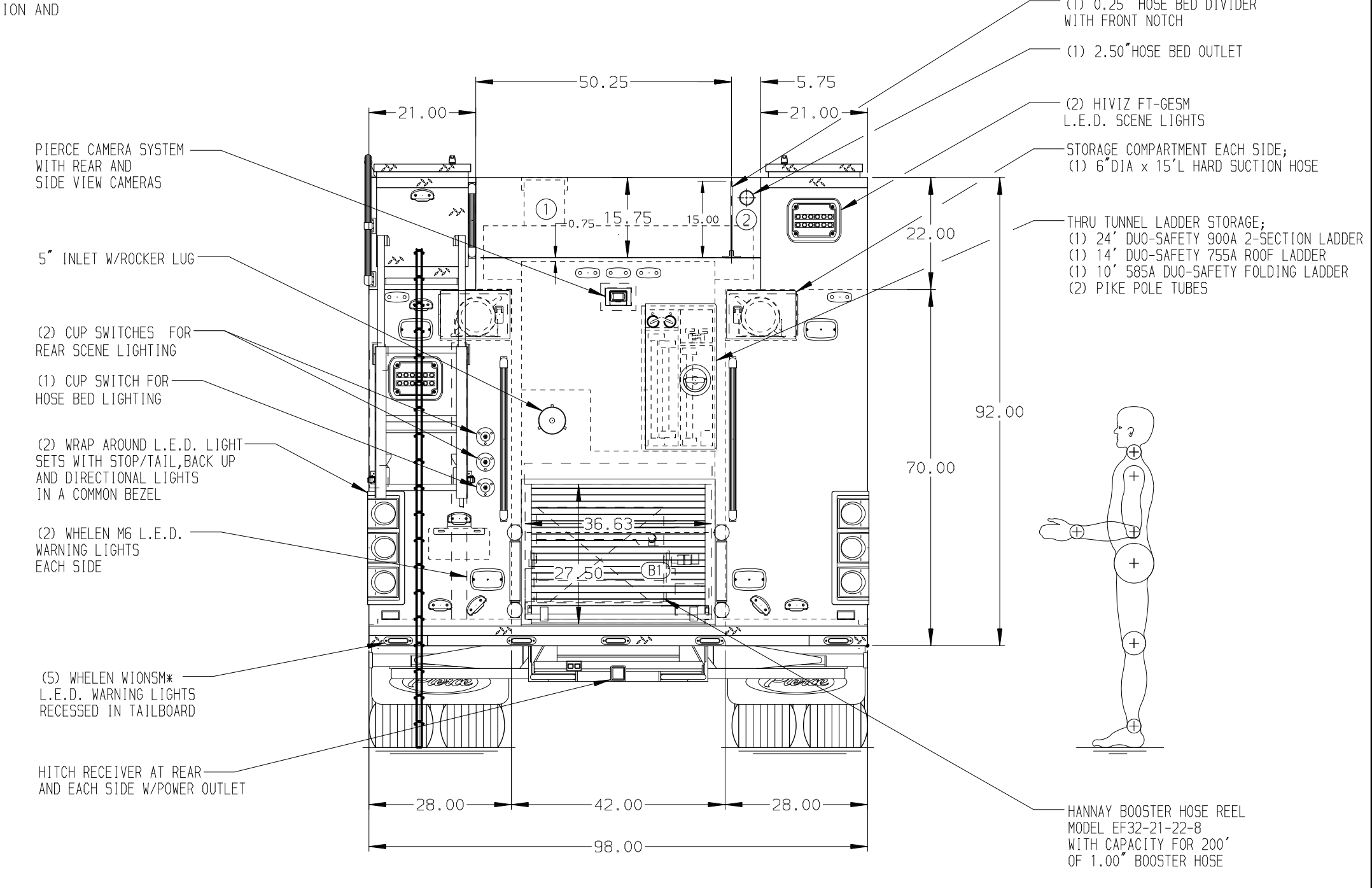
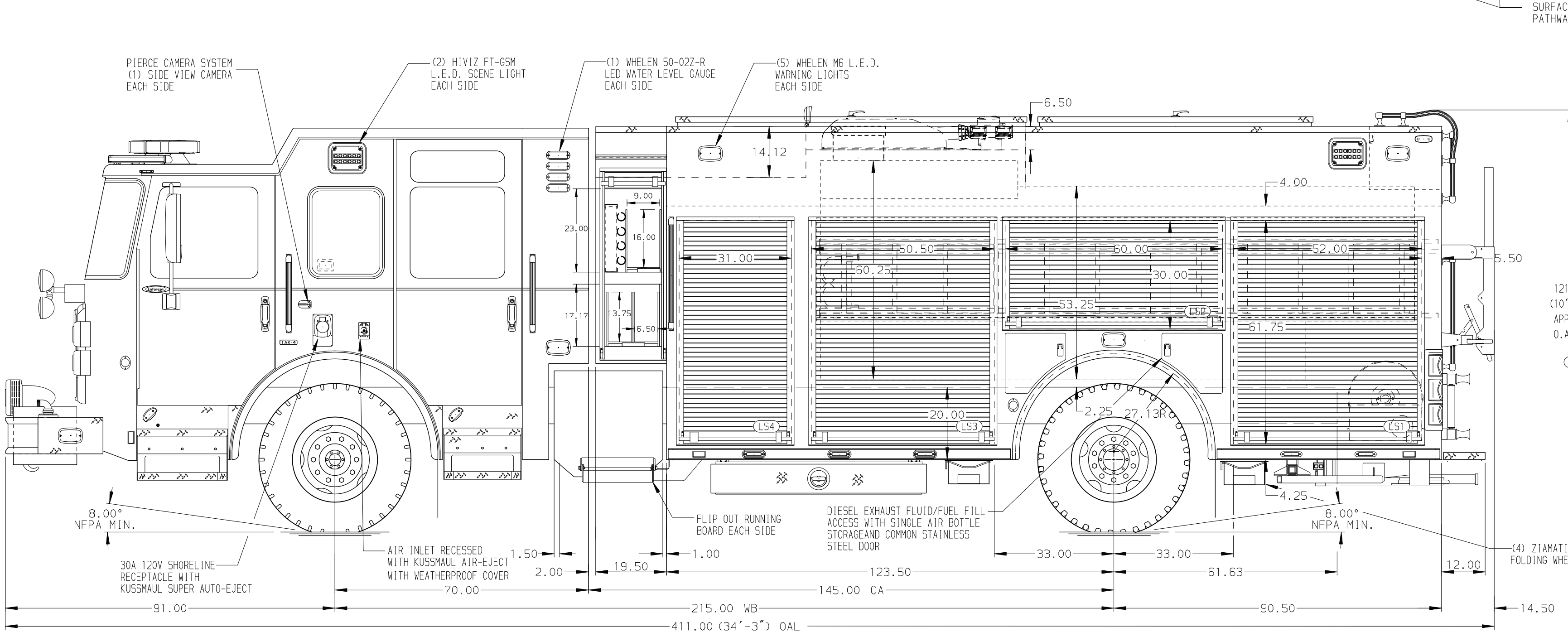


HOSEBED CAPACITIES
 ① 1500' OF 5.00\"/>



ALUMINUM BODY

NOTE
 DIMENSIONS SHOWN ARE APPROXIMATE AND ARE SUBJECT TO MINOR DEVIATIONS AS MAY OCCUR OR BE NECESSARY IN CONSTRUCTION. MINOR DETAILS NOT SHOWN.

- ONSPOT AUTOMATIC TIRE CHAINS TO BE PROVIDED AT REAR
- BATTERY CHARGER LOCATED BEHIND DRIVER SEAT
- BATTERY CHARGER INDICATOR BEHIND DRIVER'S SEAT DISPLAYED THROUGH WINDOW
- DUAL L.E.D. LIGHT STRIPS LOCATED IN HOSE BED
- ONE FULL WIDTH/DEPTH ADJUSTABLE SHELF IN COMPARTMENTS L51 AND R51
- 120V DUPLEX RECEPTACLE LOCATED IN COMPARTMENTS L51, L52, L53, R51, R52, R53 AND R54
- (1) WHELEN M4V2 LED MOUNTED IN EACH INTERIOR CAB DOOR
- OIL DRY HOPPER LOCATED IN ROOF HATCH COMPARTMENT RH1

REV	DATE	BY	CH	ENFORCER
19JAN21	LME	DTS		CHASSIS DATA
08JAN21	JRC	CDU		MAKE
13NOV20	LME	CHR		PIERCE
29SEP20	JRC	CDU		MODEL

		JOB NO.	35404
		SCALE	DATE
TITLE	1500-D-1000 GAL POLY, 214\"/>		
FOR	BAREVILLE FIRE COMPANY NO.1 LEOLA, PENNSYLVANIA		
DWG NO.	35404AD		
	DRAWN BY	JRC	24SEP20
	CHECKED BY	NPE	24SEP20
	SHEET SIZE	D	SHEET NO.
			1 OF 1