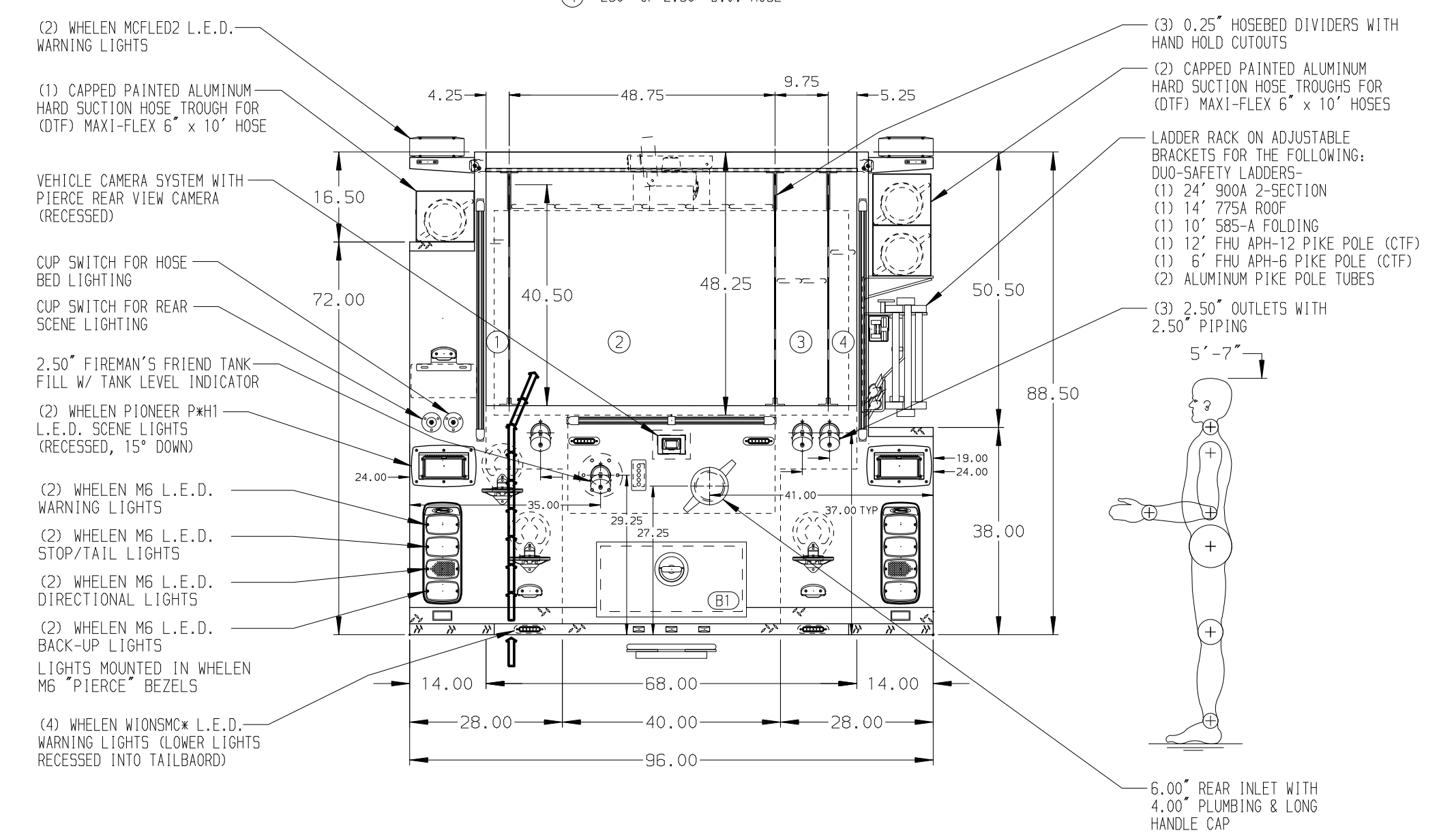
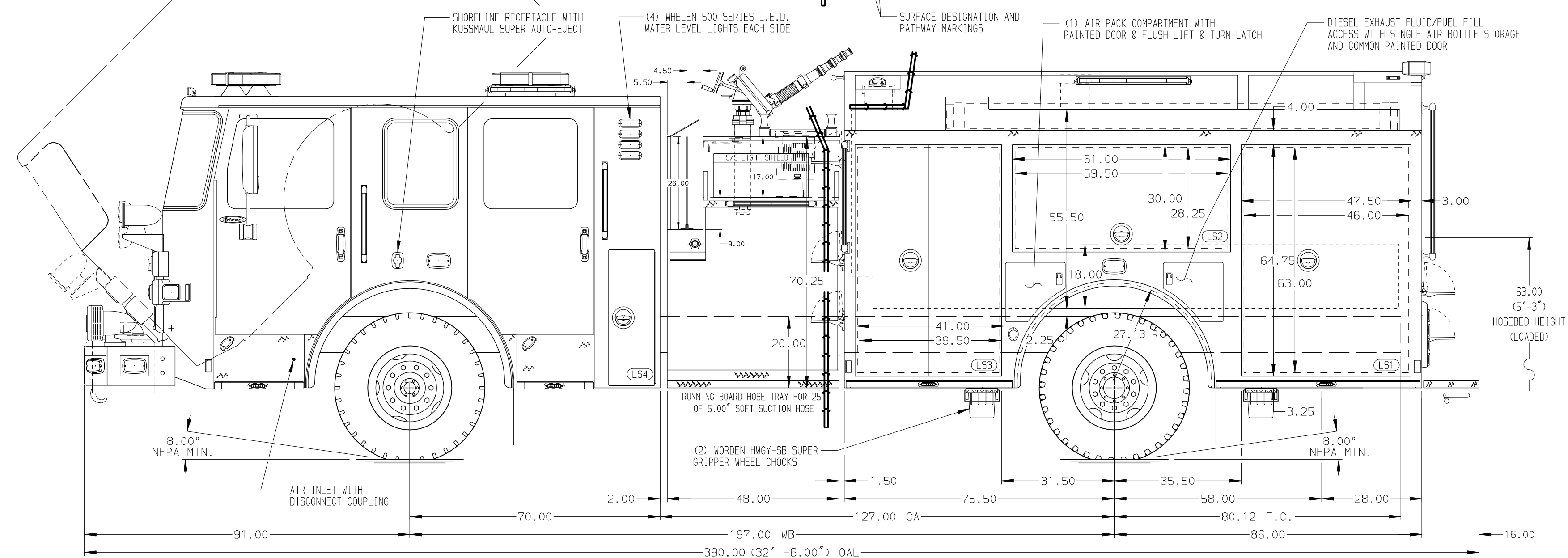


HOSEBED CAPACITIES

- ① 300' OF 1.75" D.J. HOSE
- ② 2000' OF 5.00" D.J. HOSE
- ③ 400' OF 2.50" D.J. HOSE
- ④ 250' OF 2.50" D.J. HOSE



ALUMINUM BODY

SIDE ROLL AND FRONTAL IMPACT PROTECTION

NOTE
 DIMENSIONS SHOWN ARE APPROXIMATE AND ARE SUBJECT TO MINOR DEVIATIONS AS MAY OCCUR OR BE NECESSARY IN CONSTRUCTION. MINOR DETAILS NOT SHOWN.

1. BATTERY CHARGER LOCATED BEHIND DRIVER'S SEAT
2. BATTERY CHARGER INDICATOR LOCATED ON DRIVER'S SEAT RISER
3. DUAL L.E.D. LIGHT STRIPS LOCATED IN HOSE BED
4. ONE FLOOR MOUNTED SLIDE-OUT TRAY IN COMPARTMENT R51
5. ONE FULL WIDTH/DEPTH SHELF IN COMPARTMENTS L51, L52, L53, R51, & R52
6. ONE 15/20A 120V DUPLEX RECEPTACLE IN COMPARTMENTS L51, L52, & L53.
7. ONE 15/20A 120V DUPLEX RECEPTACLE IN LEFT SIDE EMS COMPARTMENT
8. AUTOMATIC TIRE CHAINS TO BE PROVIDED AT REAR

REV	DATE	BY	CH	ENFORCER
1	19NOV18	GVH	DTS	PIERCE
2	24OCT18	GVH	DTS	MODEL

		JOB NO.	33049
		SCALE	DATE
TITLE	1750-D-1000P, 980G WATER/20G FOAM, 161" FDLER BODY 48" SIDE CONTROL, (2) CROSSLAYS, DELUGE	DRAWN BY	19SEP18
FOR	RELIANCE HOSE COMPANY #1 ELIZABETHVILLE, PENNSYLVANIA	CHECKED BY	19SEP18
DWG NO.	33049AD	SHEET SIZE	SHEET NO.
		D	1 OF 1