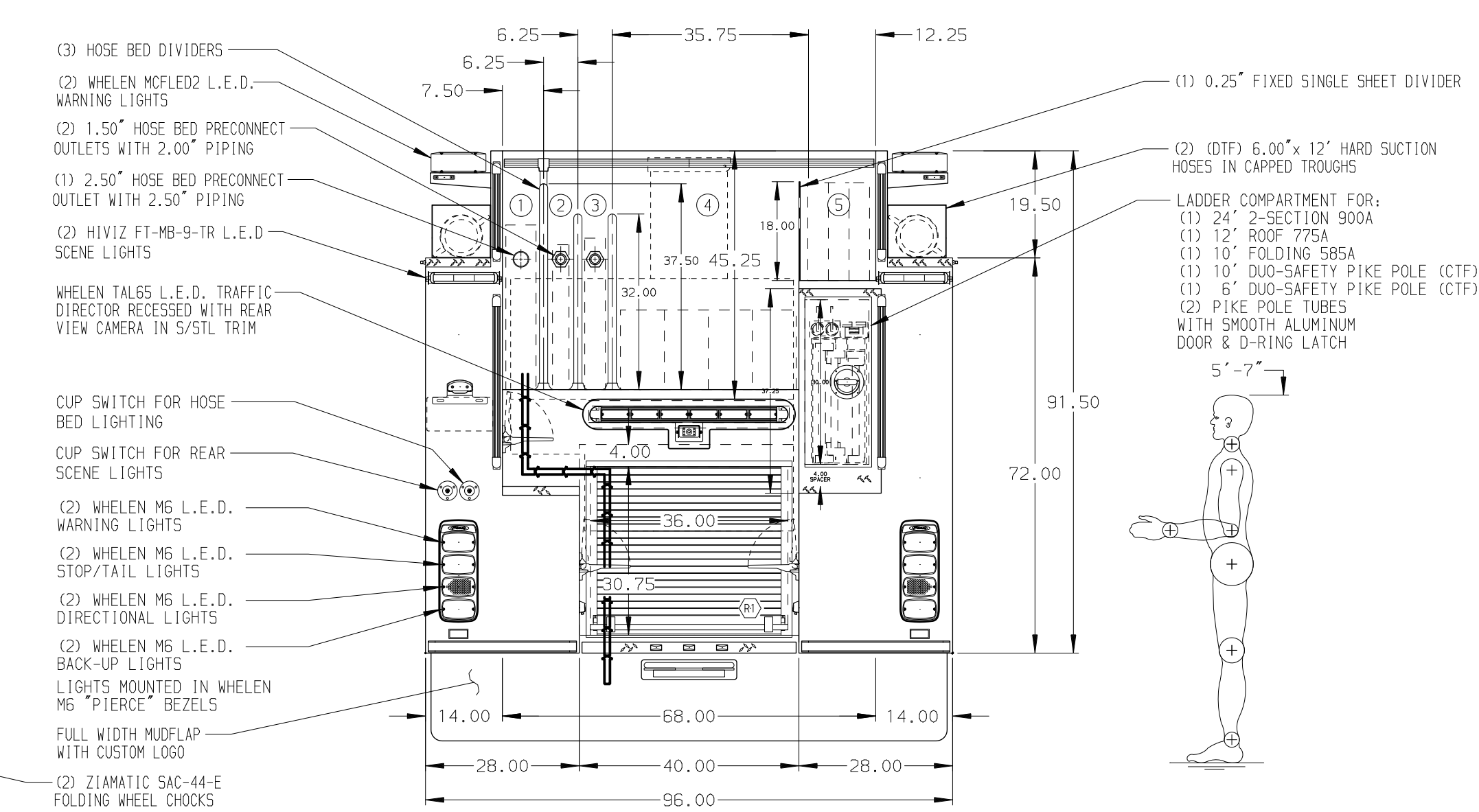
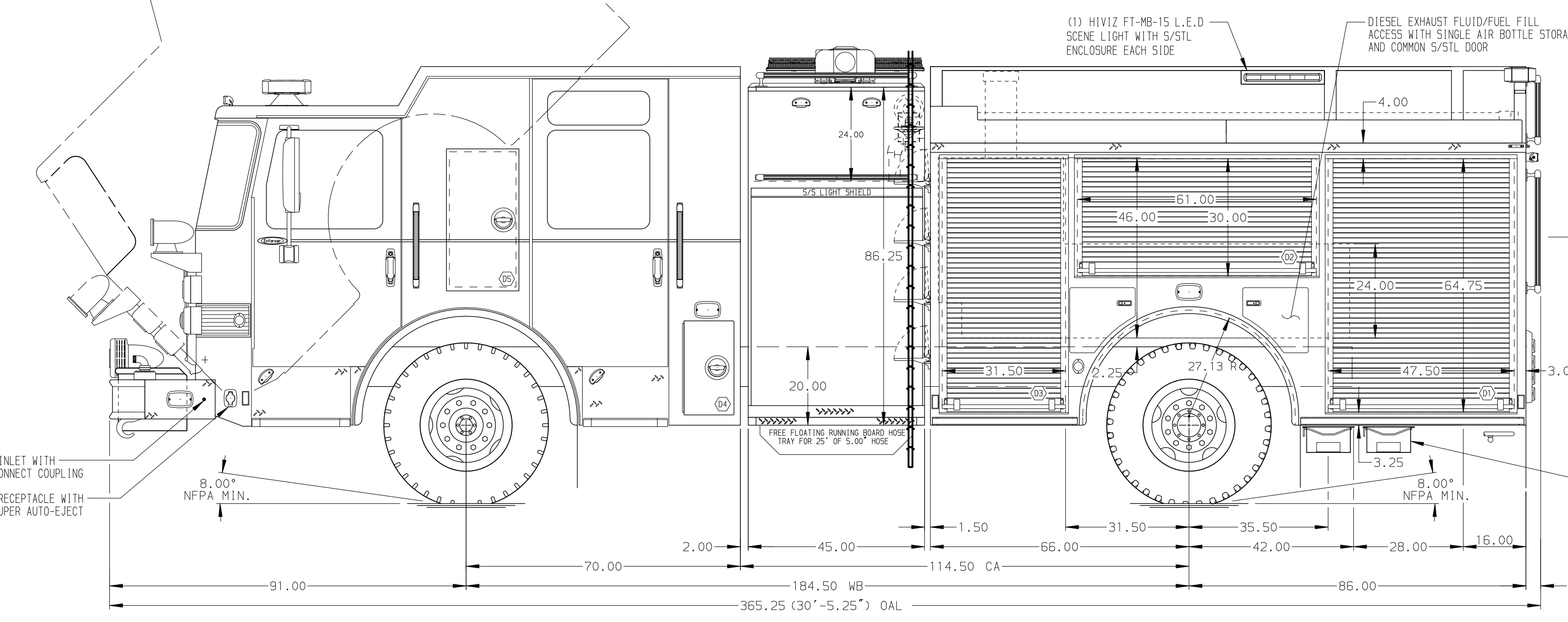


- HOSEBED CAPACITIES
- ① - 300' OF 3.00" D.J.C. HOSE
 - ② - 300' OF 2.00" D.J.C. HOSE
 - ③ - 300' OF 1.50" D.J.C. HOSE
 - ④ - 600' OF 5.00" D.J.C. HOSE
 - ⑤ - 600' OF 2.00" D.J.C. HOSE



ALUMINUM BODY

SIDE ROLL AND FRONTAL IMPACT PROTECTION

NOTE
DIMENSIONS SHOWN ARE APPROXIMATE AND ARE SUBJECT TO MINOR DEVIATIONS AS MAY OCCUR OR BE NECESSARY IN CONSTRUCTION.
MINOR DETAILS NOT SHOWN.

- 1. E2-TRAC HYDRAULIC AND SYSTEM
- 2. BATTERY CHARGER LOCATED IN COMPARTMENT D3
- 3. BATTERY CHARGE INDICATOR LOCATED ON DRIVER'S SEAT RISER
- 4. DUAL L.E.D. LIGHT STRIPS LOCATED IN HOSE BED
- 5. DRIP PAN GUARD FOR ROLL-UP DOOR LOCATED ON ALL BODY COMPARTMENTS
- 6. ONE FLOOR MOUNTED SLIDE-OUT TRAY IN COMPARTMENTS P1 & P1
- 7. ONE ADJ FULL WIDTH/DEPTH SHELF IN COMPARTMENTS D2, D3, P1, P2, & P3
- 8. TWO 15A 120V 6-PLACE RECEPTACLE STRIP LOCATED INSIDE CAB
- 9. ONE 15/20A 120V DUPLEX RECEPTACLE LOCATED INSIDE EACH EMS CABINET

REV	DATE	BY	CH	CHASSIS DATA
▽	040CT18	GVH	DTs	MAKE
▽	30AUG18	GVH	EFA	PIERCE
▽	03AUG18	GVH	NPA	MODEL ENFORCER AWD

		JOB NO.	32749
		SCALE	DATE
TITLE	1500-D-500P, 152" FH-FDLR BODY, 45" SIDE CONTROL LIGHT TOWER, LADDERS BETWEEN TANK & SIDE SHEET	DRAWN BY	26JUL18
FOR	WITMER FIRE COMPANY WITMER, PENNSYLVANIA	CHECKED BY	27JUL18
DWG NO.	32749AD	SHEET SIZE	SHEET NO.
		D	1 OF 1