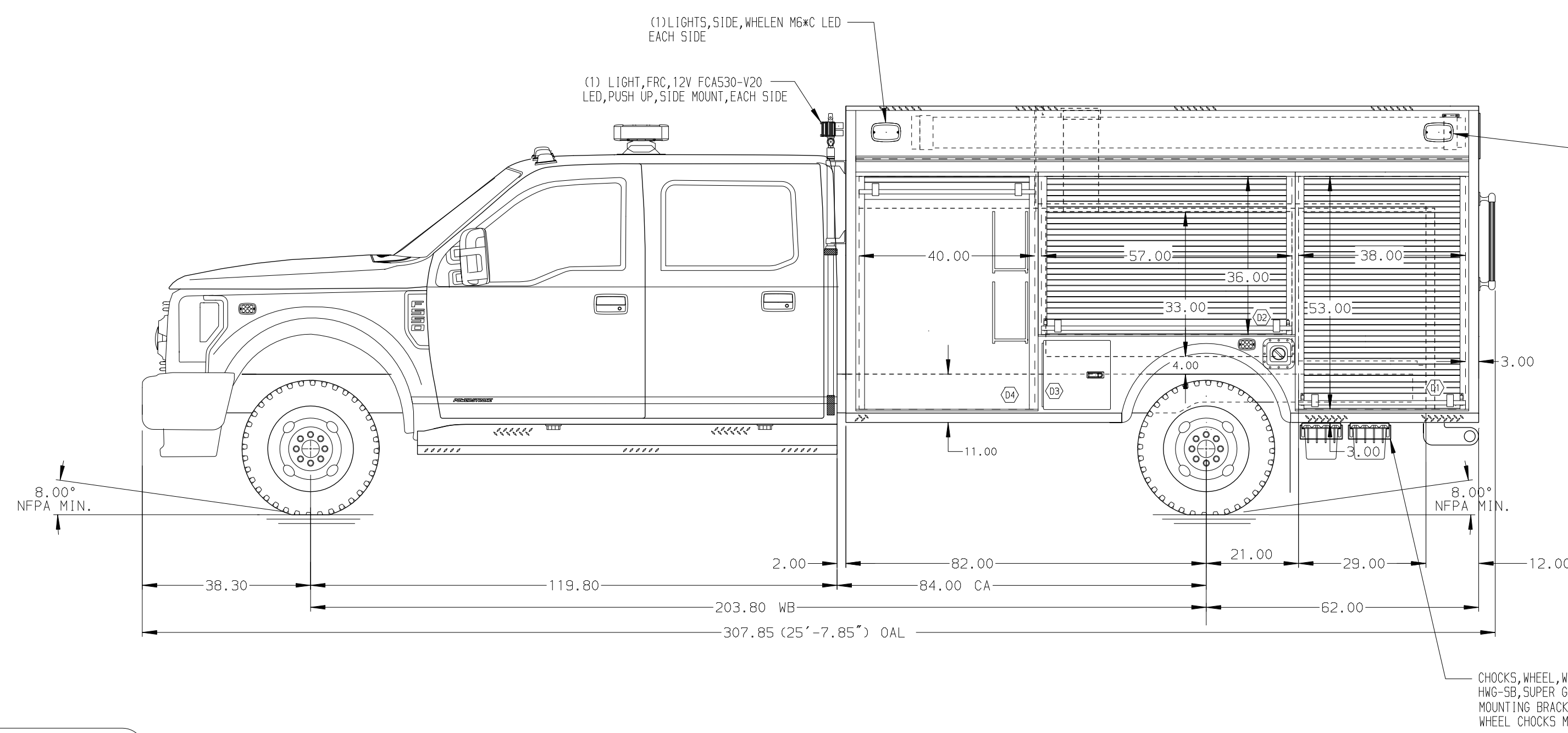


- HOSEBED CAPACITIES
- ① 400' OF 1.50" DJ POLYESTER HOSE
 - ② 300' OF 2.50" DJ POLYESTER HOSE



- (2) HARD SUCTION HOSE, 6" x 10', PROVIDED BY FD
- (3) TUBES, ALUM PIKE POLE STORAGE, (3) PIKE POLES, 6" FIRE HOOKS UNLIMITED, FIBERGLASS, APH-6", GAS SHUT OFF

- LIGHTS, CLEARANCE/MARKER/ID, REAR, FRP LED BAR & P25 LED, 4 LTS

- LIGHTS, REAR/SIDE UP ZONE, WHELEN M6K LED

- LIGHTS, REAR SCENE, WHELEN, PELCC LED, 45 DEG FLANGE

- HANDRAIL, REAR OF BODY, MINI PUMPER

- BRACKET, LICENSE PLATE & LIGHT, P25 LED

- SWITCH FOR HOSE BED LIGHTS

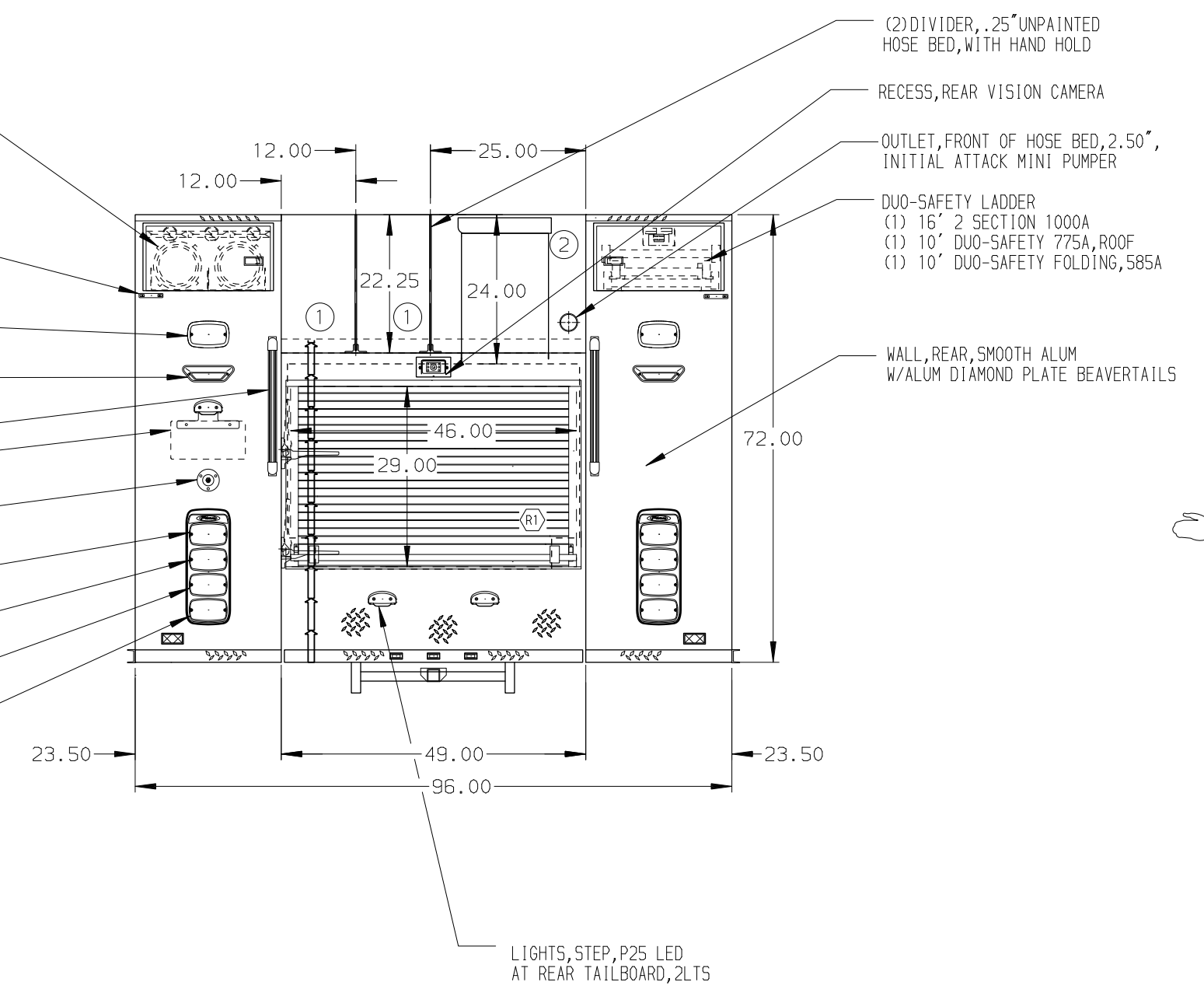
- (2) WHELEN M6 L.E.D. WARNING LIGHTS, SPLIT COLOR

- (2) WHELEN M6 L.E.D. STOP/TAILO LIGHTS

- (2) WHELEN M6 L.E.D. DIRECTIONAL LIGHTS

- (2) WHELEN M6 L.E.D. BACK-UP LIGHTS

- LIGHTS MOUNTED IN WHELEN M6 "PIERCE" BEZELS



ALUMINUM BODY

NOTE
DIMENSIONS SHOWN ARE APPROXIMATE AND ARE SUBJECT TO MINOR DEVIATIONS AS MAY OCCUR OR BE NECESSARY IN CONSTRUCTION. MINOR DETAILS NOT SHOWN.

REV.	DATE	BY	CHK'D

<p>MANUFACTURING INC. BRADENTON, FLORIDA</p>		JOB NO.	32618
		DATE	SCALE 1:24
TITLE	1000-D-300 POLY, 84" CA, MINI PUMPER BODY (2) SPEEDLAYS	09APR18	DRAWN BY JLA
FOR	NEW HOPE EAGLE FIRE COMPANY NEW HOPE, PENNSYLVANIA	12APR18	CHK'D BY RWI
DRWG. NO.	32618AD	SHEET NO.	SHEET SIZE
		1 OF 1	D