

2018 ROAD RALLY

is heading to a town near you!

WELCOME OUR **TECHNIMOUNT**
NEW VENDOR! SYSTEM

GLICK

at a **GLANCE**

Summer 2018
VOL. 25/ISSUE 2

NEW!

2018 Pierce® Ascendant™ 100' Heavy-Duty Aerial Tower

Reaching heights of 100' vertically and 93' horizontally, this new aerial tower packages a 5-section heavy-duty steel tower onto a vehicle with a low overall height of 10'8" and length under 42'.

See insert for detailed info.



INSIDE:

Spotlight on our Fabrication Department • New Sales and Deliveries • Glick Employee News • Firehouse Grub

Letter from the President



Hello Summer!

As we approach the dog days of summer, FDIC 2018 and Fire Expo 2018 are in the history books. It is always exciting to speak with so many of you and talk about the **Pierce®**, **B.R.A.T.**, **Braun**, **Demers**, and **First Priority** products, and how their innovations would work in your individual communities.

It was an exciting couple of days in Indianapolis as all of our account managers were introduced to the **Pierce® 100' Ascendant® Aerial Tower**, the latest addition to the Ascendant® Family of Aerials. We were so excited to be able to show this unit at Fire Expo as well. If you missed FDIC or Fire Expo in Harrisburg, please check out the new tower at www.piercemfg.com/100Tower.

It has been a busy spring for new deliveries! Please check out our web site, www.glickfire.com/deliveries, for information and pictures of all the new apparatus coming to Pennsylvania!

We currently have a stock **Pierce® Enforcer™ pumper** available for quick delivery. We also have stock ambulances ready for a quick delivery:



A Demers MXP-150 Type 1 with a Chevy 3500 4x4 chassis, a Demers Type II Sprinter, and a Braun Chief XL Type 1 on a Ford F450 4x4. Please reach out to your regional account manager for additional information on any of these units.

Our **Zelienople paint and body shop** has ramped up quickly and we are encouraged by the confidence that so many customers have placed in our new facility, and the work our staff members are completing. Thank you!

As we continue to grow, we have open positions within **Glick Fire Equipment**. Check out the Careers section of our website, www.glickfire.com/careers, for posted positions that we are looking to fill.

If there is anything we can do to improve our service to you, I encourage you to reach out to us. Thank you for your business this past year and the confidence you place in **Glick Fire Equipment!**

Doug Glick
President

WE'RE HIRING!

Positions are available in our Eastern (Bird-In-Hand) and Western (Zelienople) PA facilities!

AVAILABLE POSITIONS:

**Accounting/Billing Clerk • Body Shop "B" Technician • Mobile Service Technician • Parts Clerk
Lead Parts Clerk • Shop Mechanic**

Come join the GLICK FIRE EQUIPMENT COMPANY, INC. team!

Dream jobs found here: www.glickfire.com/careers

COMPANY	COUNTY	APPARATUS TYPE	ACCT. MANAGER
City of Allentown	Lehigh	(3) Pierce® Enforcer™ Pumper	Bud Strauss
Beaver Falls Fire Company	Beaver	Pierce® Arrow XT™ Pumper	Joe Wrenn
Blacklick Valley Ambulance	Cambria	Demers Type I MXP150 4x4	Austin Lynn
Franklin Fire Company No. 4	Franklin	Pierce® Enforcer™ PUC Rescue Pumper	Cyle Sheaffer
Hope Fire Engine & Hose Co. No. 1	Lancaster	Pierce® Arrow XT™ Pumper	Jake Bachman
Humane Fire Company No. 1	Schuylkill	Pierce® Enforcer™ Pumper	Bud Strauss
Medic Rescue	Beaver	First Priority Renaissance Remount	Chris Woolfolk
New Holland EMS	Lancaster	Demers Chief XL Type I	Chris Woolfolk
Northern Lebanon Fire & Emergency Svc.	Lebanon	Pierce® Enforcer™ Heavy Duty Walk-in Rescue	Randy Uhrich
Saegertown Volunteer Fire Dept.	Crawford	Pierce® Enforcer™ Pumper	Joe Wrenn
Witmer Fire Protective Assoc.	Lancaster	Pierce® Enforcer™ Pumper	Jake Bachman



We are excited to announce that Glick Fire Equipment is once again doing our **ROAD RALLY** across PA!

We will be *on tour* July 20–24, making stops along our route through Indiana, Butler, Erie, Elk, Potter, Clinton, and Northumberland Counties.

Come see us at various individual fire companies, meet their members and view their Pierce® apparatus. We welcome members from surrounding companies, and their Pierce® apparatus as well. There will be t-shirts, giveaways, and a chance to get to know your local first responders.

We can't wait to meet everyone along our journey.

Watch for exact times and locations on our website at www.glickfire.com/roadrally, as well as our Facebook page.

FIREHOUSE GRUB *Chicken Ranch Pasta*

- 8 ounces penne pasta
- 1 Tbsp butter
- 1 Tbsp flour
- 2 Tbsp dry ranch dressing seasoning mix
- 2 cups milk
- 1 cup shredded cheddar cheese
- 1/3 cup cooked, chopped bacon
- 2 cups cooked, chopped chicken



In a large pot, cook pasta according to package directions. Drain and set aside.

In same pot, melt butter. Add flour and stir. Cook flour for 1 minute. Slowly whisk in milk. Continue cooking until sauce thickens. Stir in ranch dressing mix and cheese. Stir until cheese melts. Add chicken, bacon and pasta. Stir to coat.

www.plainchicken.com



CONGRATULATIONS

to our website survey winner,
Ray Bosche of the
Doylestown Fire Company!

Thank you to everyone who entered, and check our website and Facebook page for your chance to enter future promotions!

A Place For Everything and Everything In Its Place

We've all probably used this phrase and it's easy to believe that the way we've been doing our organizing is the best way. The trouble is, our needs constantly change. As departments grow—buy new equipment, get rid of old equipment, and update training—there is also a need to update the way we organize all the tools we use.

Are your job-specific tools organized and stored in a logical way? Are they easy to reach? Do you find you have to dig under tools and equipment to find that one necessary piece? Many of us can benefit from seeing how

other departments have their trucks arranged.

Glick Fire Equipment has dedicated fabricators who build various custom tool storage systems on site, starting from scratch for every project.

Or, we can help extend the storage capabilities of your existing equipment so that all your tools and gadgets are held in place, always within reach and organized in a way that is efficient for your company's needs.

Please contact our service department professionals to set up an appointment.



Glick Fire Equipment is excited to announce our dealership agreement with

TECHNIMOUNT SYSTEM

Technimount System is a manufacturer of bracket mounting systems for portable medical devices. They offer the only mounting solution on the market that fits on different brands of portable medical equipment for ambulances and stretchers.



The majority of their mounts are certified based on SAE 3043, and are made to accept all kinds of medical devices and defibrillators. The universal base allows you to manage your entire inventory, which reduces your overall cost!

**Contact your EMS sales representative for more information, or to set-up a demo.
glick@glickfire.com or 717.299.4120**

EMPLOYEE NEWS

Welcome to our New Employees!

PAUL BURKMAN

Shipping/Receiving • Bird-In-Hand

Paul brings with him experience in shipping, warehouse management, purchasing, and even a short stint as an inspector at American LaFrance. He is a local guy, having graduated from Conestoga Valley, and enjoys racing.

paul.burkman@gllickfire.com

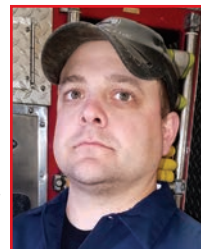


BUCK HARPSTER

Road Technician • Mill Hall

Born and raised in the State College area, Buck grew up on a dairy farm, igniting his passion of repairing things. An active member of the Alpha Fire Company for over 14 years, he presently holds the title of 2nd Assistant Chief.

buck.harpster@gllickfire.com



BOB BOULE

Shop Technician • Bird-In-Hand

Bob comes to us with extensive knowledge and experience with Ford products, specifically working on heavier trucks and diesels. Bob and his wife have three boys, and in his spare time he enjoys watching his sons play sports.

bob.boule@gllickfire.com

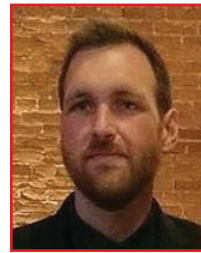


TOM KEESEY

Road Technician • Bird In Hand

Based out of the northern Chester County area, Tom will be putting our 15th service truck on the road! Tom has experience with farm, construction, and snow equipment, and is an active member at the Ludwigs Corner Fire Company.

tom.keeseey@gllickfire.com



Best Wishes to our Wedding Couples!



Steve Gerhart, service writer in our Eastern facility, dances with his daughter, Amanda, at her April wedding.

Cyndi Knapik (right), Accounting Manager in our Eastern facility, celebrated her son Mason's wedding in May.



Sarah Sweitzer, parts clerk in our Eastern facility, and granddaughter of Dave and Sue Glick, tied-the-knot with Marty on June 9.



Photo courtesy of Rachel Ruhl Photography

Dennis Leiphart, shop mechanic in our Eastern facility, and his fiancée, Danielle, have a June 23rd wedding planned.



Retirement!



Lee Nanna (right), service writer at our Western facility, retired in April after 16 years with Glick Fire Equipment! ENJOY!

It's A Girl!

Congratulations to Tom Burgmeier, road technician for our Eastern facility, and his wife, Jenn, on the arrival of their third child, Brooke Carolyn!



AMED, Blair County – Job #M17-1252/3/4 (3 units)

Demers Sprinter Van 2500 Type II ambulance, 4x4, with Mercedes 3.0L CDI turbo diesel engine, Stryker® Performance-LOAD system, Power inverter with battery charger, LED Lights, Back-up camera

BELLEFRONTE EMERGENCY MEDICAL SERVICE, Centre County – Job #FL18P-005

Demers MXP170 Type I ambulance with Freightliner M2 chassis, LED lighting package, Liquid spring suspension, Whelen® Howler low frequency siren, Pioneer™ AVIC Radio-GPS, Demers mobility seating, Inverter, Dual main O₂ system

BROOKVILLE VOLUNTEER FIRE CO., Jefferson County – Job #31141

Pierce® Enforcer™ 107' Ascendant™ Single Axle Heavy-Duty Aerial with Cummins® L9 450 hp engine, Allison® 3000EVS trans., Pierce® 1500GPM single-stage PUC pump, 500-gallon water tank, Husky® 3 single-agent foam system, Pierce® Command Zone™ Advanced electronics, 238" wheelbase

CENTRE LIFELINK EMS, Centre County – Job #07625

Braun Chief XL Type III ambulance on a Ford E-450 chassis, Whelen® emergency lighting, LED dome lights, Aluminum cabinets, Mastertech™ electrical, EZ Glide™ door, Custom interior

HARLEYSVILLE, Montgomery County – Job #07555

Braun Express Plus Type III ambulance, Ford F-350 chassis, MasterTech™ electrical system, Eberhard door handles, SolidBody™ construction, EZ Glide door, Aluminum cabinets, Stryker® Performance-LOAD



CLIFTON HEIGHTS FIRE CO., Delaware County – Job #31535

Pierce® Enforcer™ Pumper with Cummins® L9 450 hp engine, Allison® 3000EVS trans., Waterous CSU 1750GPM single-stage pump, 750-gallon New York style water tank, Pierce® Command Zone™ Advanced electronics, 22" chrome front bumper with (2) hose trays.

CUMBERLAND VALLEY HOSE CO. NO. 2, Cumberland County – Job #31298

Pierce® Velocity™ 100' Aluminum Rearmount Aerial Platform, Cummins® X15 600 hp engine, Allison® 4500EVS trans., Pierce® Command Zone™ Advanced electronics, Whelen® LED lighting package, Whelen® LED scene lights, Harrison 15kW hydraulic generator, 22" extended bumper

DAUNTLESS HOOK & LADDER AMB SERV, Snyder County – Job #006938R

First Priority Renaissance Remount of a MedTec Type I ambulance, Ford F-450 4x2, LED interior and emergency lighting, Inverter, New electrical and heating system

DUNCANSVILLE EMS, Blair County – Job #F17-1308

Demers TSE Type II ambulance, with Ford chassis, 3.7L V6 gas engine, Stryker® Performance-PRO cot, Stryker® Performance-LOAD system, LED Lighting

EPHRATA PIONEER FIRE CO., Lancaster County – Job #31613

Pierce® Enforcer™ pumper with Detroit® Diesel 525 hp engine, Allison 4000EVS trans., Waterous 2000GPM single-stage pump, 750-gallon New York style water tank, Whelen® LED warning light package, Roto Ray LED warning light, Mars 888 warning lights, Q2B® and Sho-Me® electronic sirens

FLOURTOWN FIRE CO., Montgomery County – Job #30991

Pierce® Velocity™ 105' Heavy Duty PUC Ladder with Detroit® Diesel 525 hp engine, Allison® 4000EVS trans., Pierce® 1500GPM single-stage PUC pump, 450-gallon water tank, TAK-4® front axle, Pierce® Command Zone™ Advanced electronics

GRANVILLE FIRE CO., Mifflin County – Job #31701

Pierce® Enforcer™ Tanker/Pumper with Detroit® Diesel 525 hp engine, Allison® 4500EVS trans., Hale® Qmax-150 1500GPM single-stage pump, 2,500-gallon water tank, Pierce® Command Zone™ Advanced electronics, Zico QUIC-LIFT™ ladder system, Zico QUIC-LIFT™ FOL-DA-TANK® system

HASTINGS AREA AMBULANCE, Cambria County – Job #M17-1299

Demers Sprinter 2500 Van Type II ambulance with 3.0L CDI Turbo Diesel engine, Stryker® cot system, Stryker® Performance-LOAD system, Mercedes Becker Map Pilot Navigation System, Rigid Industries SAR Compliant fog light, Anti-skid lateral steps (running boards)

KEYSTONE VALLEY FIRE DEPT., Chester County – Job #31677

Pierce® Enforcer™ Pumper with Cummins® ISL9 450 hp engine, Allison® 3000EVS trans., Pierce® 1500GPM single-stage pump, 750-gallon water tank, Whelen® LED warning light package, Q2B® Siren, HiViz LED 72" 12-volt visor light

LANCASTER TWP. FIRE DEPT., Lancaster County – Job #31455
Pierce® Arrow XT™ Heavy-Duty Rescue Pumper with Cummins® L9 450 hp engine, Allison® 3000EVS trans., Hale® Qmax-200 2000GPM single-stage pump, 750-gallon water tank, TAK-4® independent front suspension, OnSpot automatic tire chains, Deluge discharge with TFT 18: Extend-A-Gun

LONGWOOD FIRE CO., Chester County – Job #07594
Braun Liberty Type I ambulance on a Ford F-450 4x4 Extended Cab chassis, Stryker® Performance-LOAD system, Stryker® Power-PRO cot, Eberhard® door handles, Whelen® emergency lighting, Mastertech™ electrical

LOWER SWATARA FIRE CO., Dauphin County – Job #31302
Pierce® Enforcer™ Dry Side Tanker with Detroit® Diesel 525 hp engine, Allison® 4500EVS trans., Hale® Qmax-150 1500GPM single-stage pump, 2,500-gallon water tank, Zico QUIC-LIFT™ ladder system, Zico QUIC-LIFT™ FOL-DA-TANK® system, three crosslays

MMP&W FIRE DEPT., Franklin County – Job #B11143
B.R.A.T. Rally Ford F-550 Super Cab with Diesel 6.7L 300 hp engine, 350-gallon water tank, 10-gallon foam cell, Hale® HPX200-B23 pump, Front winch bumper, Maximum front GAWR package, Whelen® lighting

NORTHERN VALLEY EMS, Lehigh County – Job #07684/5/6 (3 units)
Braun Express Type III ambulance on Ford E-350 chassis, Whelen® emergency lighting, Eberhard® door handles, sweep out compartments, LED dome lights, aluminum cabinets, Mastertech™ electrical, EZ Glide™ door

PALMER MUNICIPAL FIRE DEPT., Northampton County – Job #30712
Pierce® Arrow XT™ 100' Heavy-Duty Tiller Aerial, Cummins® X25 600 hp engine, Allison® 4000EVS trans., Hale® 8FG 2000GPM single-stage pump, 300-gallon water tank, Pierce® Command Zone™ Advanced electronics, Whelen® lighting and scene package, HiViz LED Visor lighting



PALMER MUNICIPAL FIRE DEPT., Northampton County – Job #30713
Pierce® Arrow XT™ pumper, Cummins® ISX12, 500 hp engine, Allison® 4000EVS trans., Hale® Qmax-XS-200, 2000GPM single-stage pump, Husky 3® single-agent foam system, 1,000-gallon water tank, Pierce® Command Zone™ Advanced electronics, Whelen® lighting package, HiViz LED visor lighting

PITTSBURGH BUREAU OF FIRE, Allegheny County – Job #31422-01/02 (2 units)
Pierce® Arrow XT™ 105' Heavy-Duty Ladder (500 dry/500 water), Detroit® Diesel 525 hp engine, Allison® 4000EVS trans., Pierce® Command Zone™ Advanced electronics, Onspot automatic tire chains, Kussmaul™ air compressor

POTTSVILLE AREA EMS, Schuylkill County – Job #M17-1152
Demers Mirage LT2E Type II ambulance, Mercedes Sprinter chassis, Stryker® Performance-LOAD system, Stryker® Power-PRO XT cot, Multiplex electrical system, Whelen® LED emergency lights, Inverter, Heads up console

RESCUE HOSE COMPANY #1, Franklin County – Job #31644
Pierce® Enforcer™ pumper, Detroit® Diesel 470 hp engine, Allison 4000EVS trans., Hale® Qmax-150 1500 GPM single-stage pump, 1,000-gallon New York Style water tank, Pierce® Command Zone™ Advanced electronics

SHADE GAP AREA VOLUNTEER FIRE CO., Huntingdon County – Job #31513
Pierce® Freightliner™ Dry Side Tanker with Cummins® L9 450 hp engine, Allison® 3000EVS trans., Waterous CSU 1500GPM single-stage pump, 2,000-gallon water tank, Zico QUIC-LIFT™ FOL-DA-TANK® Rack, Driver and passenger side 6" pump intake valves

SPRINGTOWN FIRE CO., Bucks County – Job #31591
Pierce® Enforcer™ Custom Pumper with Detroit® Diesel 525 hp engine, Allison® 4500EVS trans., Pierce® PUC 1500GPM single-stage pump, 800-gallon water tank, TAK-4® independent front suspension, TFT® Hurricane deluge gun

WAYNESBORO FIRE DEPT. NO 2, Franklin County – Job #31412
Pierce® Arrow XT™ 105' Heavy-Duty Ladder with Cummins® ISX12, 500 hp engine, Allison® 4000EVS trans., TAK-4® independent front suspension, Pierce® Command Zone™ Advanced electronics, 19" extended steel bumper

WESTERN BERKS AMBULANCE INC., Berks County – Job #005844R
First Priority Renaissance Remount of a Medtec Type III ambulance with Ford E-350 gas engine, LED emergency lighting and interior lighting, Added cabinetry, Custom paint

WICONISCO FIRE CO., Dauphin County – Job #31741
Pierce® Enforcer™ Pumper with Detroit® Diesel 525 hp engine, Allison® 4500EVS trans., Hale® QTWO-200 2,000GPM, two-stage pump, 500-gallon water tank, Pierce® Command Zone™ Advanced electronics, Federal Q2B® Siren

LOOKING FOR A USED AMBULANCE?
Check out all our available units at www.glickfire.com/used-ambulances.
Contact Chris Woolfolk for additional info: chris.woolfolk@glickfire.com • 717.299.4120

Sign up for our email updates at www.glickfire.com/subscribe

FIRE EXPO 2018 ... ANOTHER SUCCESSFUL EVENT!

We hope you got a chance to see the **New Pierce Ascendant® 100' Heavy-Duty Aerial Tower** and experience the "virtual ride" in its platform. It was great to see all your familiar faces, and meet some wonderful new people as well.

A big "thank you" to all these companies who graciously lent us their vehicles: Cleona Fire Company, Glenn Lebanon Fire Company, Keystone Valley Fire Department, Lancaster Township, Longwood Fire Company, Lower Swatara Fire Department, Swatara Fire-Rescue, and William Penn Fire Company.



UPCOMING EVENTS

Aug. 23-26 PAHAZMAT Conference, Seven Springs Resort, Champion, PA www.pahazmat.com

Sept. 5-7 PA EMS Conference, Spooky Nook Sports Complex, Manheim, PA www.pehsc.org

Oct. 10-12 Code EMS Conference, Kalahari Resort, Pocono Manor, PA www.easternemscouncil.org

Get the latest "News and Events" at www.GlickFire.com/news

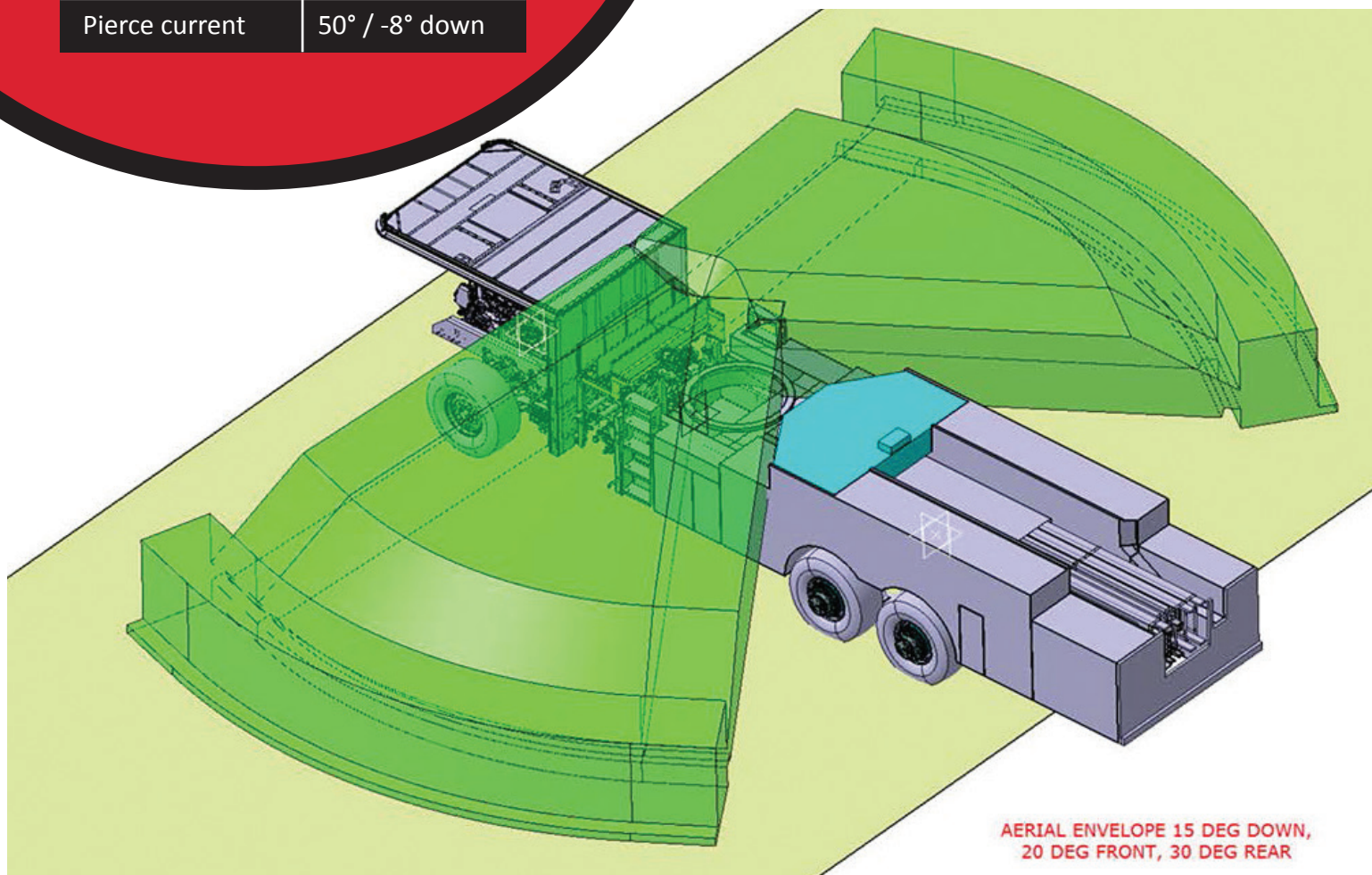
Mid-Mount Performance

- Aerial Below Grade Scrub Envelope of 50°
20° to the front
30° to the rear

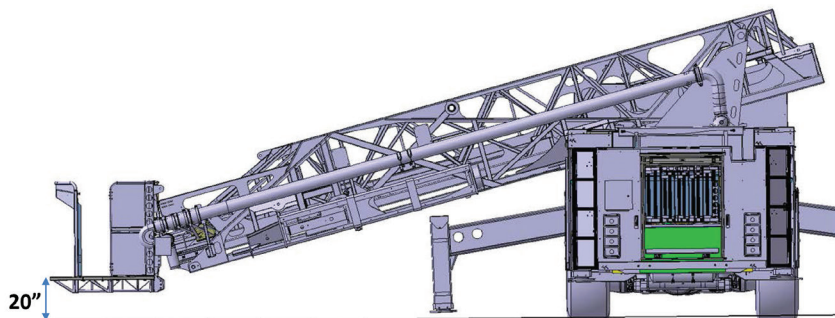
ASCENDANT	50° / -15° down
Pierce current	50° / -8° down

ASCENDANT™

100' HEAVY-DUTY AERIAL TOWER



AERIAL ENVELOPE 15 DEG DOWN,
20 DEG FRONT, 30 DEG REAR



-15° operation below grade
-20° with truck lean option

Platform Performance

Up to -20 degrees operation below grade

Please contact **Glick Fire Equipment**
for more info, or to set up a demo.

GLICK
FIRE EQUIPMENT COMPANY, INC.

717.299.4120 • glick@glickfire.com
www.GlickFire.com