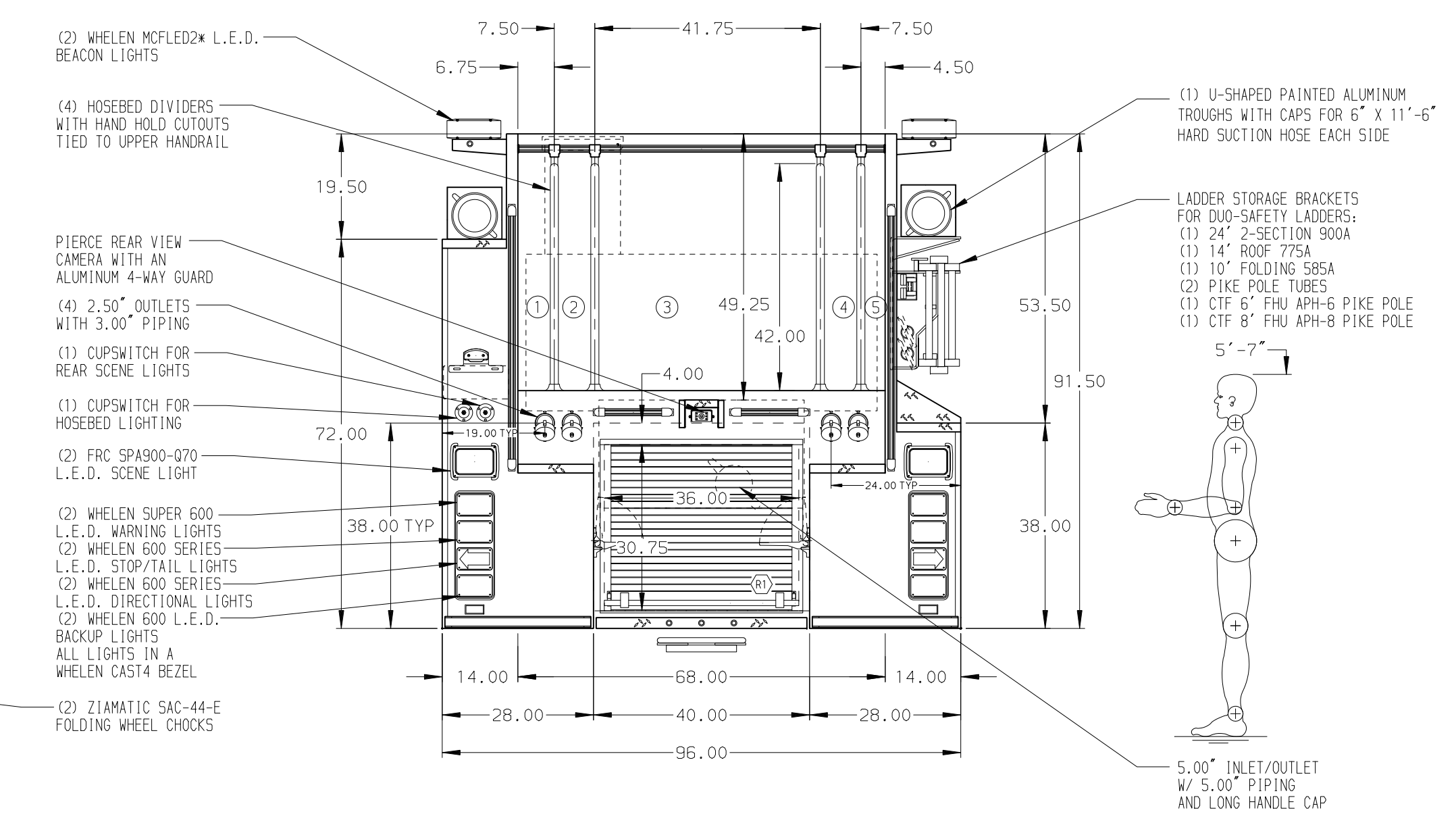
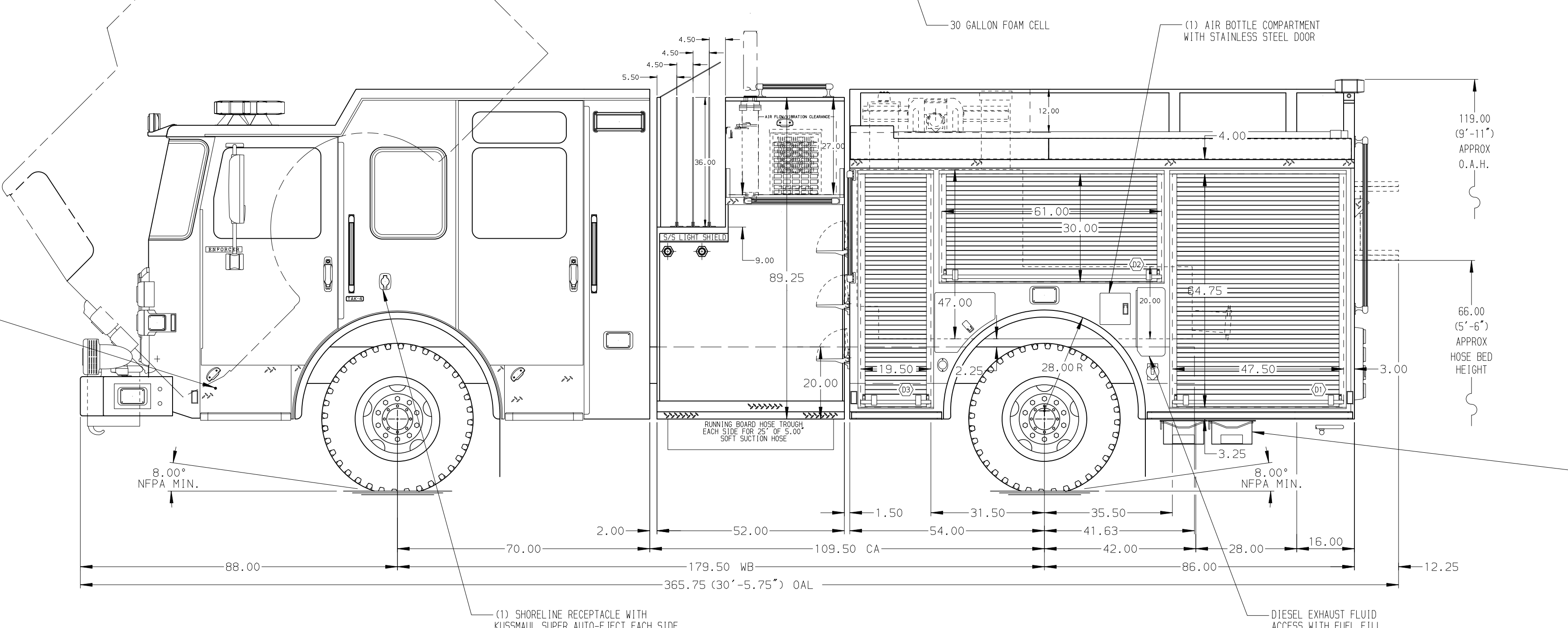


- HOSEBED CAPACITIES
- ① 200' OF 3.00" D.J. POLY HOSE
 - ② 200' OF 3.00" D.J. POLY HOSE
 - ③ 1500' OF 5.00" D.J. POLY HOSE
 - ④ 300' OF 3.00" D.J. POLY HOSE
 - ⑤ 350' OF 1.75" D.J. POLY HOSE



ALUMINUM BODY

SIDE ROLL PROTECTION

NOTE
DIMENSIONS SHOWN ARE APPROXIMATE
AND ARE SUBJECT TO MINOR DEVIATIONS
AS MAY OCCUR OR BE NECESSARY IN
CONSTRUCTION.
MINOR DETAILS NOT SHOWN.

- 1. ONSPOT AUTOMATIC TIRE CHAINS TO BE PROVIDED AT REAR
- 2. KUSSNAUL BATTERY CHARGER/AIR COMPRESSOR LOCATED BEHIND DRIVERS SEAT
- 3. BATTERY CHARGE INDICATOR LOCATED ON D.S. SEAT RISER
- 4. DRIP PAN GUARD FOR ROLL-UP DOOR LOCATED IN COMPARTMENTS D1, D2, D3, P1, P2, & R1
- 5. ONE FULL WIDTH/DEPTH ADJUSTABLE SHELF IN COMPARTMENTS D1 & D3
- 6. CIRCUIT BREAKER PANEL IN COMPARTMENT D3
- 7. ONE HANNAY ELECTRIC REWIND CORE REEL MODEL 1618-17-18 LOCATED IN CARGO AREA WITH 200' OF 10/3 CABLE
- 8. ONE 120V DUPLEX RECEPTACLES LOCATED IN CAB
- 9. ONE SLIDE-OUT TOOLBOARD W/ PEGBOARD LOCATED IN COMPARTMENT D3
- 10. ALUMINUM PEGBOARD W/ TRACK LOCATED ON REAR WALL OF COMPARTMENTS D2 & D3

REV	DATE	BY	CH	ENFORCER
18JAN16	COL	DTS	MAKE	
09DEC15	COL	DTS	PIERCE	
01OCT15	COL	CSH	MODEL	

		JOB NO.	29423	
		SCALE	DATE	
TITLE	1500-D-500P W/30G FOAM,140, FULL HGT D.S.,LOW P.S. FDLER, (4) X-LAYS,DELUGE,GENERATOR,LIGHT TOWER		DRAWN BY	24SEP15
FOR	WASHINGTON FIRE COMPANY NO. 1 MECHANICSBURG, PENNSYLVANIA		CHECKED BY	24SEP15
DWG NO.	29423AD		SHEET SIZE	SHEET NO.
			D	1 OF 1