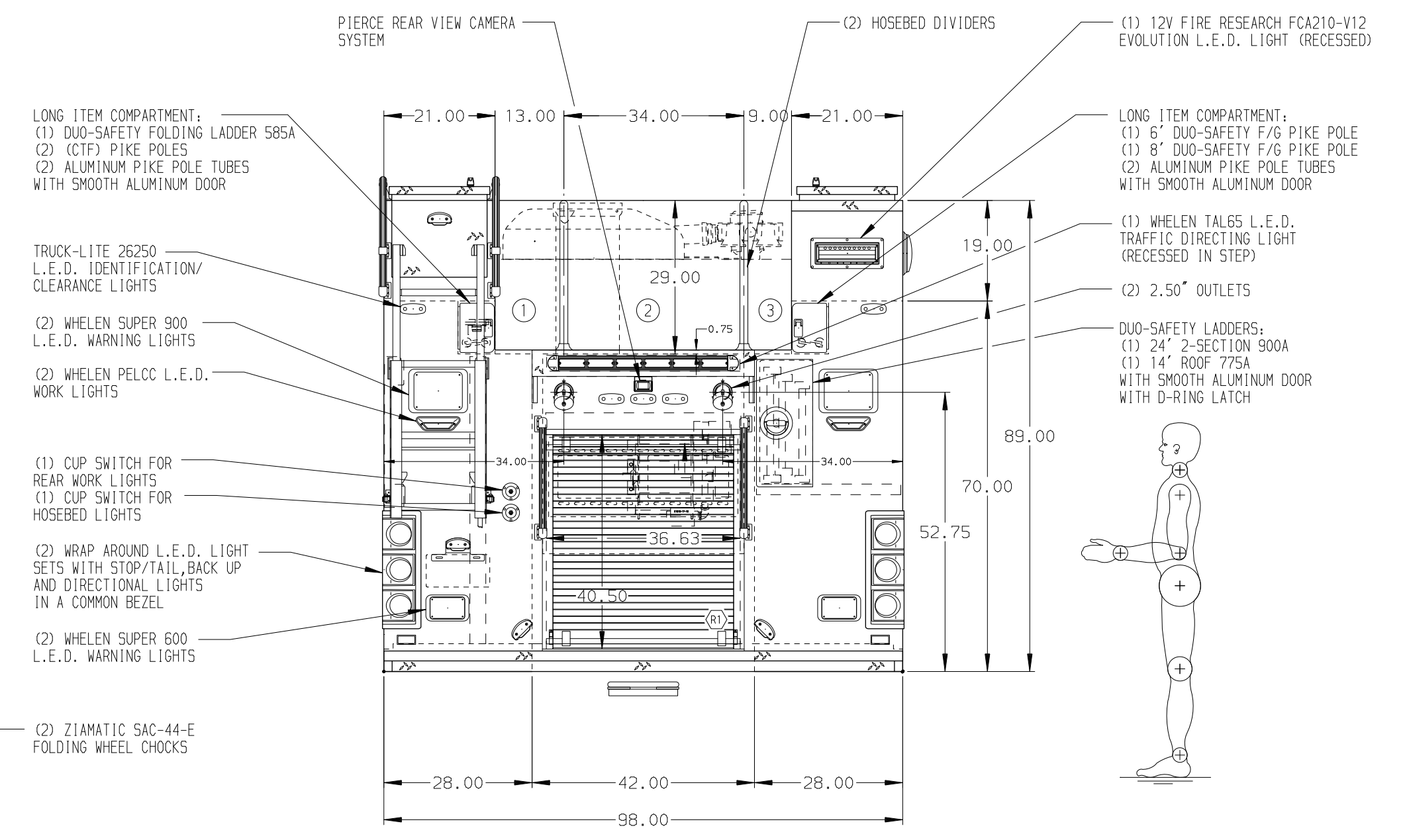
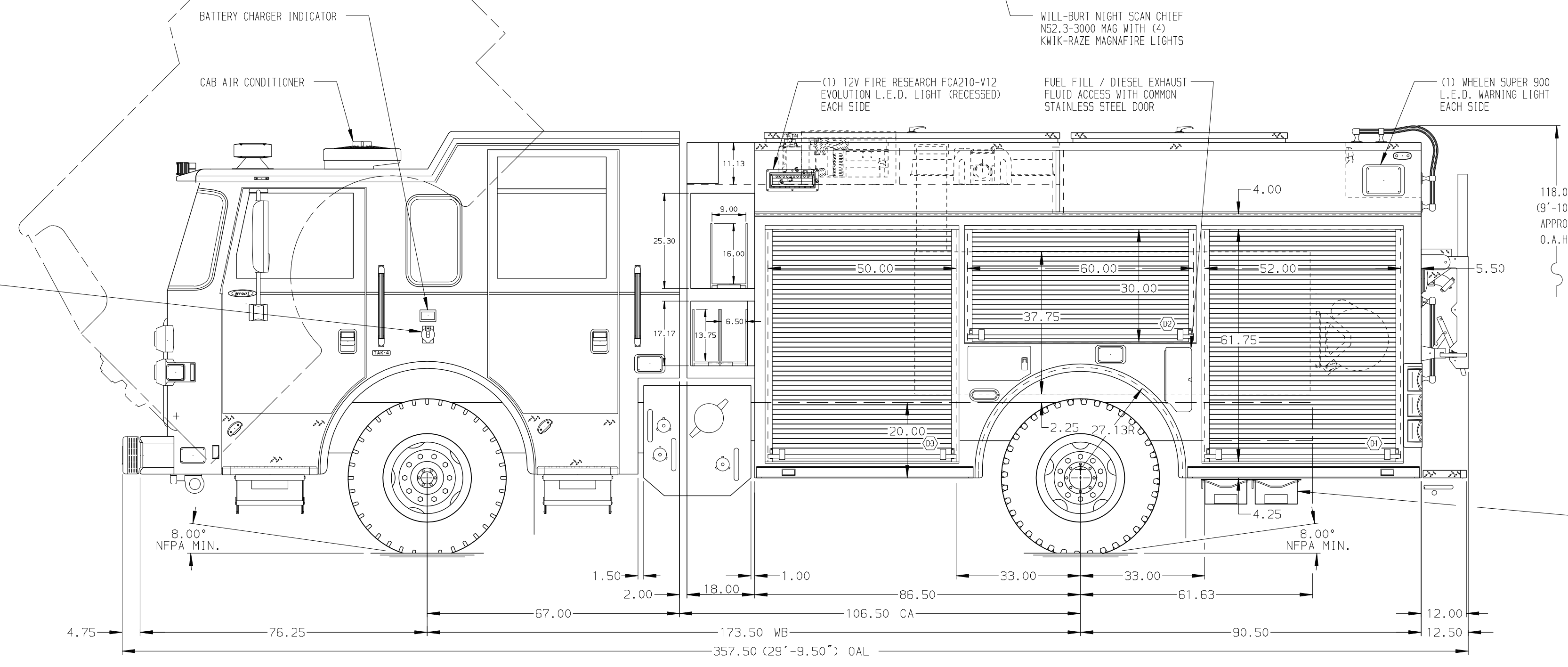


- HOSEBED CAPACITIES
- ① 300' OF 3.00" D.J. HOSE
 - ② 700' OF 4.00" D.J. HOSE
 - ③ 300' OF 1.75" D.J. HOSE



ALUMINUM BODY

SIDE ROLL AND FRONTAL IMPACT PROTECTION

NOTE
DIMENSIONS SHOWN ARE APPROXIMATE AND ARE SUBJECT TO MINOR DEVIATIONS AS MAY OCCUR OR BE NECESSARY IN CONSTRUCTION. MINOR DETAILS NOT SHOWN.

1. ONSPOT AUTOMATIC TIRE CHAINS TO BE PROVIDED AT REAR
2. ALUMINUM TREADPLATE EXTERIOR REAR WALL OF CAB
3. KUSMUL PUMP PLUS 1200 BATTERY CHARGER/AIR COMPRESSOR LOCATED BEHIND DRIVER'S SEAT
4. PERIMETER SCENE LIGHTS LOCATED PER SHOP ORDER
5. ONE 12V L.E.D. LIGHT STRIP LOCATED ON EACH SIDE IN THE HOSEBED
6. CIRCUIT BREAKER PANEL IN COMPARTMENT D3
7. PIERCE L.E.D. DUAL COMPARTMENT LIGHT STRIPS LOCATED PER SHOP ORDER
8. ONE PAINTED ADJUSTABLE FULL WIDTH/FULL DEPTH SHELF IN COMPARTMENTS D1, D3, P1 & P3
9. TWO PAINTED ADJUSTABLE SLIDE-OUT TRAYS IN COMPARTMENT D1
10. ONE PAINTED ADJUSTABLE TILTING SLIDE-OUT TRAY IN COMPARTMENT D2
11. STAINLESS STEEL FENDER CROWNS FRONT AND REAR
12. PIERCE LOGO MUDFLAPS FRONT AND REAR
13. ONE HANNAY ELECTRIC REWIND CORD REEL MODEL 1618-17-18 LOCATED R1 WITH 200' OF 10/3 CABLE AND AKRON JUNCTION BOX
14. ONE 20A, 120V DUPLEX RECEPTACLE BEHIND THE DRIVER'S SEAT

REV	DATE	BY	CH	ARROW	XT	CHASSIS DATA
▽	24AUG15	NPA	MSA			MAKE
▽	28JUL15	NPA	MSA			PIERCE
▽	18MAY15	NPA	CSH			MODEL

		JOB NO.	28879
		SCALE	DATE
TITLE 1500-D-550 GAL POLY, 177" PUC RESCUE BODY (3) XLAYS, LADDERS THRU BODY, DELUGE, GENERATOR		DRAWN BY	NPA
FOR CITY OF ALLENTOWN ALLENTOWN, PENNSYLVANIA		CHECKED BY	CDU
DWG NO. 28879AD		SHEET SIZE	D
		SHEET NO.	1 OF 1