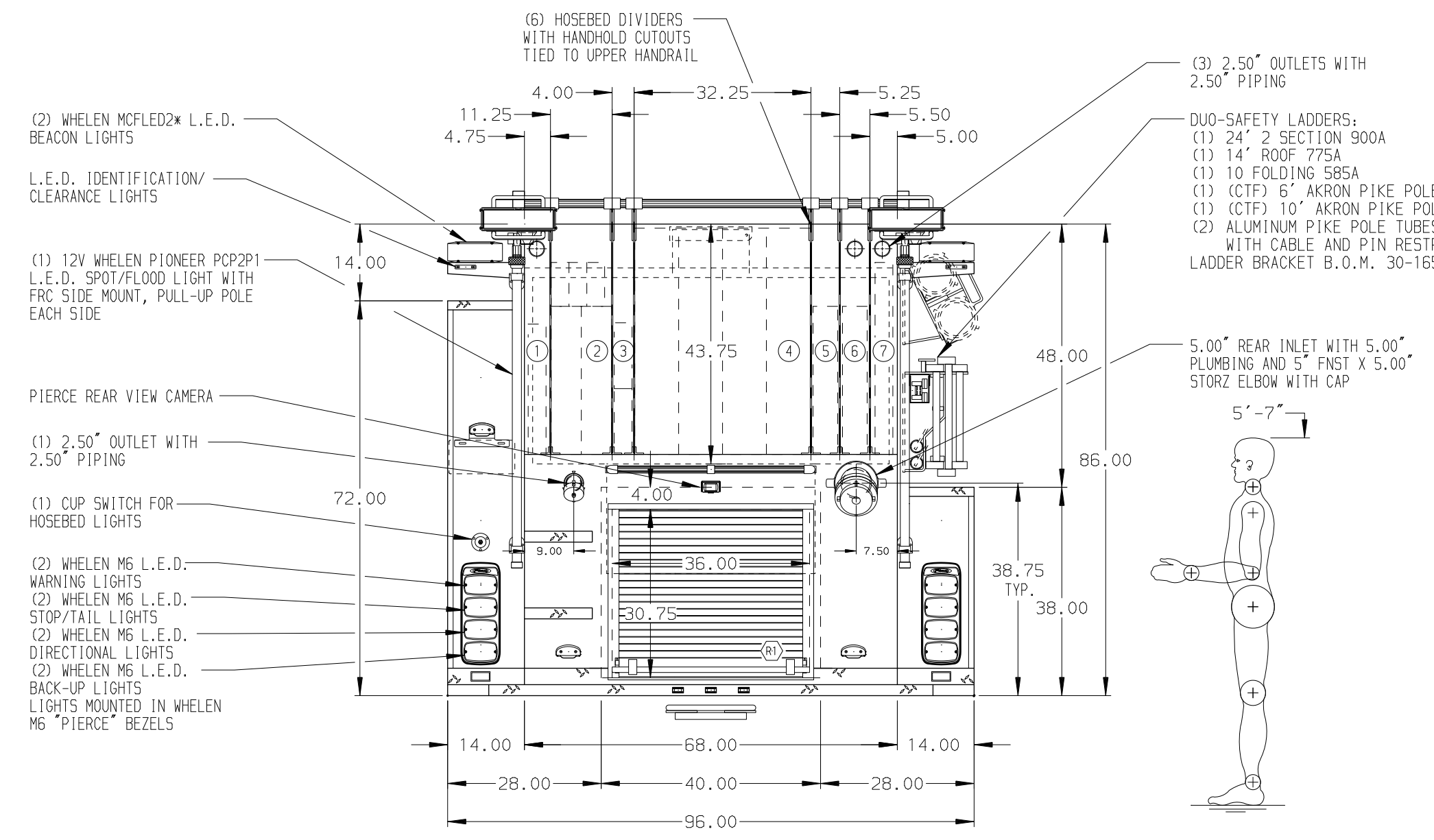
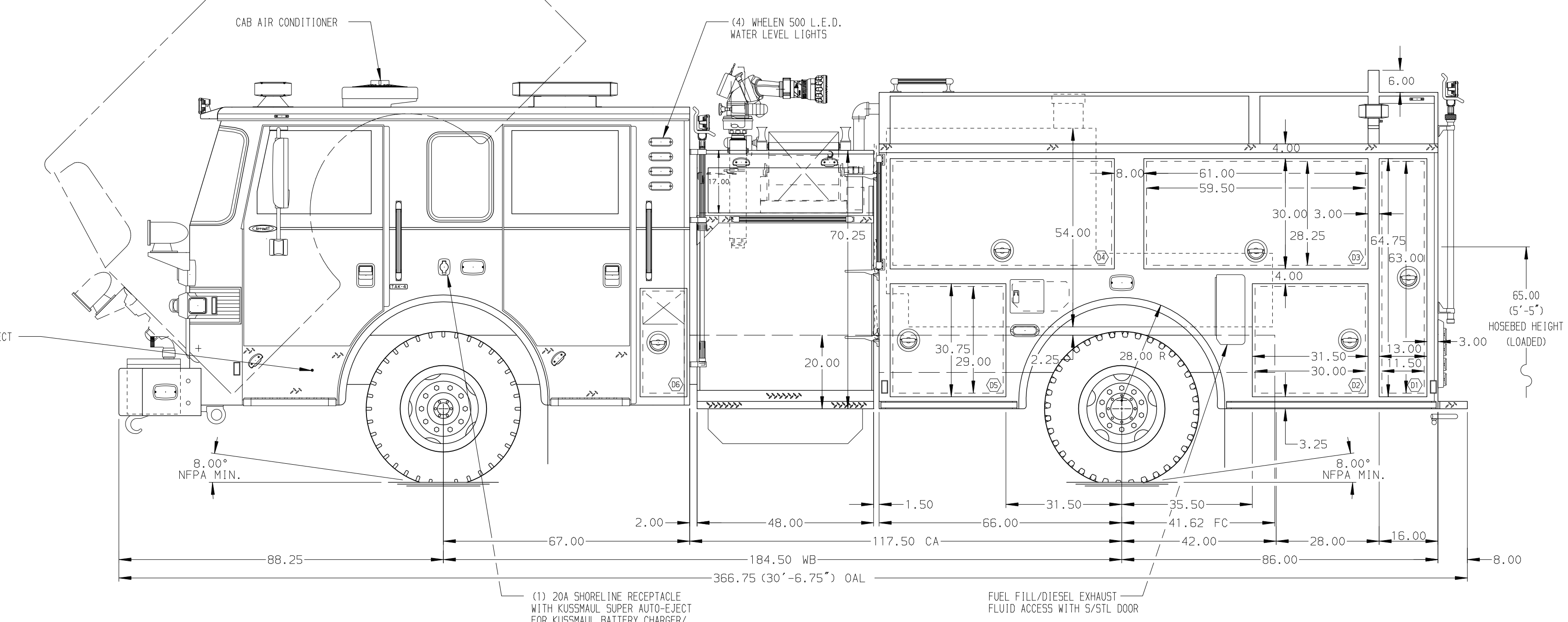


- HOSEBED CAPACITIES
- ① 200' OF 1.75" D.J. HOSE
 - ② 200' OF 1.75" D.J. HOSE (ABOVE)
 - ③ 400' OF 3.00" D.J. HOSE (BELOW)
 - ④ 100' OF 1.75" D.J. HOSE PACKS (2 OR 3)
 - ⑤ 1300' OF 5.00" D.J. HOSE
 - ⑥ 200' OF 2.50" D.J. HOSE
 - ⑦ 300' OF 1.75" D.J. HOSE



ALUMINUM BODY

SIDE ROLL AND FRONTAL IMPACT PROTECTION

NOTE
DIMENSIONS SHOWN ARE APPROXIMATE AND ARE SUBJECT TO MINOR DEVIATIONS AS MAY OCCUR OR BE NECESSARY IN CONSTRUCTION. MINOR DETAILS NOT SHOWN.

1. ONSPOT AUTOMATIC TIRE CHAINS TO BE PROVIDED AT REAR
2. ALUMINUM TREADPLATE EXTERIOR REAR WALL OF CAB
3. 5/8" STL SCUFFPLATE ON EACH CAB DOOR JAMB
4. CUSTOM TINT CREW CAB WINDOWS
5. MOUNTING BASES FOR ANTENNAS LOCATED PER SHOP ORDER
6. KUSSMAUL PUMP PLUS 1200 BATTERY CHARGER/COMPRESSOR BEHIND PASSENGER'S SEAT WITH COVER
7. BATTERY CHARGER INDICATOR LOCATED NEAR D.S. SEAT RISER WITH BRACKET
8. L.E.D. PERIMETER SCENE LIGHTS LOCATED PER SHOP ORDER
9. STAINLESS STEEL FENDER CROWNS FRONT AND REAR
10. PIERCE LOGO MUDFLAPS FRONT AND REAR

11. ONE 12V L.E.D. LIGHT STRIP LOCATED ON EACH SIDE IN THE HOSEBED
12. 5/8" STL SCUFFPLATE ON BEAVERTAILS
13. 5/8" STL SCUFFPLATE ON REAR OUTER CORNER OF BODY AND CAB
14. REVERSED HINGED DOOR ON COMPARTMENT D5
15. 5/8" STL SCUFFPLATE ON BOTTOM EDGE OF DOOR FRAMING OF COMPARTMENTS D1, D2, D3, D4, D5, P1 & P2
16. PIERCE L.E.D. DUAL COMPARTMENT LIGHT STRIPS LOCATED PER SHOP ORDER
17. PAINTED SHELF TRACKS LOCATED IN COMPARTMENTS D1, D2, D3, D4, D5, P1 & P2
18. CIRCUIT BREAKER PANEL IN COMPARTMENT D4
19. TWO ZIAMATIC SAC-44-E FOLDING WHEEL CHOCKS SHIPPED LOOSE
20. AIR OUTLET WITH SHUT OFF VALVE LOCATED ON D.S. PUMP PANEL

21. ONE 12V 63" L.E.D. STRIP LIGHT AT FRONT OF HOSEBED
22. MIC AND SPEAKER COMPARTMENT ON D.S. PUMP PANEL
23. TWO 20A, 120V DUPLEX RECEPTACLES IN CAB

REV	DATE	BY	CH	ARROW-XT
02FEB15	NPA	DTS	MAKE	
17DEC14	NPA	DTS	PIERCE	
06NOV14	NPA	SHA	MODEL	

		JOB NO.	28357
		SCALE	DATE
TITLE	2000-D-750 GAL POLY, 152" FH D5, LOW PS, SIDE CONTROL LADDERS ON SIDE, DELUGE, GENERATOR, BOOSTER REEL		DRAWN BY
FOR	LIONVILLE FIRE COMPANY LIONVILLE, PENNSYLVANIA		NPA
DWG NO.	28357AD		CHECKED BY
			SHA
			SHEET SIZE
			SHEET NO.
			1 OF 1