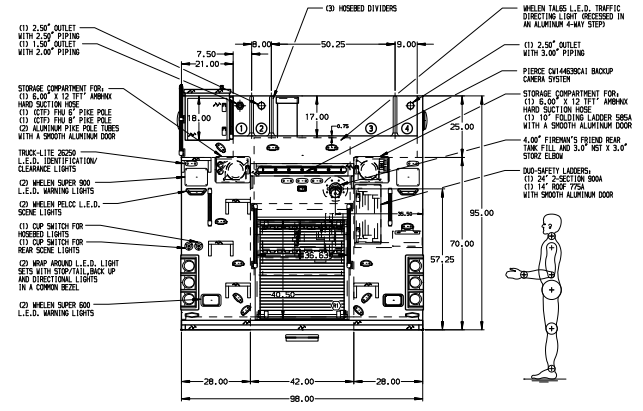
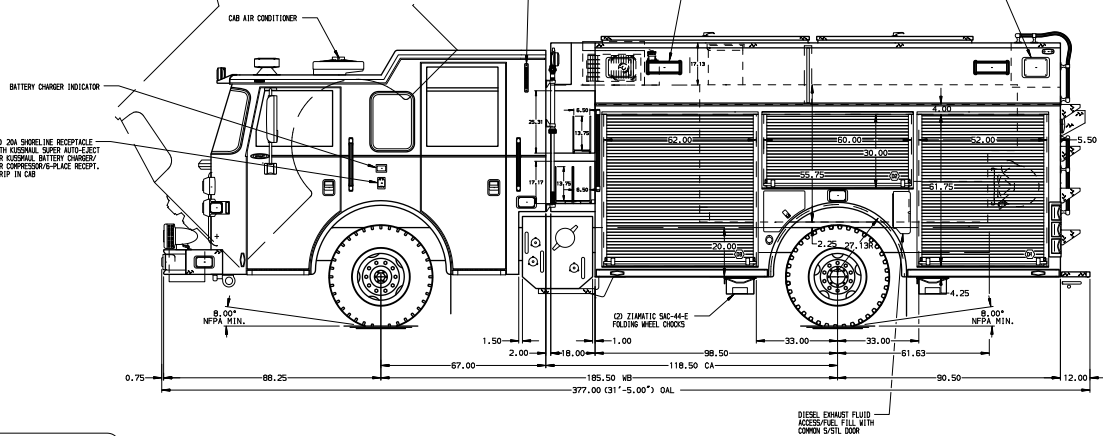


- HOSEBOX CAPACITIES**
- ① 200' OF 1.75" D.J. HOSE
  - ② 200' OF 2.50" D.J. HOSE
  - ③ 1500' OF 5.00" D.J. HOSE
  - ④ 200' OF 3.00" D.J. HOSE



**ALUMINUM BODY**

- NOTE**
1. ONSPOT AUTOMATIC TIRE CHAINS TO BE PROVIDED AT REAR
  2. RISSMANN PUMP PUMP LOW BATTERY CHARGER/AIR COMPRESSOR IN COMPARTMENT (3)
  3. PERIMETER SCENE LIGHTS LOCATED PER SHOP ORDER
  4. WHELEN L.E.D. LIGHT STRIPS IN HOSEBOX
  5. PIERCE L.E.D. COMPARTMENT DUAL LIGHT STRIPS LOCATED PER SHOP ORDER
  6. ONE SURVIVAL KIT PUMP BOMB TRIG BAND IN COMPARTMENT (2) & (2)
  7. CIRCUIT BREAKER PANEL IN COMPARTMENT (3)
  8. STAINLESS STEEL FORKED CHOCKS FRONT AND REAR
  9. PIERCE LADDERS OVERLAP FRONT AND REAR
  10. ONE 15A 100V 6-PLATE RECEPTACLE STRIP IN CAB
11. MOUNTING PROVISIONS FOR CUSTOMER INSTALLED CABLE REEL IN COMPARTMENT (1)

CUSTOMER APPROVAL				JOB NO. 27241	
APPROVED BY:				SCALE 1:1.24 DATE	
DATE:				DRAWN BY: NPA	
27MAR14	NPA	ANG	CHASSIS DATA	TITLE 1500-D-1000 GAL POLY, 189" PUC BODY, SIDE CONTROL	
28MAR14	NPA	ANG	WAKE	FOR (3) XLAYS, LADDERS THRU BODY, DELUGE, GENERATOR	
27APR14	NPA	ANG	PIERCE	FOR PINE GROVE HOSE HOOK & LADDER FIRE COMPANY #1	
18DEC13	NPA	TMG	MODEL	DNG	
RCY	DATE	BY	CH	NO. 27241 AD	
				SHEET NO. D	
				SHEET SIZE 1 of 1	