

**PASSENGER'S SIDE COMPARTMENTS CONTAIN THE FOLLOWING:**

**COMPARTMENT P1 CONTAINS:**

- (2) 22" DP ADJ. SHELF
- (1) ELECTRIC COOD REEL WITH 200' OF 10/3 BLACK CORD
- (1) 15A, 120V T.L. RECEPTACLE

**COMPARTMENT P2 CONTAINS:**

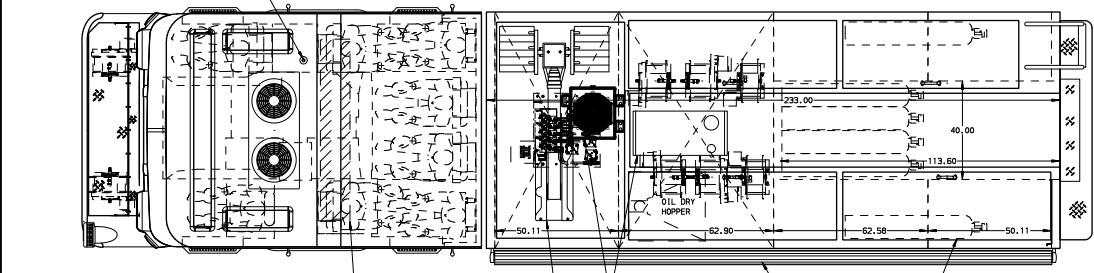
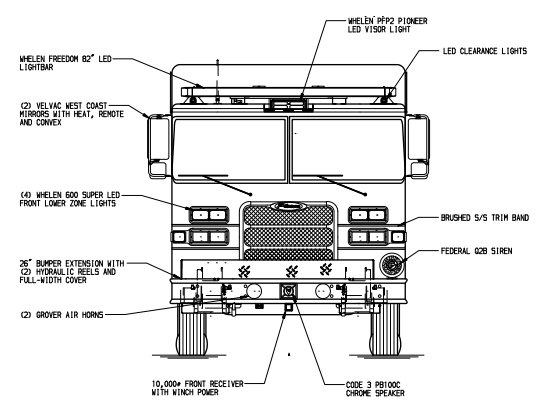
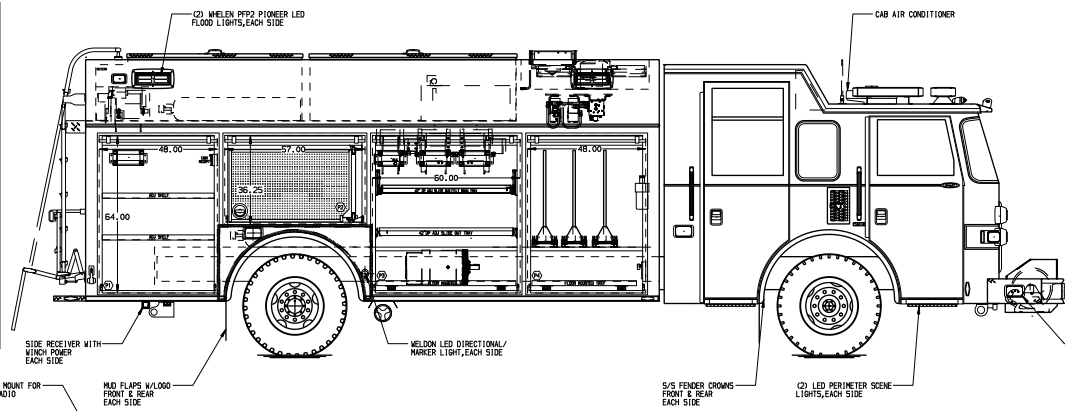
- (1) SWING-OUT TOOLBOARD

**COMPARTMENT P3 CONTAINS:**

- (1) CAB LIGHT CONTROLLER
- (1) 85" 2-WAY ADJ. SLIDE OUT TOOLBOARD
- (1) 22" DP ADJ. SLIDE OUT TOOLBOARDS
- (1) 22" DP FLOOR MOUNTED TRAY
- (1) 22" DP ADJ. SLIDE OUT/ILT TRAY
- (1) LOW PRESSURE AIR REEL W/150' OF HOSE
- (2) HYDRAULIC REELS W/100' OF DUAL HOSE

**COMPARTMENT P4 CONTAINS:**

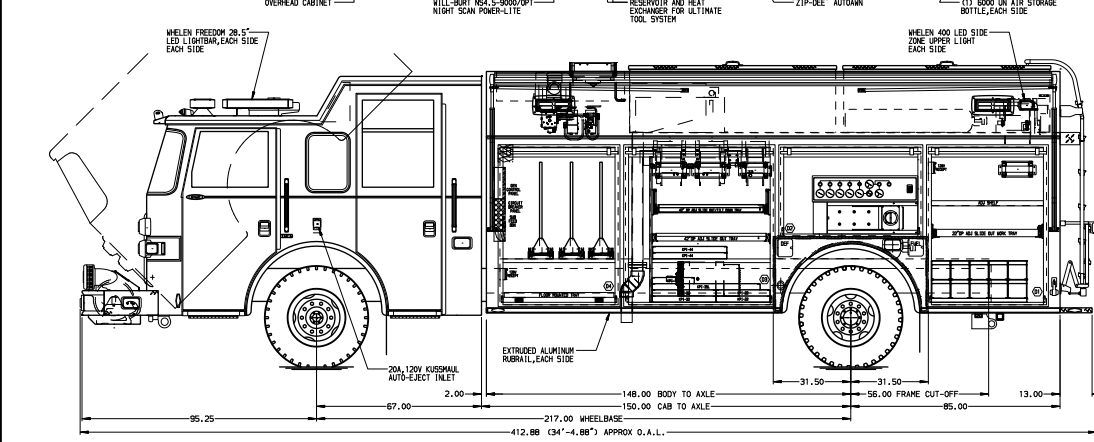
- (1) 85" 2-WAY ADJ. SLIDE OUT TOOLBOARD
- (1) 22" DP ADJ. SLIDE OUT TOOLBOARDS
- (1) 22" DP FLOOR MOUNTED TRAY
- (1) HORIZONTAL FLOOR EXTENSION FILTER FOR ULTIMATE TOOL SYSTEM SKID UNIT FOR ULTIMATE TOOL SYSTEM



**REAR COMPARTMENT CONTAINS THE FOLLOWING:**

**COMPARTMENT R1 CONTAINS:**

- (1) 90" ADJ. SHELF
- (1) 110" DP ADJ. SLIDE OUT TRAY
- (1) HORIZONTAL FLOOR EXTENSION
- (4) 6000 IN AIR STORAGE BOTTLES



**DRIVER'S SIDE COMPARTMENTS CONTAIN THE FOLLOWING:**

**COMPARTMENT D1 CONTAINS:**

- (1) 22" DP ADJ. SHELF
- (1) 22" DP ADJ. SLIDE OUT WORK TRAY
- (1) RACK FOR 10 SEMA BOTTLES
- (1) OIL DRY HORNER
- (1) RACK FOR 6 AIR BAGS
- (1) LOW PRESSURE AIR REEL W/150' OF HOSE
- (2) HYDRAULIC REELS W/100' OF DUAL HOSE
- (1) VERTICAL COMPARTMENT DIVIDER

**COMPARTMENT D2 CONTAINS:**

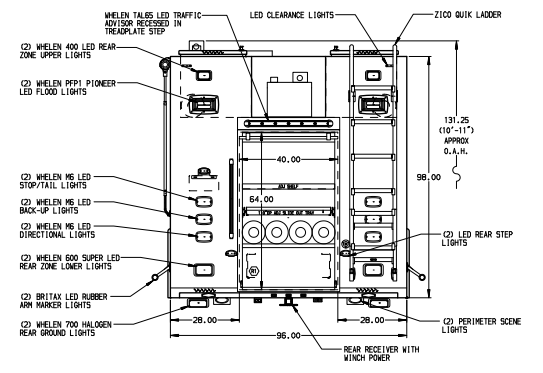
- (1) "SPACEWAY" 2-BOTTLE FULL ENCLOSURE
- (1) CASCADE SYSTEM CONTROL PANEL

**COMPARTMENT D3 CONTAINS:**

- (1) HORIZONTAL FLOOR EXTENSION
- (1) 22" DP ADJ. SLIDE OUT TRAY
- (1) 42" DP ADJ. SLIDE OUT/ILT TRAY
- (1) OIL DRY HORNER
- (1) RACK FOR 6 AIR BAGS
- (1) LOW PRESSURE AIR REEL W/150' OF HOSE
- (2) HYDRAULIC REELS W/100' OF DUAL HOSE
- (1) VERTICAL COMPARTMENT DIVIDER

**COMPARTMENT D4 CONTAINS:**

- (1) ONAN 25kW SINGLE PHASE P10 DRIVEN GENERATOR LOCATED BETWEEN THE FRAME RAILS
- (1) 85" 2-WAY ADJ. SLIDE OUT TOOLBOARD
- (1) 22" DP ADJ. SLIDE OUT TOOLBOARDS
- (1) 22" DP FLOOR MOUNTED TRAY
- (1) HORIZONTAL FLOOR EXTENSION
- (1) CIRCUIT BREAKER PANEL
- (1) SUB FEED BOX
- (1) SENSOR MONITORING UNIT
- (1) 15A, 120V T.L. RECEPTACLE
- (1) SKID UNIT FOR ULTIMATE TOOL SYSTEM



**NOTE:**

DIMENSIONS SHOWN ARE APPROXIMATE AND ARE SUBJECT TO MINOR DEVIATIONS AS MAY OCCUR OR BE NECESSARY IN CONSTRUCTION.

**NOTES:**

- ONAN 25kW SINGLE PHASE P10 DRIVEN GENERATOR LOCATED BETWEEN THE FRAME RAILS
- WASH & DRY PORTABLE WASH
- S/S SUPPLEMENTARY ON EAR FLOOR JAMS AND ON REAR OF ENGINE TUNNEL
- FLOOR IN CAB AND UNDER CAB TO BE PADDED RUBBER
- PIERCE DUAL LED COMPARTMENT LIGHTS IN BODY COMPARTMENTS
- (2) 15A, 120V T.L. RECEPTACLES LOCATED BETWEEN THE CAB AND GREEN CAB SEATS
- WIRING FOR AUTOMATIC TIRE CHAIN
- AIR INLET WITH FOSBERG REAR COMPARTMENT LOCATED IN DRIVER'S SIDE STEP WELL
- BATTERY CHARGE INDICATOR LOCATED IN DRIVER'S SIDE STEP WELL

MAXIMUM O.A.L. 35'-0"  
STAINLESS STEEL BODY

CUSTOMER APPROVAL				Pierce MANUFACTURING INC.		JOB NO.	26496
APPROVED BY:		DATE:		CHASSIS DATA		SCALE	
✓	26JAL13	EMT	ALZ	DATE	HEAVY DUTY RESCUE NON-WALKIN	SCALE	1:24
✓	18APR13	DHE	AZU	DATE	FOX TOWNSHIP FIRE DEPARTMENT	SCALE	19DEC12
✓	18FEB13	DHE	MPC	DATE	FOX TOWNSHIP, PA	SCALE	21DEC12
✓	07JAN13	ALZ	AZU	DATE	DWG NO.	26496AD	SHEET NO.
RCY	DATE	BY	CH	AXIS716			1 of 1